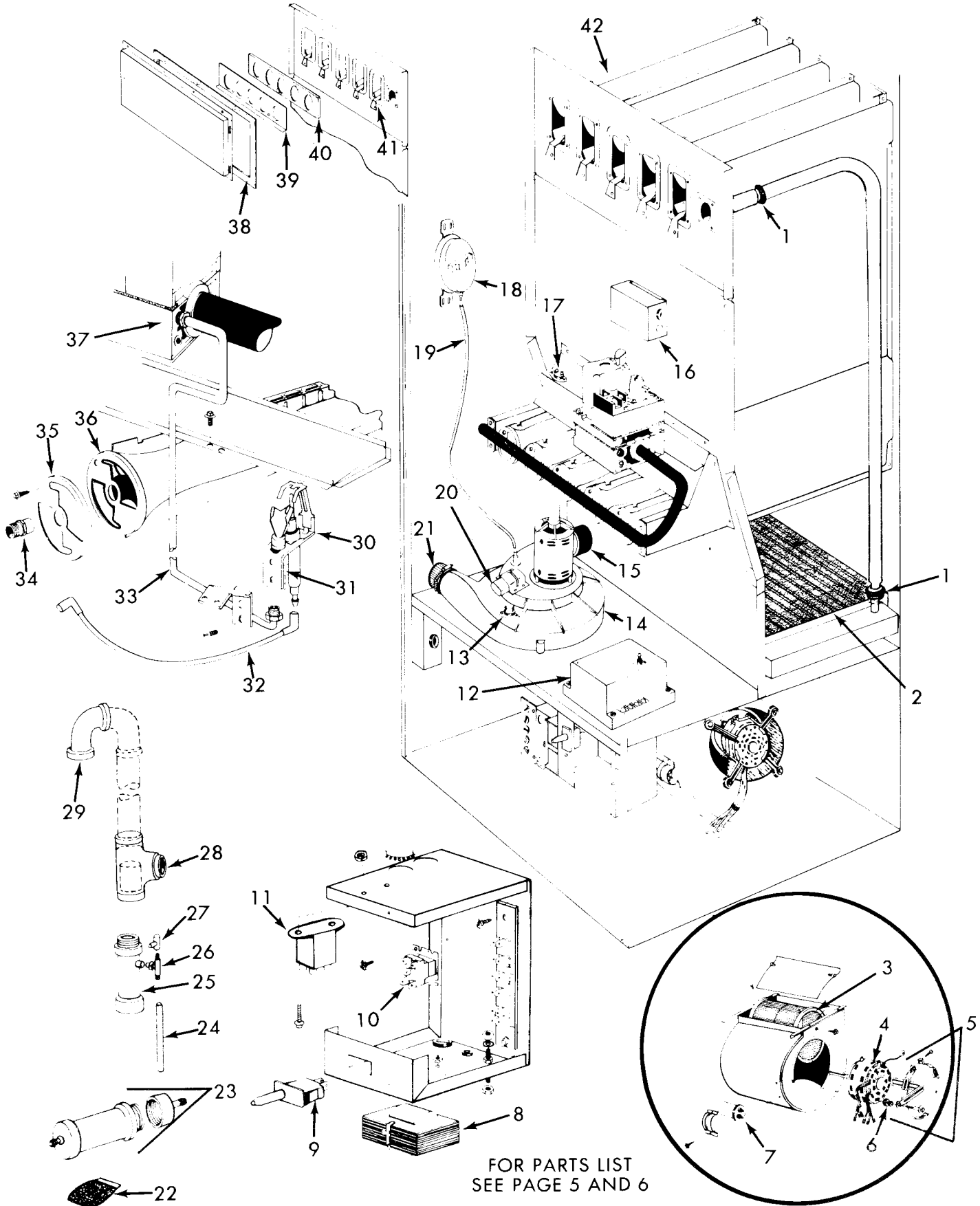


**GAS FURNACE—MODELS XH050D36AN, XH050D36AL,
XH075D42AN, XH075D42AL, XH100D48AN, XH100D48AL,
XH125D60AN AND XH125D60AL**



FOR PARTS LIST
SEE PAGE 5 AND 6

Functional Replacement Parts

REPLACEMENT PART SUPPLIED WILL BE CURRENT ACTIVE PART.
FOR PARTS NOT LISTED CONSULT PLACE OF PURCHASE.

ALL MODELS
XH050D36AN
XH050D36AL
XH075D42AN
XH075D42AL
XH100D48AN
XH100D48AL
XH125D60AN
XH125D60AL

KEY NO.	DESCRIPTION	REPLACEMENT PART NUMBER	MODEL NUMBER/QUANTITY REQUIRED																		
			ALL MODELS	XH050D36AN	XH050D36AL	XH075D42AN	XH075D42AL	XH100D48AN	XH100D48AL	XH125D60AN	XH125D60AL										
1	O-Ring	9044-182	2																		
2	Coil, Condenser	9044-238	-	1	1																
		9044-239	-	-	-	1	1														
		9044-236	-	-	-	-	-		1	1											
		9044-237	-	-	-	-	-		-	-				1	1						
3	Wheel, Blower	9044-175	-	1	1																
		9044-176	-	-	-	1	1	1	1	1	1										
		9044-177	-	-	-	-	-							1	1						
4	Motor, 1/2H.P., 4SP/PSC	9044-169	-	1	1																
	3/4H.P., 4SP/PSC	9044-170	-	-	-	1	1	1	1	1	1										
	3/4H.P., 4SP/PSC	9044-240	-	-	-	-	-							1	1						
5	Mount, Motor (Includes No. 6)	9044-168	-	1	1	1	1	1	1	1	1										
		9044-172	-	-	-	-	-							1	1						
6	Grommet, Motor Mount	9044-173	-	3	3	3	3	3	3	3	3			4	4						
7	Capacitor	8552-004	-	1	1																
	7.5MFD., 370V.,	8552-005	-	-	-	1	1	1	1	1	1										
	10MFD., 370V.,	9044-174	-	-	-	-	-							1	1						
	15MFD., 370V.,	9044-228	1																		
8	Transformer	9044-229	1																		
9	Switch, Interlock	9044-231	1																		
10	Relay, DPDT	9044-230	1																		
11	Relay, DPST	9044-215	-	1	-	1	-	1	-	1	-			1	-						
12	Module, Control (Nat. Gas)	9044-216	-	-	1	-	1	-	1	-	1			-	-						
	(L.P. Gas)	9044-224	-	1	1																
13	Switch, Limit	9044-225	-	-	-	1	1	1	1	1	1										
		9044-226	-	-	-	-	-							1	1						
14	Blower, Exhaust	9044-222	1																		
15	Coupling	9044-223	1																		
16	Control, Fan and Limit	9044-232	1																		
17	Switch, Limit	9044-217	1																		
18	Switch, Pressure	9044-243	-	1	1																
		9044-244	-	-	-	1	1														
		9044-246	-	-	-	-	-		1	1											
		9044-245	-	-	-	-	-		-	-				1	1						
19	Tube, Sensor	9044-258	1																		
20	Capacitor, 5MFD., 370V.,	8552-004	1																		
21	Coupling, No Hub Band	9044-227	1																		
22	Neutralizer (Optional)	9044-192	1																		
23	Kit, Neutralizer Tubing (Optional)	9044-193	1																		
24	Tubing, 5/8"O.D. X 1/2" I.D. (Optional)	-----																			
25	Trap	9044-194	1																		
26	Tee, 1/2" Male	9044-195	1																		
27	Tee, 1/2" Union	9044-196	1																		
28	Tee, 2" (Includes Float (1000887))	9044-197	1																		
29	Cap, Vent	9044-198	1																		
30	Burner, Pilot (Nat. Gas) With Orifice	9044-107	-	1	-	1	-	1	-	1	-			1	-						
	(L.P. Gas) With Orifice	9044-108	-	-	1	-	1	-	1	-	1			-	-						
31	Orifice, Pilot (Nat.) (.018)	9044-112	-	1	-	1	-	1	-	1	-			1	-						
	(L.P.) (.016)	9044-113	-	-	1	-	1	-	1	-	1			-	-						
32	Wire, Spark	9044-247	1																		
33	Tube, Pilot	9044-248	-	1	1	1	1														
		9044-249	-	-	-	-	-		1	1				1	1						
34	Orifice, Main Burner (Nat. Gas) (No. 42)	9044-190	-	2	-	3	-	4	-	4	-			5	-						
	(L.P. Gas) (No. 54)	9044-191	-	-	2	-	3	-	4	-	4			5	-						
35	Shutter, Air	9044-120	-	-	2	3	3		-	4	-			5	-						
36	Burner	9044-150	-	2	2	3	3	4	4	4	4			5	5						
37	Valve, Gas (Nat.)	9044-183	-	1	-	1	-	1	-	1	-			1	-						
	(L.P.)	9044-184	-	-	1	-	1	-	1	-	1			-	-						
38	Gasket, Collector Box	9044-250	-	1	1	1	1														
		9044-200	-	-	-	-	-		1	1											
		9044-201	-	-	-	-	-		-	-				1	1						
39	Plate, Restrictor	9044-251	-	1	1																
		9044-252	-	-	-	1	1														

Functional Replacement Parts

REPLACEMENT PART SUPPLIED WILL BE CURRENT ACTIVE PART.
FOR PARTS NOT LISTED CONSULT PLACE OF PURCHASE.

ALL MODELS
XH050036AN
XH050036AL
XH075042AN
XH075042AL
XH100048AN
XH100048AL
XH125060AN
XH125060AL

KEY NO.	DESCRIPTION	REPLACEMENT PART NUMBER	MODEL NUMBER/QUANTITY REQUIRED								
			XH050036AN	XH050036AL	XH075042AN	XH075042AL	XH100048AN	XH100048AL	XH125060AN	XH125060AL	
39	Plate, Restrictor	9044-253	-	-	-	-	-	1	1		
		9044-205	-	-	-	-	-	-	-	1	1
40	Gasket, Restrictor Plate	9044-206	-	1	1						
		9044-207	-	-	-	1	1				
		9044-208	-	-	-	-	-	1	1		
		9044-209	-	-	-	-	-	-	-	1	1
41	Baffle, Flue	9044-210	-	2	2	3	3	4	4	5	5
42	Exchanger, Heat	9044-254	-	1	1						
		9044-255	-	-	-	1	1				
		9044-256	-	-	-	-	-	1	1		
		9044-257	-	-	-	-	-	-	-	1	1
	Filter, Air (16" X 25" X 1")	7003-004	-	1	1	1	1	1	1		
	(24" X 25" X 1")	9044-259	-	-	-	-	-	-	-	1	1
	Manual, Installation	1000764	1								
	Manual, Homeowners	1000765	1								
	Manual, Technical Support	1002668	1								
	Warranty	F1081	1								
	PART NOT ILLUSTRATED		FOR PART ILLUSTRATION SEE PAGE 4								