

REPLACEMENT PARTS MANUAL

OIL FIRED FURNACE

MODELS: FH085D36C, FH110D48C, FH110D60C

Manual 2110-912 Revision Date 7-15-93 Supersedes

* GENERAL NOTES *

*Revised and/or additional pages may be issued from time to time.
*A complete and current manual consists of pages dated as shown in the following index.

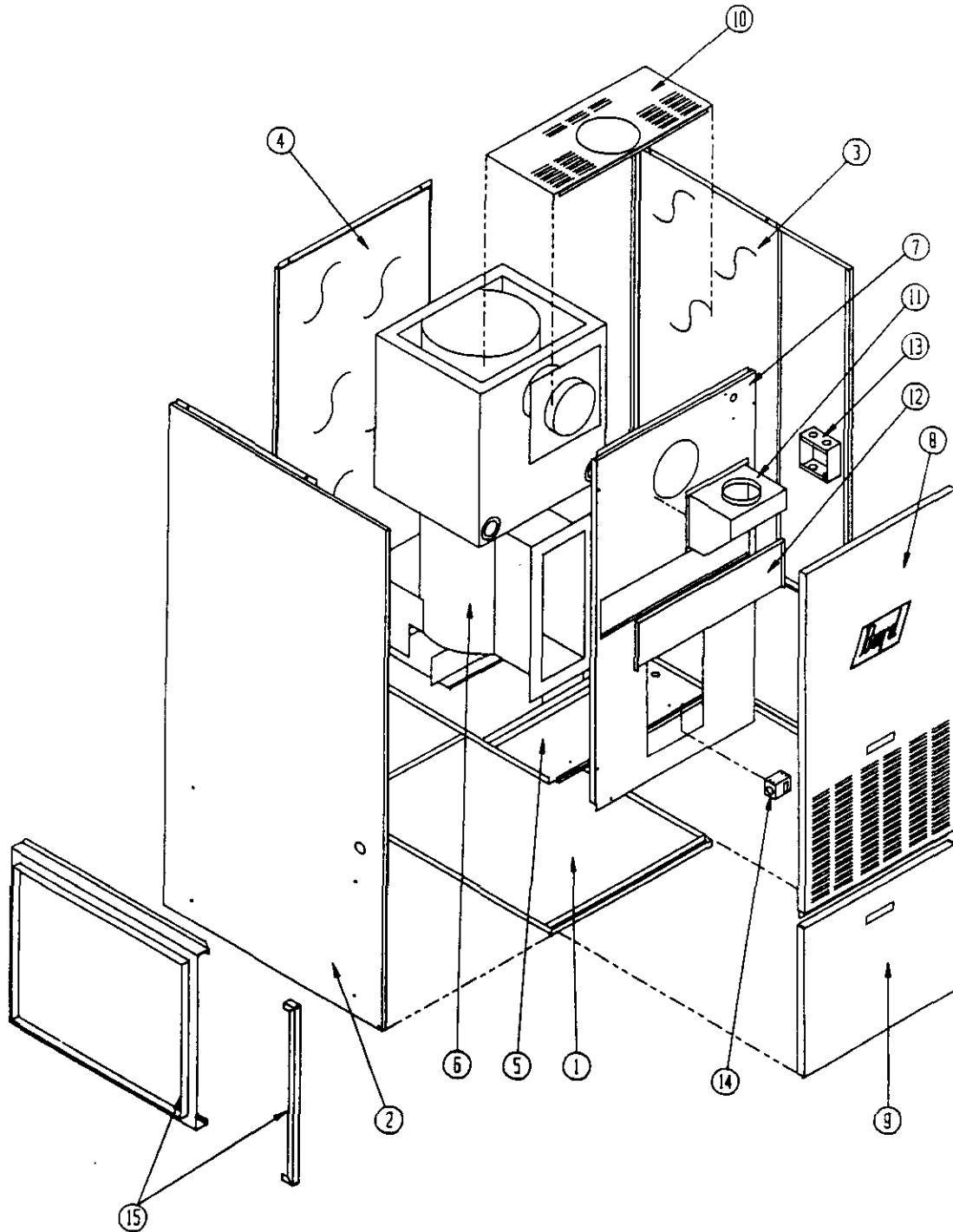
** INDEX **

<u>Page Description</u>	<u>Page</u>	<u>Date</u>	<u>Supersedes</u>
Cabinet Components--Exploded View	1	7-15-93	
" " --Usage List	2	7-15-93	
Functional Components--Exploded View	3	7-15-93	
" " --Usage List	4	7-15-93	
Burner Components--Layout	5	7-15-93	
" " --Usage List	6	7-15-93	
Burner/Combustion Chamber Mounting System--Layout	7	7-15-93	
" " " " " --Usage	8	7-15-93	

*** IMPORTANT ***

Contact the installing and/or local Bard distributor for all parts requirements. Make sure you have the complete model and serial number available from the unit rating plate.

CABINET COMPONENTS



Date: 7-15-93
Supersedes:

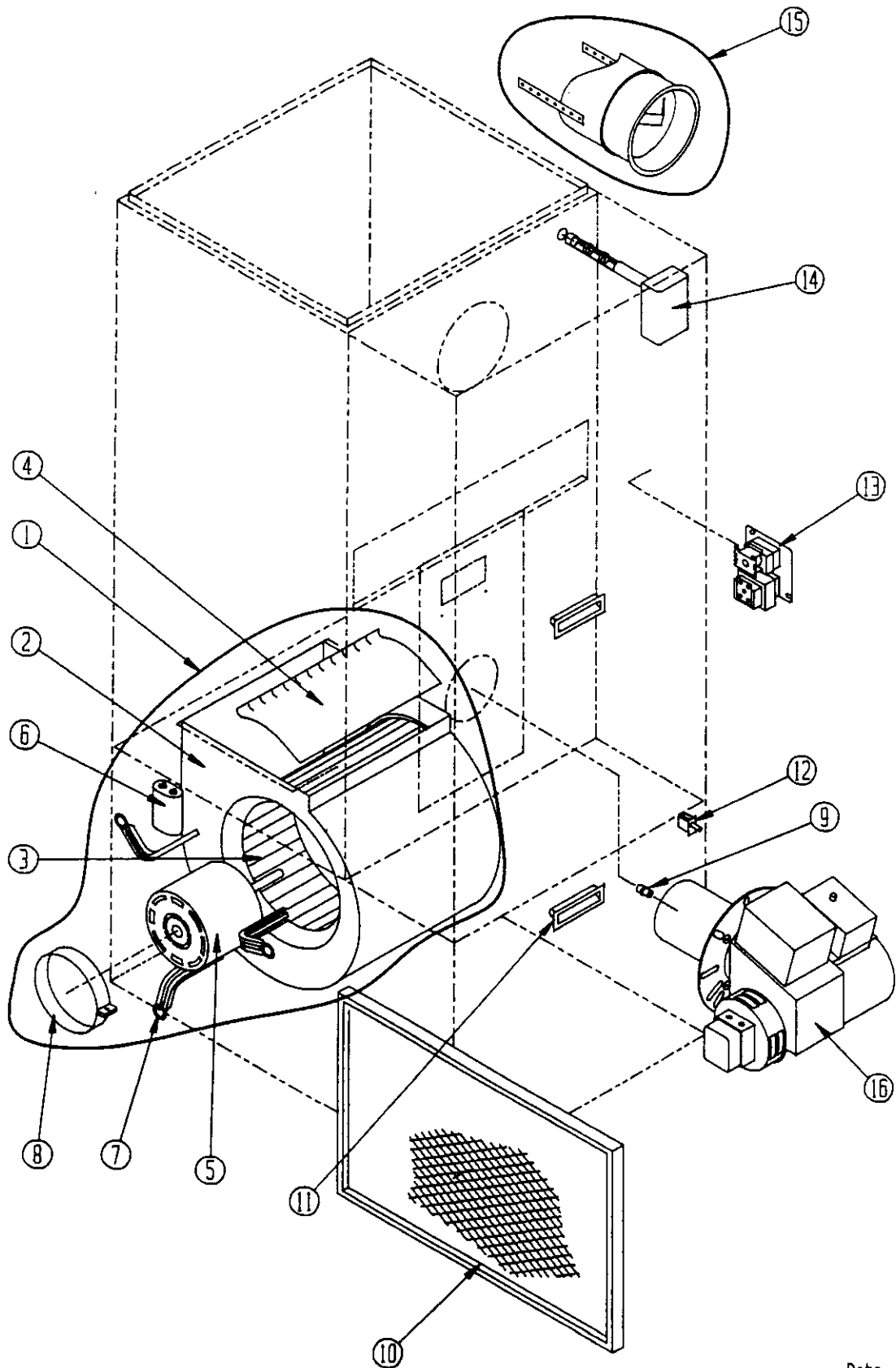
2110-912
Page: 1

CABINET COMPONENTS

Dwg. No.	Part No.	Description	F	F	F
			R	R	R
			O	I	I
			8	1	1
			5	0	0
			D	D	D
			3	4	6
			6	8	0
			C	C	C
1	127-174	Lower Base	X	X	X
2	S501-239	Left Side (Furnace serial number required)		X	X
2	S501-237	Left Side (Furnace serial number required)	X		
3	S501-238	Right Side		X	X
3	S501-236	Right Side	X		
4	508-077	Back Assembly	X		
4	508-076	Back Assembly		X	X
5	127-224	Blower Base	X		
5	127-225	Blower Base		X	X
6	171-208	Heat Exchanger Assembly	X		
6	171-209	Heat Exchanger Assembly		X	X
7	S520-224	Burner Partition	X		
7	S520-225	Burner Partition		X	X
8	S152-180	Burner Door	X		
8	S152-176	Burner Door		X	X
9	S152-155	Blower Door	X	X	X
10	106-138	Top Fill	X	X	X
11	913-0069	Flue Box Assembly	X	X	X
12	542-037	Cleanout Cover Plate	X	X	X
13	116-157	Junction Box	X	X	X
14	112-031	Door Switch Bracket	X	X	X
15	919-0002	Filter Rack W/Door	X	X	
15	919-0003	Filter Rack W/Door			X

Date: 7-15-93
Supersedes:

FUNCTIONAL COMPONENTS



Date: 7-15-93
Supersedes:

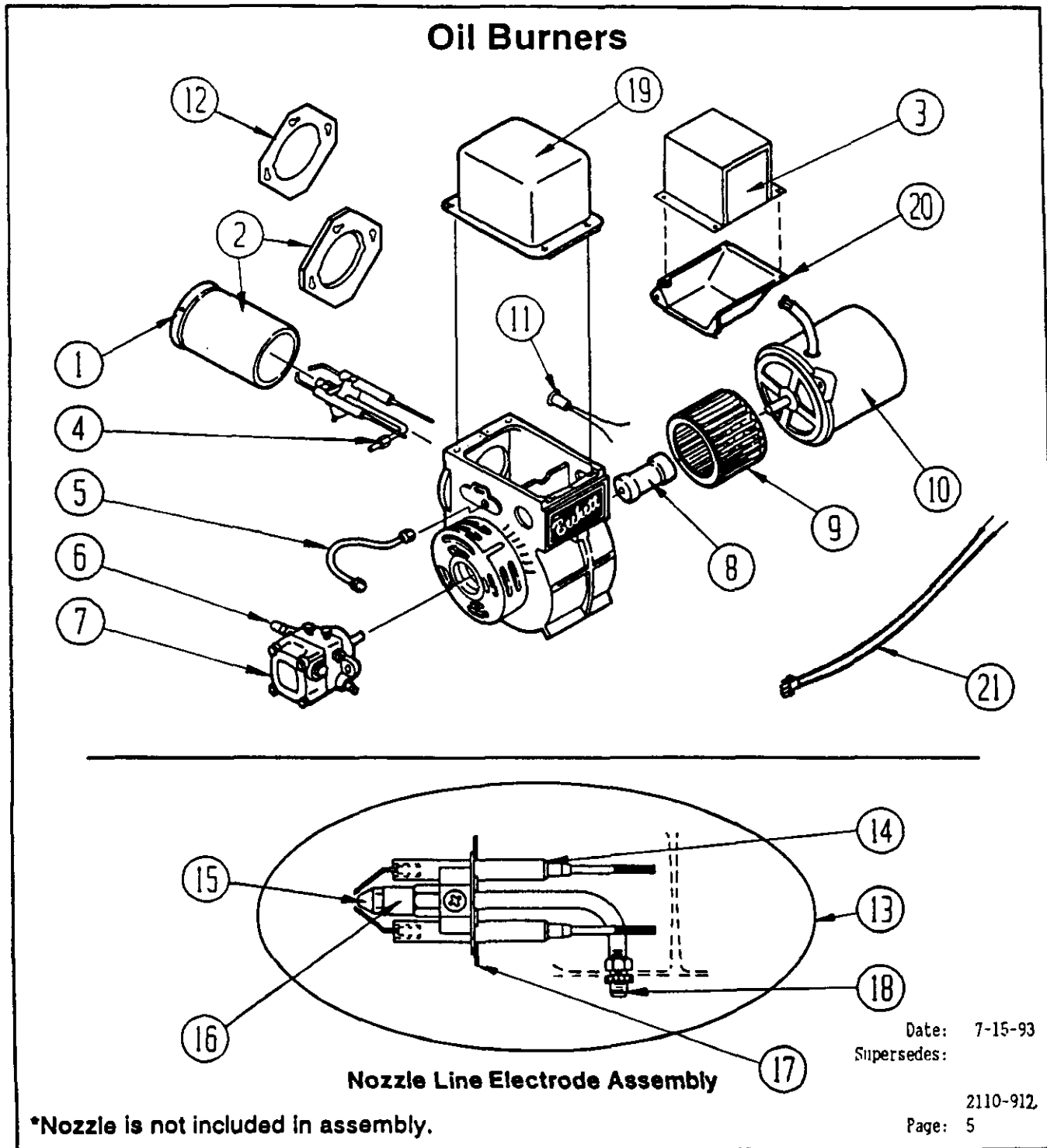
FUNCTIONAL COMPONENTS

Dwg. No.	Part No.	Description	F H O 8 5 D 3 6 C	F H I 1 O D 4 8 C	F H I 1 O D 6 O C
1	900-193	Blower Assembly	X		
1	900-194	Blower Assembly		X	
1	900-195	Blower Assembly			X
2	144-1	Blower Housing Assembly	X		
2	144-1	Blower Housing Assembly		X	
2	5152-	Blower Housing Assembly (1)			X
3	5152-013	Blower Wheel	X		
3	5152-053	Blower Wheel			X
3	5152-059	Blower Wheel		X	
4	144-127	Diffuser	X		
4	144-129	Diffuser		X	
4	NA	Diffuser (1)			X
5	8105-041	Motor 1/3 HP	X		
5	8106-033	Motor 1/2 HP		X	
5	8107-007	Motor 3/4 HP			X
6	8552-002	Capacitor 5/370 MFD	X		
6	8552-004	Capacitor 7-1/2 /370 MFD		X	
6	8552-026	Capacitor 15/370 MFD			X
7	8200-034	Motor Mount Arm	3	3	
7	8200-035	Motor Mount Arm			3
8	8200-033	Motor Mount Band	X	X	X
9	9011-001	Nozzle .75 GPH 80 degree	X		
9	9011-003	Nozzle 1.00 GPH 80 degree		X	X
10	7003-004	Permanent Filter 16x25x1	X	X	
10	7003-028	Permanent Filter 20x25x1			X
11	1171-025	Door Pull	1	1	1
12	8406-047	Door Switch	X	X	X
13	8201-006	Fan Center--Two Speed	X	X	X
14	S912-044	Fan/Limit Control	X	X	X
15	8601-031	Barometric Damper	X	X	X
16	901-0106	Burner Assembly (Includes nozzle part No. 9011-001)	X		
16	901-0107	Burner Assembly (Includes nozzle part No. 9011-003)		X	X
	4047-112	Wire Diagram	X	X	X

(1) Drawing No. 2 part No. 5152-050 includes housing, diffuser, and blower wheel part No. 5152-053.

Date: 7-15-93
Supersedes:

Burner Replacement Parts



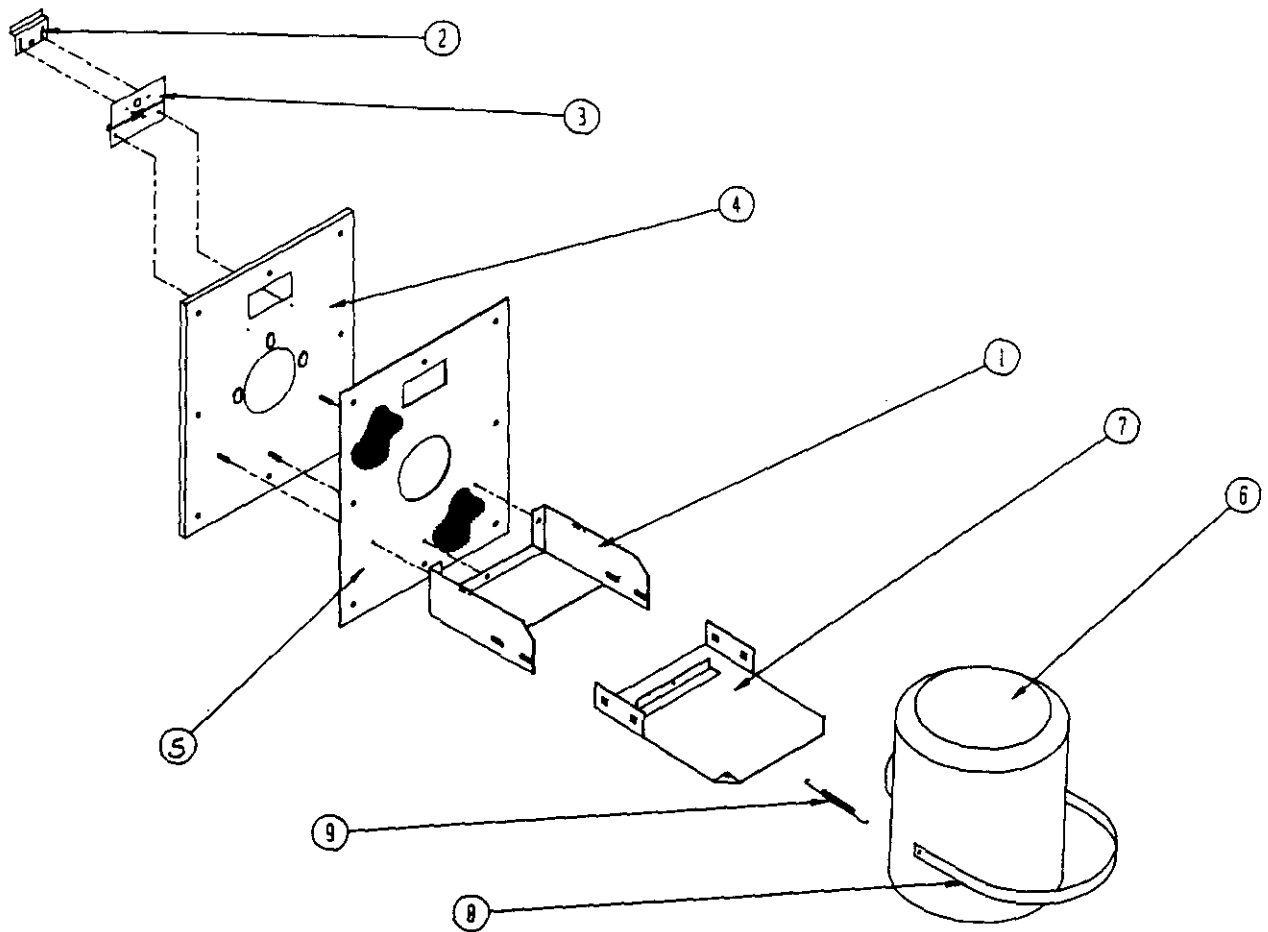
BURNER COMPONENTS

Dwg. No.	Bard Part No.	Supplier Part No.	Description	F H O 8 5 D 3 6 C	F H 1 1 0 D 4 8 C	F H 1 1 0 D 6 0 C
1	9022-003	F3	Head	X	X	X
2	9022-004	51236007BK	Air Tube and Flange Assembly 7-5/8" Insertion	X	X	X
3	9022-056	7022U	Primary Control	X	X	X
4	9022-007	571801	Bulkhead Fitting	X	X	X
5	9022-008	5636	Connector Tube	X	X	X
6	9022-009	2256	Pump Outlet Elbow	X	X	X
7	9022-010	2460U	Pump, Single Stage	X	X	X
8	9022-011	2454	Coupling	X	X	X
9	9022-012	2459U	Blower	X	X	X
10	9022-013	2456U	Motor 1/7 HP 3450 RPM	X	X	X
11	9022-054	7006U	Cad Cell	X	X	X
12	9022-021	3811	Mounting Flange Gasket	X	X	X
13	9022-014	NL90YH	Nozzle Line Electrode Assembly	X	X	X
14	9022-017	5780	Electrode Insulator Assembly	X	X	X
15	9011-001		Nozzle .75 GPH 80 degree A	X		
15	9011-003		Nozzle 1.00 GPH 80 degree A		X	X
16	9022-016	213U	Nozzle Adapter, Single	X	X	X
17	9022-023	3384P	Static Plate 3-3/8"	X	X	X
18	9022-018	3666	Bulkhead Fitting Locknut	X	X	X
19	9022-057	2442U	Ignition Transformer	X	X	X
20	9022-058	5770	Electrical Box Kit	X	X	X
21	9022-055	31838	Power Cord	X	X	X

* Includes 9022-040 cad cell eye.

Date: 7-15-93
Supersedes:

BURNER/COMBUSTION CHAMBER MOUNTING SYSTEM



Date: 7-15-93
Supersedes:

BURNER/COMBUSTION CHAMBER MOUNTING SYSTEM

Dwg. No.	Bard Part No.	Description	F	F	F
			H	H	H
			0	1	1
			8	1	1
			5	0	0
			D	D	D
			3	4	6
			6	8	0
			C	C	C
1	S112-159	Combustion Chamber Bracket	X	X	X
2	142-026	Inspection Door Cover Plate	X	X	X
3	142-027	Inspection Door Hinge	X	X	X
4	161-033	Front Plate Assenbly	X	X	X
5	1921-026	Front Plate Gasket	X	X	X
6	7090-005	Combustion Chamber	X	X	X
7	112-160	Bracket Extension	X	X	X
8	140-198	Combustion Chamber Support	X	X	X
9	5401-004	Stainless Steel Spring	X	X	X

Date: 7-15-93
Supersedes:

