
REPLACEMENT PARTS MANUAL

OIL FIRED FURNACE

Models: **FH085D36C**
FH110D48C
FH110D60C

General Notes

- Revised and/or additional pages may be issued from time to time.
- A complete and current manual consists of pages shown in the following contents section.

Important

- Contact the installing and/or local Bard distributor for all parts requirements. Make sure you have the complete model and serial number available from the unit rating plate.

Contents

Description	Page
Cabinet Components	
♦ Exploded View	1
♦ Usage List	2
Functional Components	
♦ Exploded View	3
♦ Usage List	4
Burner Components	
♦ Layout View	5
♦ Usage List	6
Burner / Combustion Chamber Mounting System	
♦ Layout View	7
♦ Usage List	8



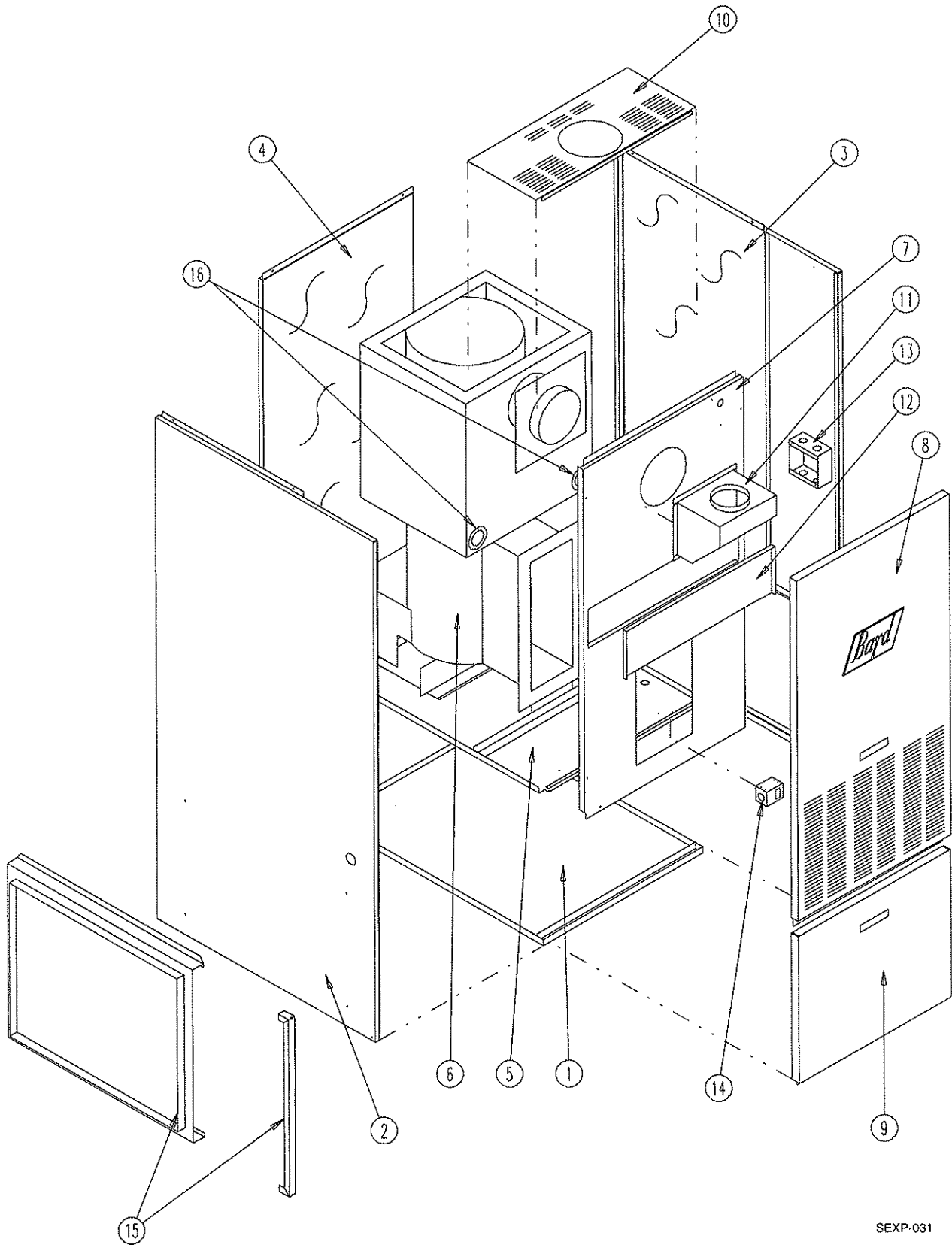
BARD MANUFACTURING COMPANY
Bryan, Ohio 43506

Since 1914...Moving ahead, just as planned.

Manual: 2110-912C
Supersedes: Rev. B
File:
Date: 12-11-98

© Copyright 1998

CABINET COMPONENTS

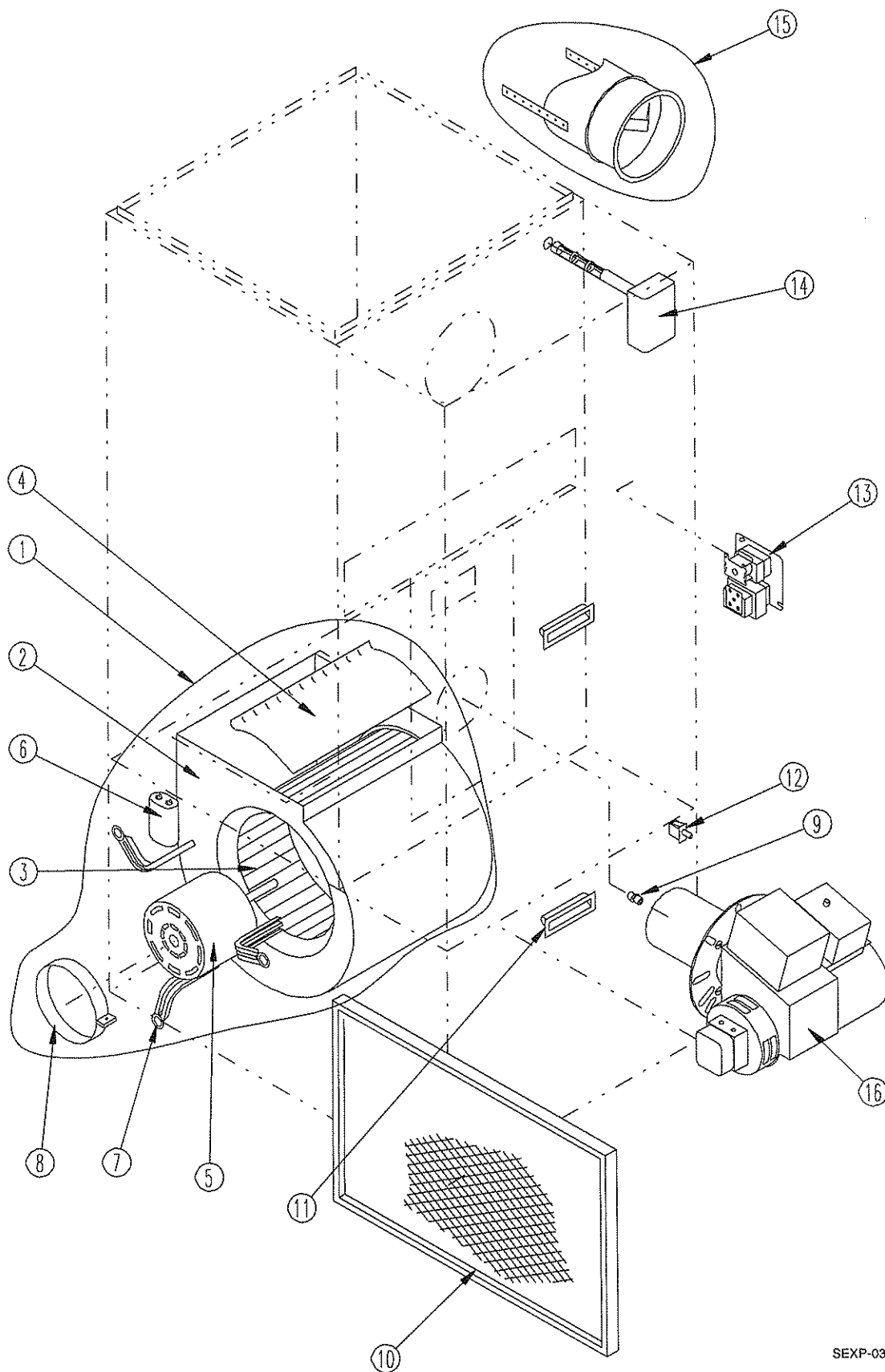


SEXP-031

CABINET COMPONENTS

Dwg. No.	Part No.	Description	FH085D36C	FH110D48C	FH110D60C
1	127-174	Lower Base	X	X	X
2	S501-239	Left Side (Furnace serial number required)	X	X	X
2	S501-237	Left Side (Furnace serial number required)	X		
3	S501-238	Right Side		X	X
3	S501-236	Right Side	X		
4	508-077	Back Assembly	X		
4	508-076	Back Assembly		X	X
5	127-224	Blower Base	X		
5	127-225	Blower Base		X	X
6	S171-208	Heat Exchanger Assembly	X		
6	S171-209	Heat Exchanger Assembly		X	X
7	S520-224	Burner Partition	X		
7	S520-225	Burner Partition		X	X
8	S152-180	Burner Door	X		
8	S152-176	Burner Door		X	X
9	S152-155	Blower Door	X	X	X
10	106-138	Top Fill	X	X	X
11	913-0069	Flue Box Assembly	X	X	X
12	542-037	Cleanout Cover Plate	X	X	X
13	116-157	Junction Box	X	X	X
14	112-031	Door Switch Bracket	X	X	X
15	919-0002	Filter Rack w/Door	X	X	
15	919-0003	Filter Rack w/Door			X
16	8620-007	Cleanout Plug and Gasket	2	2	2
16	1921-038	Cleanout Gasket Only	2	2	2

FUNCTIONAL COMPONENTS



SEXP-032

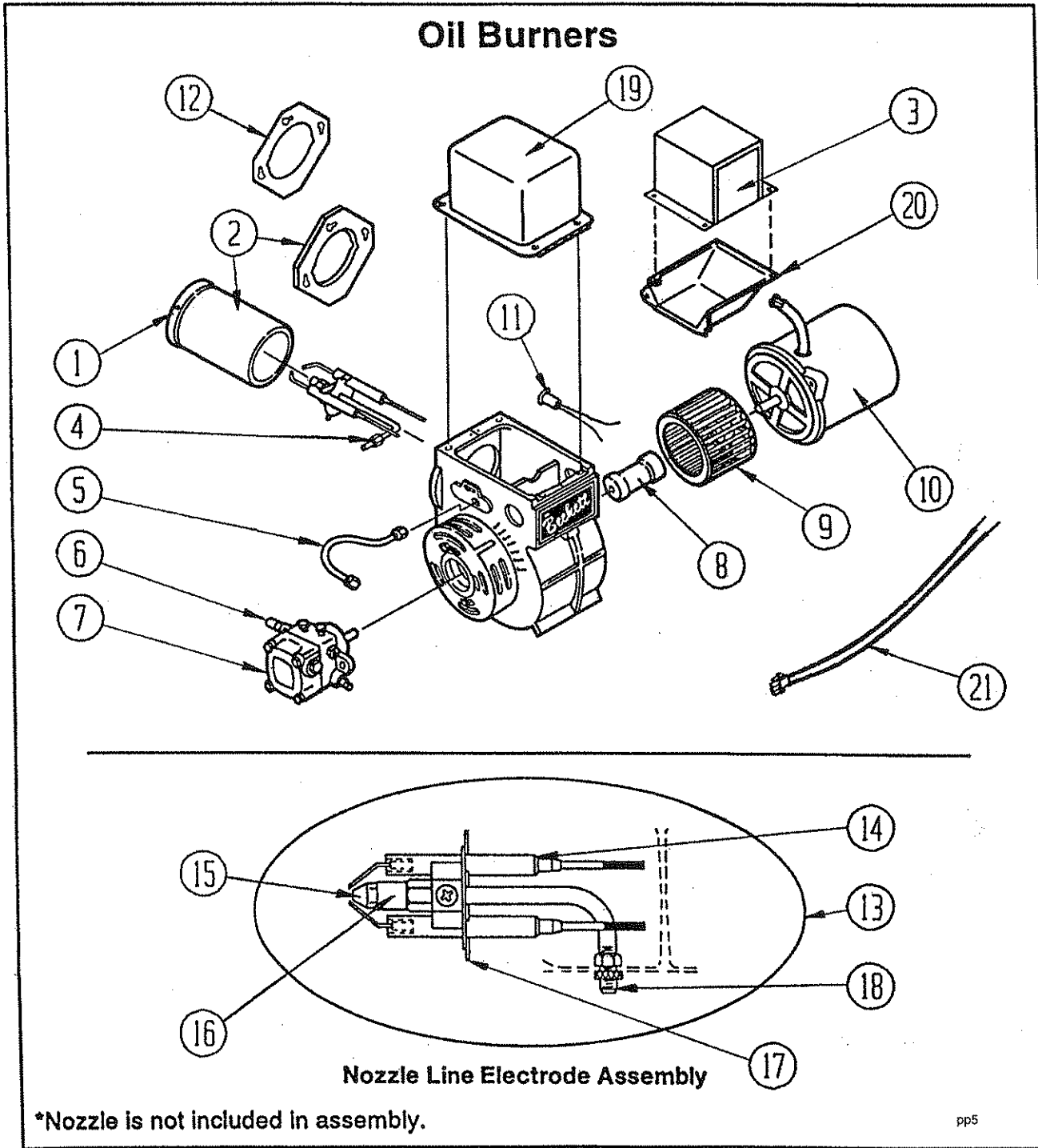
FUNCTIONAL COMPONENTS

Dwg. No.	Part No.	Description	FH085D36C	FH110D48C	FH110D60C
1	900-193	Blower Assembly	X		
1	900-194	Blower Assembly		X	
1	900-195	Blower Assembly			X
2	151-085	Blower Housing Assembly	X		
2	151-082	Blower Housing Assembly		X	
2	5152-050 ①	Blower Housing Assembly			X
3	5152-013	Blower Wheel	X		
3	5152-053	Blower Wheel			X
3	5152-059	Blower Wheel		X	
4	144-127	Diffuser	X		
4	144-129	Diffuser		X	
4	N/A ①	Diffuser			X
5	8105-041	Motor 1/3 HP	X		
5	8106-033	Motor 1/2 HP		X	
5	8107-007	Motor 3/4 HP			X
6	8552-002	Capacitor 5/370 MFD	X		
6	8552-004	Capacitor 7-1/2 /370 MFD		X	
6	8552-026	Capacitor 15/370 MFD			X
7	8200-034	Motor Mount Arm	3	3	
7	8200-035	Motor Mount Arm			3
8	8200-033	Motor Mount Band	X	X	X
9	9011-001	Nozzle .75 GPH 80 degree	X		
9	9011-003	Nozzle 1.00 GPH 80 degree		X	X
10	7003-004	Washable Filter 16 x 25 x 1	X	X	
10	7003-028	Washable Filter 20 x 25 x 1			X
11	1171-025	Door Pull	1	1	1
12	8406-047	Door Switch	X	X	X
13	8201-006	Fan Center - Two Speed	X	X	X
14	8620-081	Fan / Limit Control	X	X	X
15	8601-031	Barometric Damper	X	X	X
16	901-0106	Burner Assembly (Includes nozzle part no. 9011-001)	X		
16	901-0107	Burner Assembly (Includes nozzle part no. 9011-003)		X	X
NS	4047-112	Wire Diagram	X	X	X

① Drawing no. 2 part no. 5152-050 includes housing, diffuser, and blower wheel part no. 5152-053

NS Not Shown

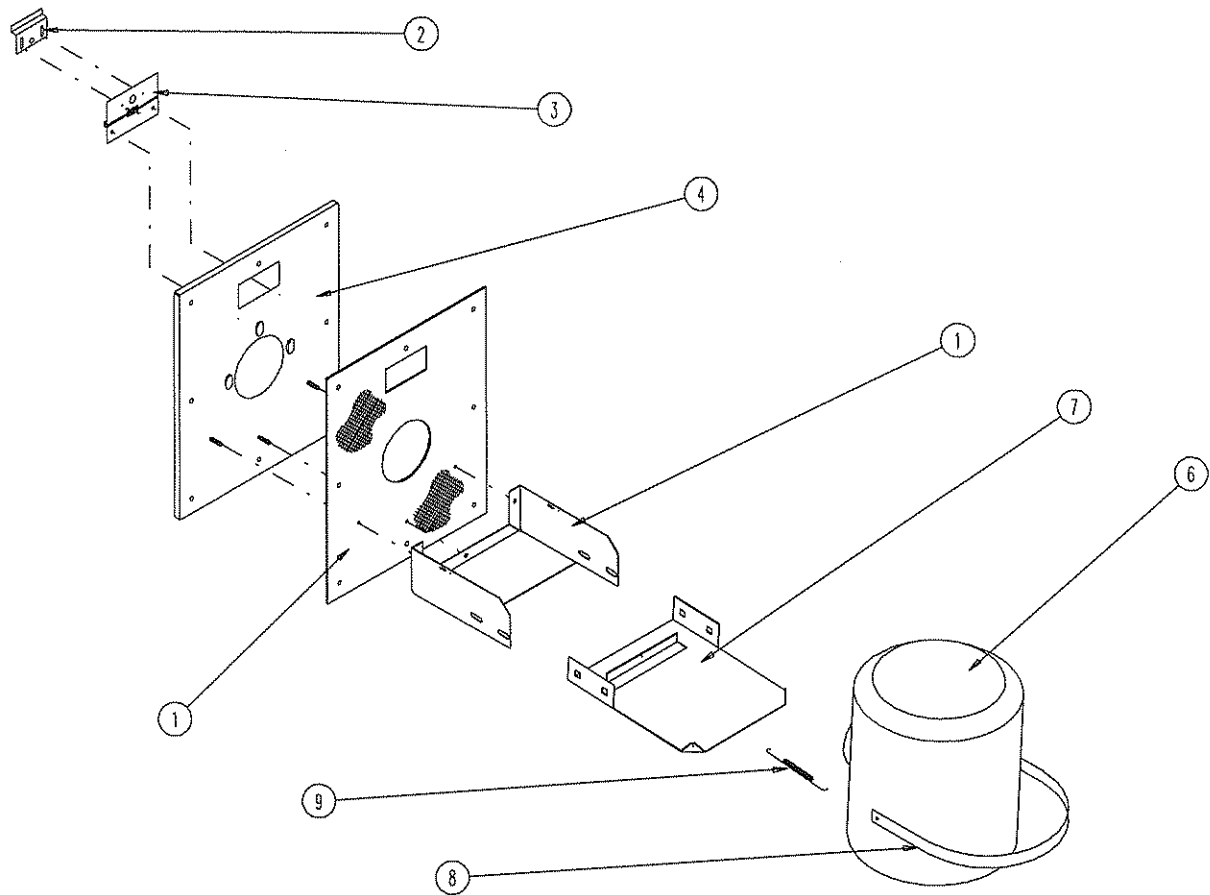
Burner Replacement Parts



BURNER COMPONENTS

Drawing No.	Bard Part No.	Supplier Part No.	Description	FH085D36C	FH110D48C	FH110D60C
1	9022-003	F3	Head	X	X	X
2	9022-004	51236007BK	Air Tube and Flange Assembly 7-5/8" Insertion	X	X	X
3	9022-056	7022U	Primary Control	X	X	X
4	9022-007	571801	Bulkhead Fitting	X	X	X
5	9022-008	5636	Connector Tube	X	X	X
6	9022-009	2256	Pump Outlet Elbow	X	X	X
7	9022-010	2460U	Pump, Single Stage	X	X	X
8	9022-011	2454	Coupling	X	X	X
9	9022-012	2459U	Blower	X	X	X
10	9022-013	2456U	Motor 1/7 HP 3450 RPM	X	X	X
11	9022-054	7006U	Cad Cell	X	X	X
12	9022-021	3811	Mounting Flange Gasket	X	X	X
13	9022-014	NL90YH	Nozzle Line Electrode Assembly	X	X	X
14	9022-017	5780	Electrode Insulator Assembly	X	X	X
15	9011-001		Nozzle .75 GPH 80 degree A	X		
15	9011-003		Nozzle 1.00 GPH 80 degree A		X	X
16	9022-016	213U	Nozzle Adapter Single	X	X	X
17	9022-023	3384P	Static Plate 3-3/8"	X	X	X
18	9022-018	3666	Bulkhead Fitting Locknut	X	X	X
19	9022-057	2442U	Ignition Transformer	X	X	X
20	9022-058	5770	Electrical Box Kit	X	X	X
21	9022-055	31838	Power Cord	X	X	X

BURNER/COMBUSTION CHAMBER MOUNTING SYSTEM



SEXP-197

BURNER/COMBUSTION CHAMBER MOUNTING SYSTEM

Dwg. No.	Part No.	Description	FH085D36C	FH110D48C	FH110D60C
1	112-159	Combustion Chamber Bracket	X	X	X
2	142-026	Inspection Door Cover Plate	X	X	X
3	142-027	Inspection Door Hinge	X	X	X
4	161-033	Front Plate Assembly	X	X	X
5	1921-026	Front Plate Gasket	X	X	X
6	7090-005	Combustion Chamber	X	X	X
7	S112-160	Bracket Extension	X	X	X
8	140-198	Combustion Chamber Support	X	X	X
9	5401-004	Stainless Steel Spring	X	X	X
	S173-076	Complete Assembly of All Parts	X	X	X