

REPLACEMENT PARTS MANUAL

OIL FIRED FURNACE MODELS FL110D48B

Manual 2110-902

Revision A

Date 9-18-89

Supersedes 9-08-89

* GENERAL NOTES *

*Revised and/or additional pages may be issued from time to time.
*A complete and current manual consists of pages dated as shown in the following index.

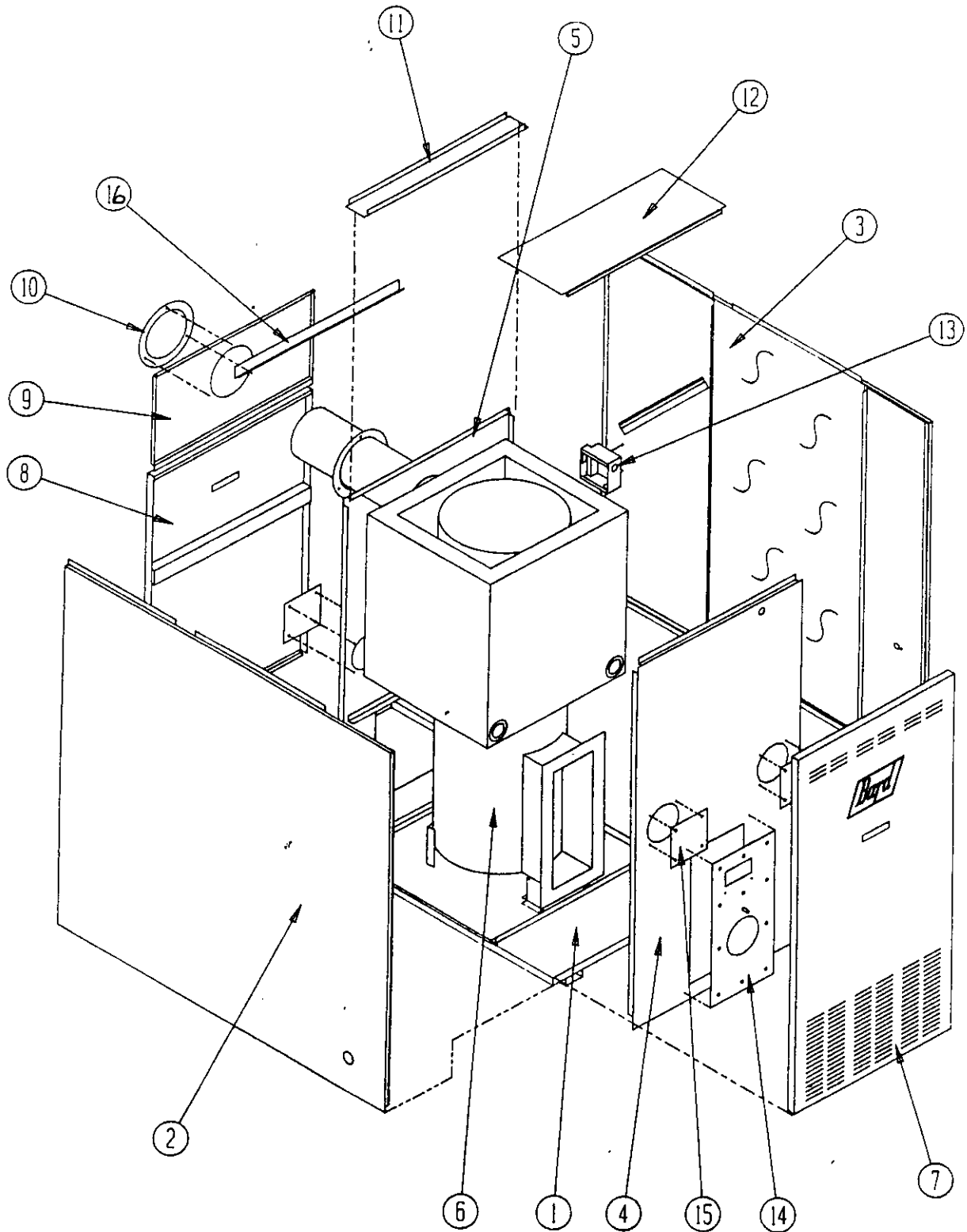
** INDEX **

<u>Page Description</u>	<u>Page</u>	<u>Date</u>	<u>Supersedes</u>
Cabinet Components--Exploded View	1	9-08-89	
" " --Usage List	2	9-18-89	9-08-89
Functional Components--Exploded View	3	9-08-89	
" " --Usage List	4	9-08-89	
Burner Components--Layout	5	9-08-89	
" " --Usage List	6	9-08-89	

*** IMPORTANT ***

Contact the installing and/or local Bard distributor for all parts requirements. Make sure you have the complete model and serial number available from the unit rating plate.

CABINET COMPONENTS



Date: 9-08-89
Supersedes:

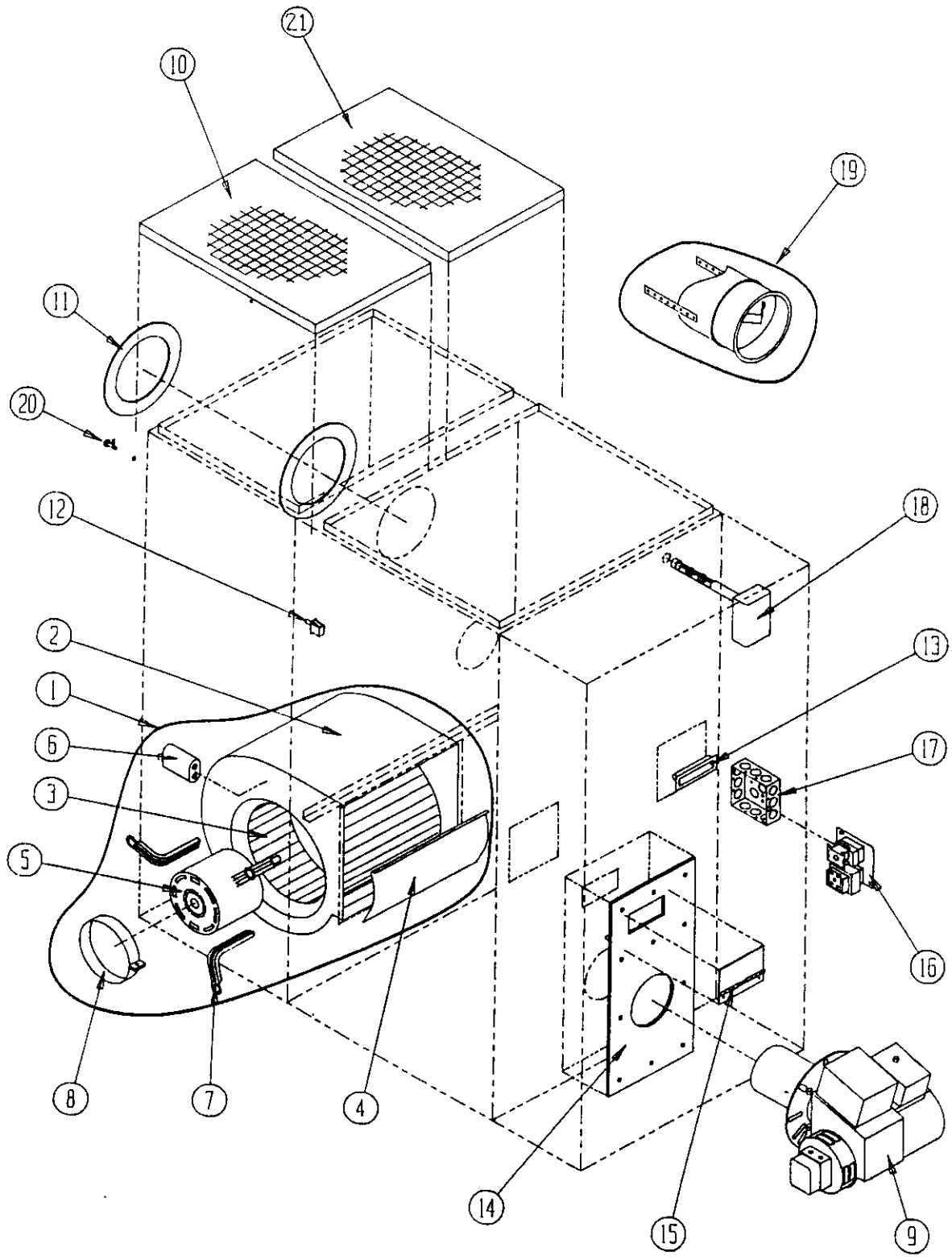
CABINET COMPONENTS

Dwg. No.	Part No.	Description	FL110D48B
1	127-152	Base	X
2	501-171	Left Side	X
3	501-191	Right Side	X
4	520-134	Burner Partition	X
5	121-135	Blower Partition	X
6	171-114	Heat Exchanger (Includes combustion chamber part No. 7090-005) (1)	X
7	152-129	Burner Door	X
8	552-158	Blower Door	X
9	108-022	Upper Back	X
10	166-007	Smoke Pipe Collar 6"	X
11	164-511	Top Channel	X
12	106-044	Top Fill	X
13	116-084	Rear Junction Box	X
14	161-001	Front Plate	X
15	542-024	Cleanout Cover Plate	4
16	130-029	Filter Seal	X

(1) Combustion chamber part No. 7090-005 may be ordered separately.

Date: 9-18-89
Supersedes: 9-08-89

FUNCTIONAL COMPONENTS



Date: 9-08-89
Supersedes:

FUNCTIONAL COMPONENTS

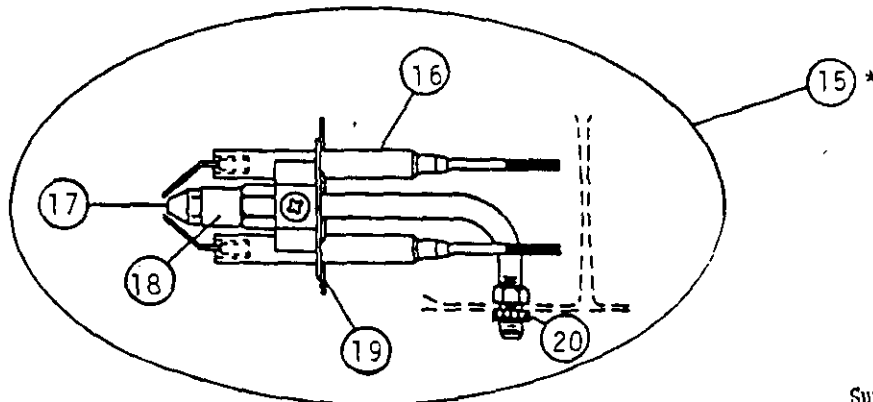
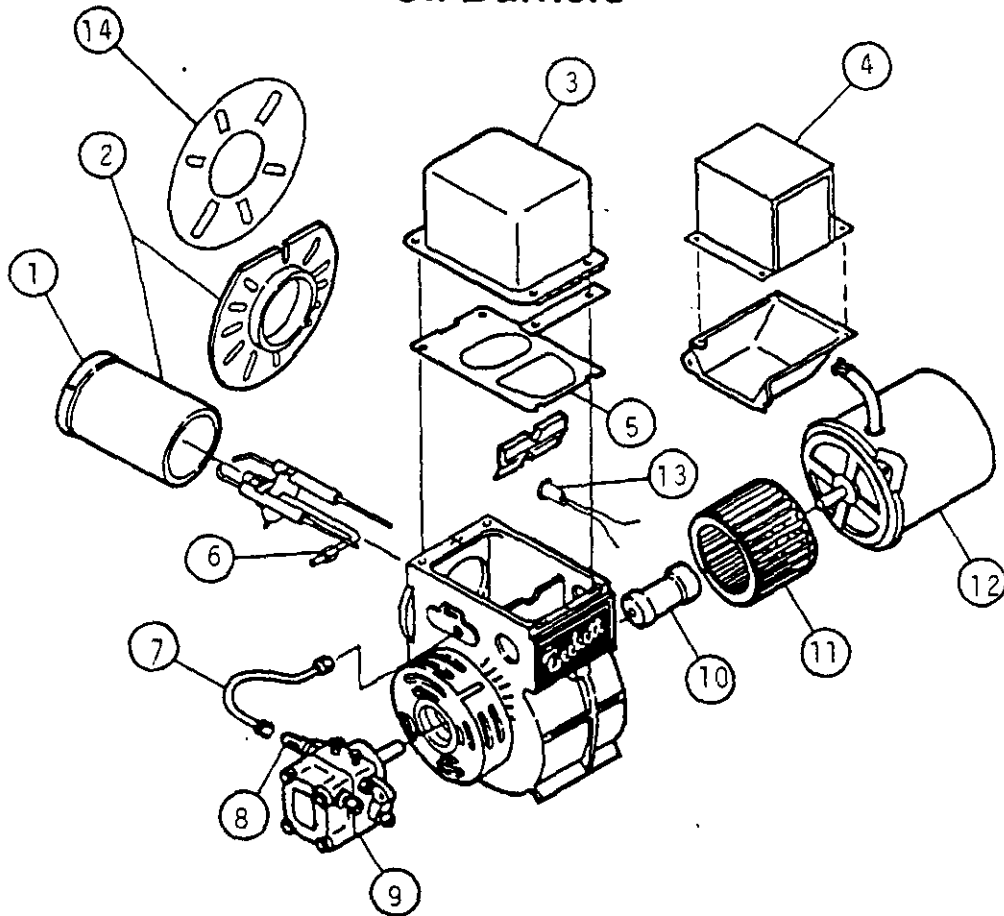
Dwg. No.	Part No.	Description	FL110D48B
1	900-144	Blower Assenbly	X
2	151-074	Blower Housing Assenbly	X
3	5152-059	Blower Wheel	X
4	144-129	Diffuser	X
5	8106-018	Motor 1/2 HP	X
6	8552-004	Capacitor 7.5/370	X
7	8200-034	Motor Mount Arm	3
8	8200-033	Motor Mount Band	X
9	9020-018	Burner Assenbly	X
10	7003-016	Permanent Filter 13x20x1	2
11	1921-006	Smoke Collar Gasket	X
12	8406-013	Door Switch	X
13	1171-025	Door Pull	X
14	1921-010	Front Plate Gasket	X
15	5400-003	Inspection Door Hinge	X
16	8201-006	Fan Center	X
17	8614-001	Front Junction Box	X
18	912-0033	Fan and Limit Assenbly	X
19	8601-031	Barometric Damper	X
20	1171-012	Cabinet Latch	X
21	7003-009	Perm. Filter 12x20x1	X

*Oil nozzle part No. 9011-003 not shown

Date: 9-08-89
Supersedes:

Burner Replacement Parts

Oil Burners



Nozzle Line Electrode Assembly

*Nozzle is not included in assembly.

Date: 9-08-89
Supersedes:

2110-902
Page 5

BURNER COMPONENTS

Dwg. No.	Part No.	Beckett Part No.	Description	FL110D48B
1	9022-003	F3	Head	X
2	9022-019	58196BK	Air Tube and Flange Assembly 7-1/4"	X
3	9022-022	5878U	Transformer w/Gasket AFG	X
4	9022-005	7296U	Primary Control	X
5	9022-006	31405	Transformer Gasket	X
6	9022-007	571801	Bulkhead Fitting	X
7	9022-008	5636	Connector Tube	X
8	9022-009	2256	Pump Outlet Elbow	X
9	9022-010	2460U	Pump, Single Stage	X
10	9022-011	2454	Coupling	X
11	9022-012	2459U	Blower	X
12	9022-013	2456U	Motor 1/7 HP 3450 RPM	X
13	9022-020	5963001	Cad Cell	X
14	9022-024	3616	Mounting Flange Gasket	X
15	9022-015	NL72YH	Nozzle Line Electrode Assembly	X
16	9022-017	5780	Electrode Insulator Assembly	X
17	9011-003		Nozzle 1.00 GPH 80 degree A	X
18	9022-016	213U	Nozzle Adapter, Single	X
19	9022-023	3384P	Static Plate 3-3/8"	X
20	9022-018	3666	Bulkhead Fitting Locknut	X

Date: 9-08-89
Supersedes:

