

# REPLACEMENT PARTS MANUAL

## GAS FURNACES

### MPG SERIES

BTU/HR:	40,000	60,000	80,000
	100,000	120,000	140,000

Manual 2110-865      Revision      Date 12-02-92      Supersedes

\*\*\*\*\*  
\* GENERAL NOTES \*  
\*\*\*\*\*

\*Revised and/or additional pages may be issued from time to time.  
\*A complete and current manual consists of pages dated as shown in the following index.

\*\*\*\*\*  
\*\* INDEX \*\*  
\*\*\*\*\*

<u>Page Description</u>	<u>Page</u>	<u>Date</u>	<u>Supersedes</u>
Functional Components--Exploded View	1	12-02-92	
"                   "    --Usage List	2	12-02-92	
"                   "    --Usage Listt	3	12-02-92	

\*\*\*\*\*  
\*\*\* IMPORTANT \*\*\*  
\*\*\*\*\*

Contact the installing and/or local distributor for all parts requirements. Make sure you have the complete model and serial number available from the unit rating plate.

# PARTS

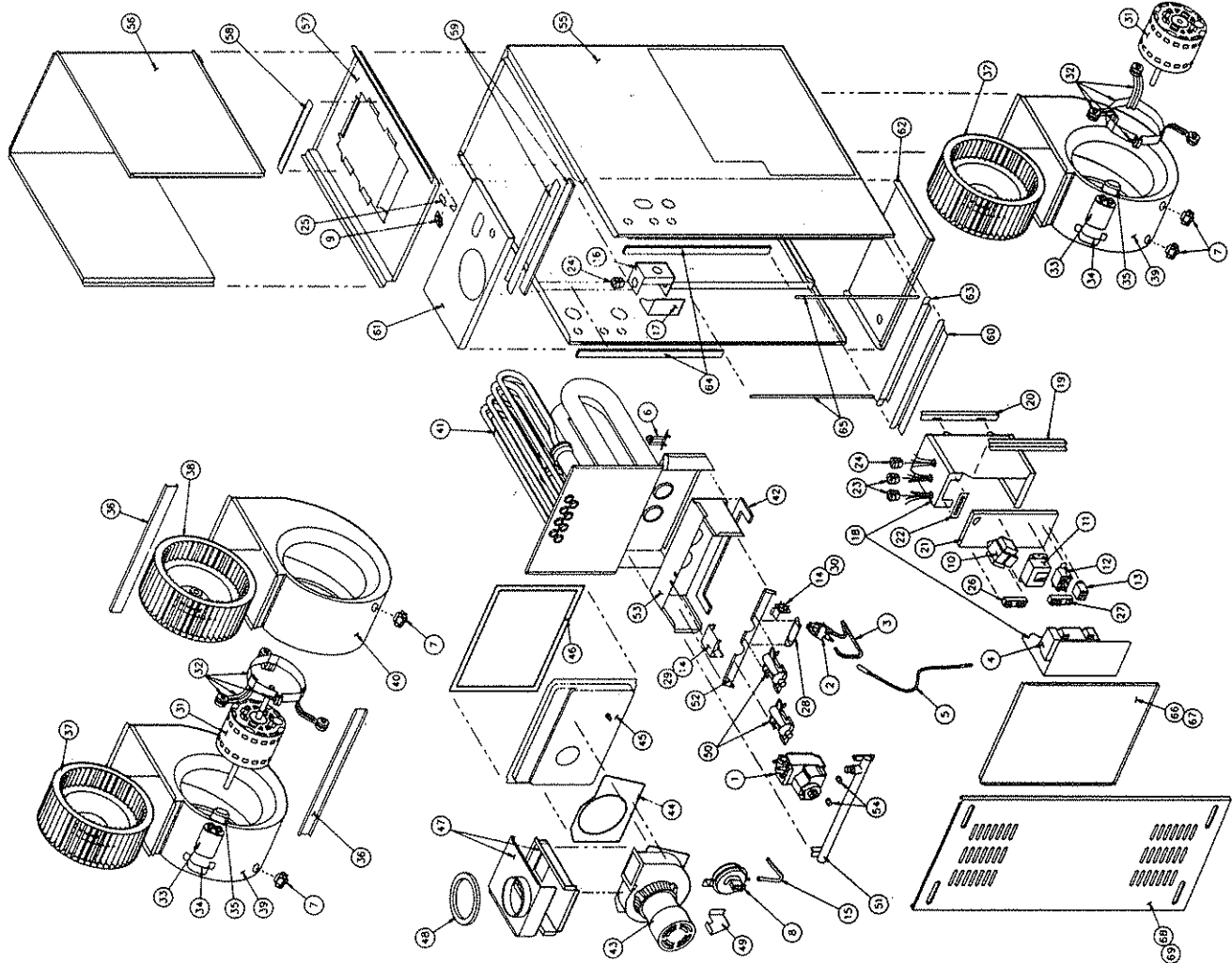
## FUNCTIONAL PARTS LIST

The format of this parts list allows you to get the part number quickly. It allows you to easily identify the part and the part number. Propane Conversion Kit and Filter Frames are also listed in the parts list.

If you do not know the part number, find the part illustration to the left and note the illustration number. Locate the illustration number in the Parts List on the back foldout of this packet. Read across the list to locate the part number for the appropriate size furnace.

**EXAMPLE:** You need an inducer motor relay for a 60,000 BTUH input 1/3 H.P. furnace:

1. Find the inducer motor relay in the illustration and get the illustration number (in this case 13).
2. Go to the table and read down to illustration number 13.
3. Read across the row to find the part number for the 60,000 BTUH input 1/3 H.P. furnace.
4. Read part number 9043-316.



Date: 12-02-92  
Supersedes:

No.	Description	40,000		60,000		80,000		100,000		120,000		140,000	
		1/4 HP	1/3 HP	1/2 HP	3/4 HP	1/2 HP	3/4 HP	1/2 HP	3/4 HP	1/2 HP	3/4 HP	1/2 HP	3/4 HP
Model No. (1) MP3		040D24	040D36	060D24	060D36	080D48	080D60	100D48	100D60	120D60	140D60	140D60	140D60
<b>CONTROLS GROUP</b>													
1	Gas Control - HW Nat (VR820-4M8005)	9043-300	9043-300	9043-300	9043-300	9043-300	9043-300	9043-300	9043-300	9043-300	9043-300	9043-300	9043-300
2	Pilot/Ignitor HW NAT (Q345A-1990)	9043-301	9043-301	9043-301	9043-301	9043-301	9043-301	9043-301	9043-301	9043-301	9043-301	9043-301	9043-301
3	Pilot Tubing	9043-302	9043-302	9043-302	9043-302	9043-302	9043-302	9043-302	9043-302	9043-302	9043-302	9043-302	9043-302
4	Ignition Lockout Module S9600H	5651-073	5651-073	5651-073	5651-073	5651-073	5651-073	5651-073	5651-073	5651-073	5651-073	5651-073	5651-073
5	Ignition Lockout Module Ignition Wire	9043-303	9043-303	9043-303	9043-303	9043-303	9043-303	9043-303	9043-303	9043-303	9043-303	9043-303	9043-303
<b>ELECTRONIC GROUP CONTROLS</b>													
6	Primary Limit Switch	9043-304	9043-305	9043-304	9043-305	9043-304	9043-305	9043-304	9043-305	9043-304	9043-305	9043-304	9043-305
7	Auxiliary Limit Switch	9043-306	9043-306	9043-307	9043-306	9043-306	9043-306	9043-310	9043-308	9043-309	9043-308	9043-308	9043-308
8	Pressure Switch	9043-311	9043-311	9043-311	9043-311	9043-311	9043-311	9043-311	9043-311	9043-311	9043-311	9043-311	9043-311
9	Blower Door Switch	9043-312	9043-312	9043-312	9043-312	9043-312	9043-312	9043-312	9043-312	9043-312	9043-312	9043-312	9043-312
10	Transformer 40VA	9043-313	9043-313	9043-313	9043-313	9043-313	9043-313	9043-313	9043-313	9043-313	9043-313	9043-313	9043-313
11	Time Delay Relay Switch	9043-314	9043-314	9043-314	9043-314	9043-314	9043-314	9043-314	9043-314	9043-314	9043-314	9043-314	9043-314
12	Blower Relay	9043-315	9043-315	9043-315	9043-315	9043-315	9043-315	9043-315	9043-315	9043-315	9043-315	9043-315	9043-315
13	Inducer Motor Relay	9043-316	9043-316	9043-316	9043-316	9043-316	9043-316	9043-316	9043-316	9043-316	9043-316	9043-316	9043-316
14	Burner Limit Switch	9043-317	9043-317	9043-317	9043-317	9043-317	9043-317	9043-317	9043-317	9043-317	9043-317	9043-317	9043-317
<b>HARDWARE</b>													
15	Pressure Switch Tubing	9043-318	9043-318	9043-318	9043-318	9043-318	9043-318	9043-318	9043-318	9043-318	9043-318	9043-318	9043-318
16	Junction Box	.	.	.	.	.	.	.	.	.	.	.	.
17	Junction Box Cover	.	.	.	.	.	.	.	.	.	.	.	.
18	Control Box	.	.	.	.	.	.	.	.	.	.	.	.
19	Control Box Front Mounting Bracket	.	.	.	.	.	.	.	.	.	.	.	.
20	Control Box Rear Mounting Bracket	.	.	.	.	.	.	.	.	.	.	.	.
21	Component Base	.	.	.	.	.	.	.	.	.	.	.	.
22	Terminal Strip	.	.	.	.	.	.	.	.	.	.	.	.
23	Strain Relief	.	.	.	.	.	.	.	.	.	.	.	.
24	Strain Relief	.	.	.	.	.	.	.	.	.	.	.	.
25	Blower Door Switch Bracket	.	.	.	.	.	.	.	.	.	.	.	.
26	Terminal Blocks (low voltage)	.	.	.	.	.	.	.	.	.	.	.	.
27	Terminal Blocks (high voltage)	.	.	.	.	.	.	.	.	.	.	.	.
Wire Harness Kit (All wires except blower wires)													
28	Pilot Mounting Bracket	.	.	.	.	.	.	.	.	.	.	.	.
29	Upper Burner Limit Switch Bracket	.	.	.	.	.	.	.	.	.	.	.	.
30	Lower Burner Limit Switch Bracket	.	.	.	.	.	.	.	.	.	.	.	.
<b>BLOWER GROUP</b>													
31	Blower Assembly (Complete)	9043-319	9043-320	9043-319	9043-320	9043-321	9043-322	9043-321	9043-322	9043-322	9043-322	9043-322	9043-322
32	Blower Motor	9043-324	9043-325	9043-324	9043-325	9043-326	9043-327	9043-326	9043-327	9043-327	9043-327	9043-327	9043-327
33	Motor Mounting Kit	9043-328	9043-328	9043-328	9043-328	9043-329	9043-328	9043-328	9043-328	9043-328	9043-328	9043-328	9043-328
34	Capacitor	8552-004	8552-004	8552-004	8552-004	8552-004	8552-004	8552-004	8552-004	8552-004	8552-004	8552-004	8552-004
35	Capacitor Strap	.	.	.	.	.	.	.	.	.	.	.	.
36	Capacitor Box	.	.	.	.	.	.	.	.	.	.	.	.
37	Blower Housing Support	N/A	N/A	N/A	N/A	N/A	N/A	N/A	N/A	N/A	N/A	N/A	N/A
38	Blower Wheel Direct Drive (convex)	9043-330	9043-331	9043-330	9043-331	9043-332	9043-333	9043-332	9043-333	9043-333	9043-333	9043-333	9043-333
39	Blower Wheel Direct Drive (concave)	N/A	N/A	N/A	N/A	N/A	N/A	N/A	N/A	N/A	N/A	N/A	N/A
40	Blower Housing	9043-334	9043-335	9043-334	9043-335	9043-336	9043-337	9043-336	9043-337	9043-337	9043-337	9043-337	9043-337
	Blower Housing	N/A	N/A	N/A	N/A	N/A	N/A	N/A	N/A	N/A	N/A	N/A	N/A

BTU/AIR MOTOR HORSEPOWER	Model No. (1) MPG										
	40,000 1/4 HP	40,000 1/3 HP	60,000 1/4 HP	60,000 1/3 HP	60,000 1/2 HP	80,000 1/2 HP	80,000 3/4 HP	100,000 1/2 HP	100,000 3/4 HP	120,000 3/4 HP	140,000 3/4 HP
No. Description	040D24	040D36	060D24	060D36	060D48	080D48	080D60	100D48	100D60	120D60	140D60
<b>HEAT EXCHANGER GROUP</b>											
41 Heat Exchanger Assembly	9043-340	9043-340	9043-341	9043-341	9043-342	9043-343	9043-344	9043-345	9043-346	9043-347	9043-348
42 Bottom Bulkhead Gasket											
<b>DRAFT INDUCER GROUP</b>											
43 Draft Inducer Motor Assembly	9043-349	9043-349	9043-349	9043-349	9043-349	9043-349	9043-349	9043-350	9043-350	9043-350	9043-350
44 Draft Inducer Motor Gasket	9043-351	9043-351	9043-351	9043-351	9043-351	9043-351	9043-351	9043-351	9043-351	9043-351	9043-351
45 Inducer Pan Assembly	9043-352	9043-352	9043-352	9043-352	9043-352	9043-352	9043-352	9043-352	9043-352	9043-352	9043-352
46 Inducer Pan Gasket	9043-361	9043-361	9043-361	9043-361	9043-361	9043-361	9043-361	9043-361	9043-361	9043-361	9043-361
47 Flue Box	9043-362	9043-362	9043-362	9043-362	9043-362	9043-362	9043-362	9043-362	9043-362	9043-362	9043-362
48 Vent Gasket	9043-365	9043-365	9043-365	9043-365	9043-365	9043-365	9043-365	9043-365	9043-365	9043-365	9043-365
49 Flue Box Support											
<b>BURNER GROUP</b>											
50 Main Burner	9043-366	9043-366	9043-366	9043-366	9043-366	9043-366	9043-366	9043-366	9043-366	9043-366	9043-366
51 Manifold	9043-367	9043-367	9043-367	9043-367	9043-367	9043-367	9043-367	9043-367	9043-367	9043-367	9043-367
52 Main Burner Mount											
53 Venturi Plate											
54 Main Burner Orifices	9043-373	9043-373	9043-373	9043-373	9043-373	9043-373	9043-373	9043-373	9043-373	9043-373	9043-373
<b>CASING GROUP</b>											
55 Casing											
56 Radiation Shield Assembly											
57 Blower Deck											
58 Air Baffle											
59 Insulated Duct Flange											
60 Door Channel											
61 Top Plate Assembly	9043-374	9043-374	9043-374	9043-374	9043-374	9043-374	9043-374	9043-374	9043-374	9043-374	9043-374
62 Base Panel	9043-379	9043-379	9043-379	9043-379	9043-379	9043-379	9043-379	9043-379	9043-379	9043-379	9043-379
63 Base Support											
64 Hem Gaskets											
65 Door Gaskets											
<b>ACCESSORY GROUP</b>											
66 Blower Door	9043-398	9043-398	9043-398	9043-398	9043-398	9043-398	9043-398	9043-398	9043-398	9043-398	9043-398
68 Outer Door	9043-383	9043-383	9043-383	9043-383	9043-383	9043-383	9043-383	9043-383	9043-383	9043-383	9043-383
70 Bottom Closures (10) Upflow	9043-404	9043-404	9043-404	9043-404	9043-404	9043-404	9043-404	9043-404	9043-404	9043-404	9043-404
71 Filters (10) 14x25 Upflow	N/A	N/A	N/A	N/A	N/A	N/A	N/A	N/A	N/A	N/A	N/A
72 Filters (10) 16x25 Upflow	N/A	N/A	N/A	N/A	N/A	N/A	N/A	N/A	N/A	N/A	N/A
73 Filters (10) 20x25 (Upflow)	9043-407	9043-407	9043-407	9043-407	9043-407	9043-407	9043-407	9043-407	9043-407	9043-407	9043-407
74 Filters (10) 16x20 (All Downflow)	9043-387	9043-387	9043-387	9043-387	9043-387	9043-387	9043-387	9043-387	9043-387	9043-387	9043-387
75 Combustion Floor Base (10) (Downflow)	9043-388	9043-388	9043-388	9043-388	9043-388	9043-388	9043-388	9043-388	9043-388	9043-388	9043-388
76 Bottom Filter Box (Upflow)	9043-392	9043-392	9043-392	9043-392	9043-392	9043-392	9043-392	9043-392	9043-392	9043-392	9043-392
77 Side Filter Cabinet (Upflow)	9043-393	9043-393	9043-393	9043-393	9043-393	9043-393	9043-393	9043-393	9043-393	9043-393	9043-393
78 Downflow Filter Kit	9043-394	9043-394	9043-394	9043-394	9043-394	9043-394	9043-394	9043-394	9043-394	9043-394	9043-394
79 LP Conversion Kit	9043-395	9043-395	9043-395	9043-395	9043-395	9043-395	9043-395	9043-395	9043-395	9043-395	9043-395
80 Natural Gas Conversion Kit	9043-402	9043-402	9043-402	9043-402	9043-402	9043-402	9043-402	9043-402	9043-402	9043-402	9043-402
84 California Nox Screen (1)											

(1) Basic models have "A" suffix letter, California NOx models have "AX" suffix.

• Consult factory  
N/A Not applicable