

REPLACEMENT PARTS MANUAL

WATER SOURCE HEAT PUMP MODELS WPV24, WPV30B, WPV36B

Manual 2110-726

Revision B

Date 11-05-91

Supersedes 9-01-90

* GENERAL NOTES *

*Revised and/or additional pages may be issued from time to time.
*A complete and current manual consists of pages dated as shown in the following index.

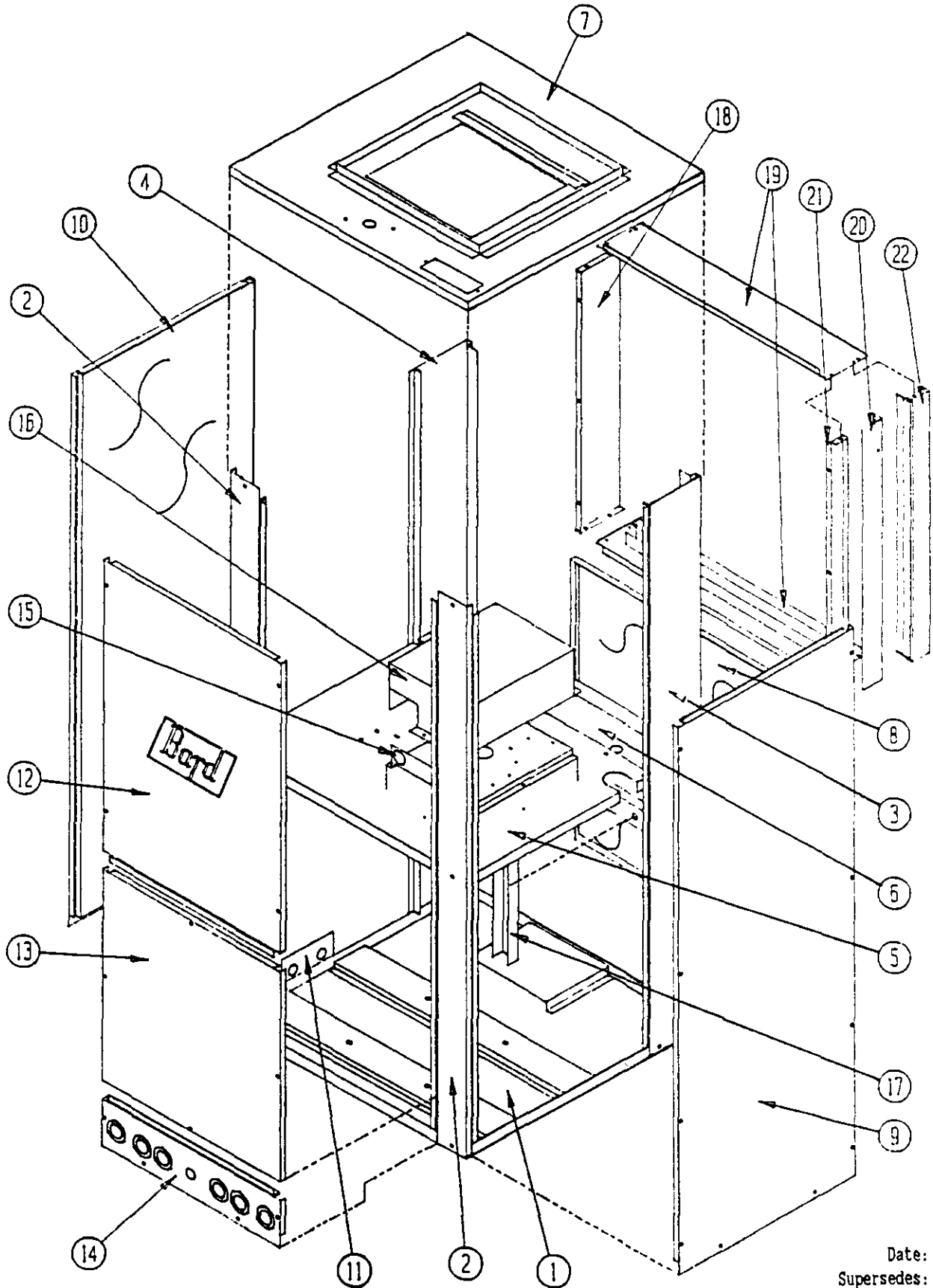
** INDEX **

<u>Page Description</u>	<u>Page</u>	<u>Date</u>	<u>Supersedes</u>
Cabinet Components--Exploded View	1	7-11-89	
" " --Usage List	2	11-05-91	7-11-89
Functional Components--Exploded View	3	11-05-91	7-11-89
" " --Usage List	4	11-05-91	9-01-90
Control Panel--Layout View	5	7-11-89	
" " --Usage List	6	11-05-91	9-01-90

*** IMPORTANT ***

Contact the installing and/or local Bard distributor for all parts requirements. Make sure you have the complete model and serial number available from the unit rating plate.

CABINET COMPONENTS



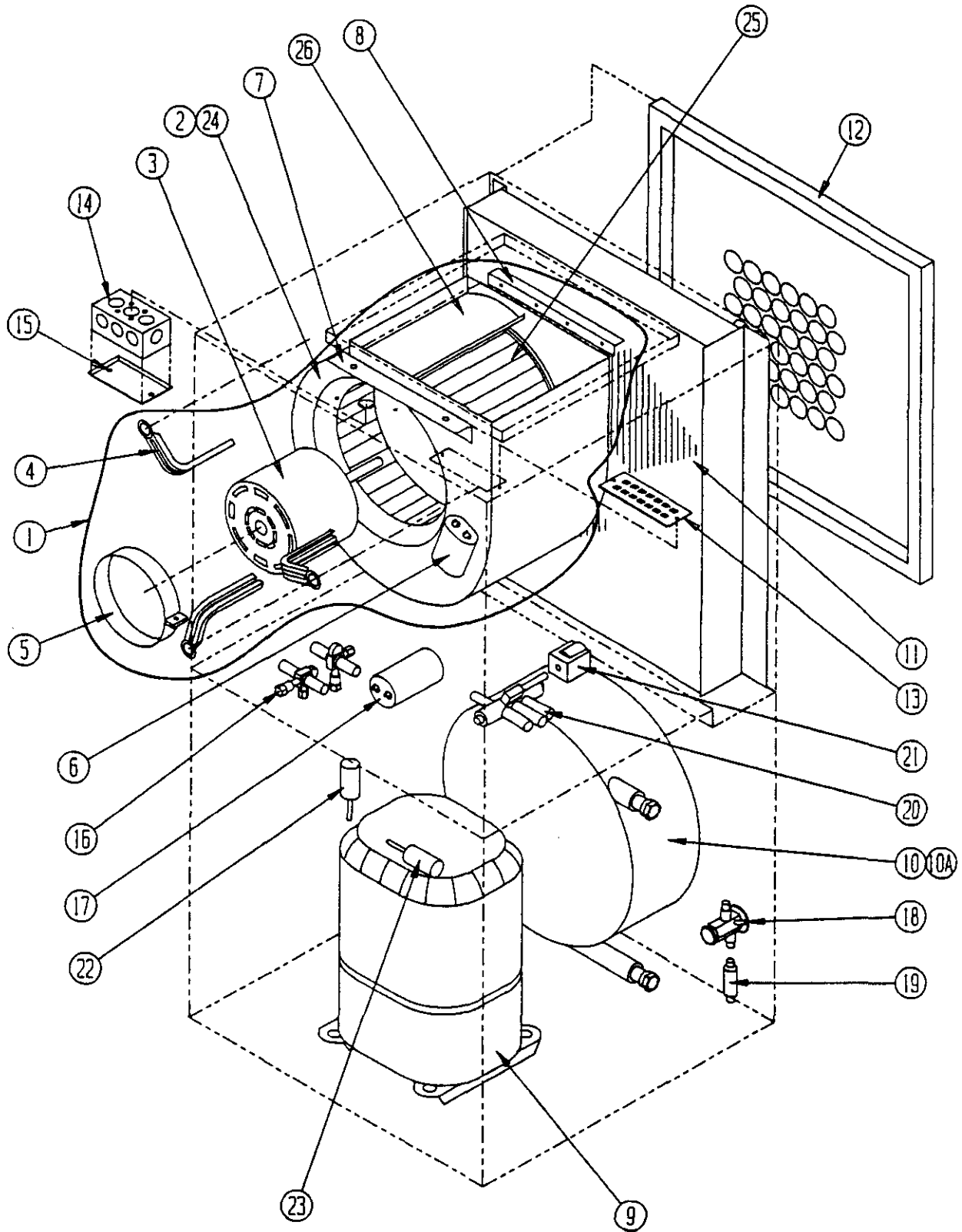
Date: 7-11-8
Supersedes:

CABINET COMPONENTS

Dwg. No.	Part No.	Description	WPV24	WPV30B	WPV36B
1	127-145	Base Weld Assembly	X	X	X
2	548-003	Front Corner Assembly	(2)	(2)	(2)
3	549X001	Right Rear Corner Assembly	X	X	X
4	549Y001	Left Rear Corner Assembly	X	X	X
5	520-118	Partition Assembly	X	X	X
6	523-004	Water Pan Assembly	X	X	X
7	507-110	Top Assembly	X	X	X
8	509-072	Lower Back Assembly	X	X	X
9	552-006	Right Access Assembly	X	X	X
10	552-157	Left Access Assembly	X	X	X
11	156-022	Tubing Entrance Assembly	X	X	X
12	514-004	Top Front Assembly	X	X	X
13	514-005	Bottom Front Assembly	X	X	X
14	556-020	Water Entrance Panel Assembly	X	X	X
15	116-114	Control Panel	X	X	X
16	132-006	Control Panel Cover	X	X	X
17	140-143	Support--Water Coil Hold Down	X	X	X
18	130-008	Filter Rack Side	X	X	X
19	131-006	Filter Rack Top and Bottom Weld Assembly	X	X	X
20	130-005	Filter Rack Door	X	X	X
21	130-009	Filter Rack Side	(2)	(2)	(2)
22	131-007	Filter Rack Side Weld Assembly	X	X	X

Date: 11-05-91
 Supersedes: 7-11-89

FUNCTIONAL COMPONENTS



Date: 11-05-91
Supersedes: 7-11-89

FUNCTIONAL COMPONENTS

	Part No.	Description	WPV24	WPV30B	WPV36B
1	900-048	Blower Assembly Complete (See Note)		A	A
1	900-162	Blower Assembly Complete (See Note)		B	B
1	900-172	Blower Assembly Complete	x		
2	5152-046	Blower Housing with Wheel and Diffuser		x	x
3	8104-008	Motor 1/4 HP	x		
3	8105-010	Motor 1/3 h.p. (See Note)		A	A
3	8105-022	Motor 1/3 h.p. (See Note)		B	B
4	8200-036	Motor Mount Arm with Grommets	3	3	3
5	8200-033	Motor Mount Band	x	x	x
6	8552-002	Capacitor 5 MFD--370 V--1-1/4" Oval (See Note)	x	A	A
6	8552-004	Capacitor 7-1/2 MFD--370V--1-1/4" Oval (See Note)		B	B
7	104-503	Angle--Front		x	x
7	104-865	Angle--Front	x		
8	104-504	Angle--Rear	x	x	x
9	8000-052	Compressor CRG3-0250-PEV-270			x
9	8000-101	Compressor 703283-02-1074		x	
9	8000-129	Compressor ZR18K1-PEV-230	x		
10	917-0018	Water Coil Assembly w/Insulation		x	
10	917-0017	Water Coil Assembly w/Insulation			x
10	917-0024	Water Coil Assembly W/Insulation	x		
10A	5020-026	Insulation Jacket Only	x	x	x
11	5060-011	Evaporator Coil	x	x	x
12	7004-011	Filter 22x22x1	x	x	x
13	8607-019	Terminal Board 24V	x	x	x
14	8614-002	Outlet Box 2" x 4"	x	x	x
15	8614-003	Blank Cover 2" x 4"	x	x	x
16	5651-055	Full Flow Valve 3/8"	2	2	
16	5651-056	Full Flow Valve 1/2"			2
17	8552-027	Capacitor 25/370V	x		
17	8552-035	Capacitor 40/370V 2" round			x
17	8552-045	Capacitor 30/370 1-3/4" R		x	
18	5651-066	Expansion Valve		x	x
18	5651-085	Expansion Valve	x		
19	5210-010	Strainer	(2)	(2)	(2)
20	5650-005	Reversing Valve	x	x	
20	5650-009	Reversing Valve			x
21	5650-008	Reversing Valve Solenoid	x	x	x
22	8406-045	Low Pressure Switch	x	x	x
23	8406-016	High Pressure Switch	x	x	x
24	151-100	Blower Housing	x		
25	5152-003	Blower Wheel	x		
26	144-165	Blower Diffuser	x		
OPTIONAL ITEMS					
	8603-016	Solenoid Valve 24V	x	x	x
	8603-010	Constant Flow Valve 4 GPM	x	x	
	8603-011	Constant Flow Valve 5 GPM			x
	8604-080	Duct Heater 5KW	x	x	x
	8604-081	Duct Heater 9.8KW	x	x	x
	8604-082	Duct Heater 14.7KW	x	x	x
	8604-083	Duct Heater 19.2KW	x	x	x

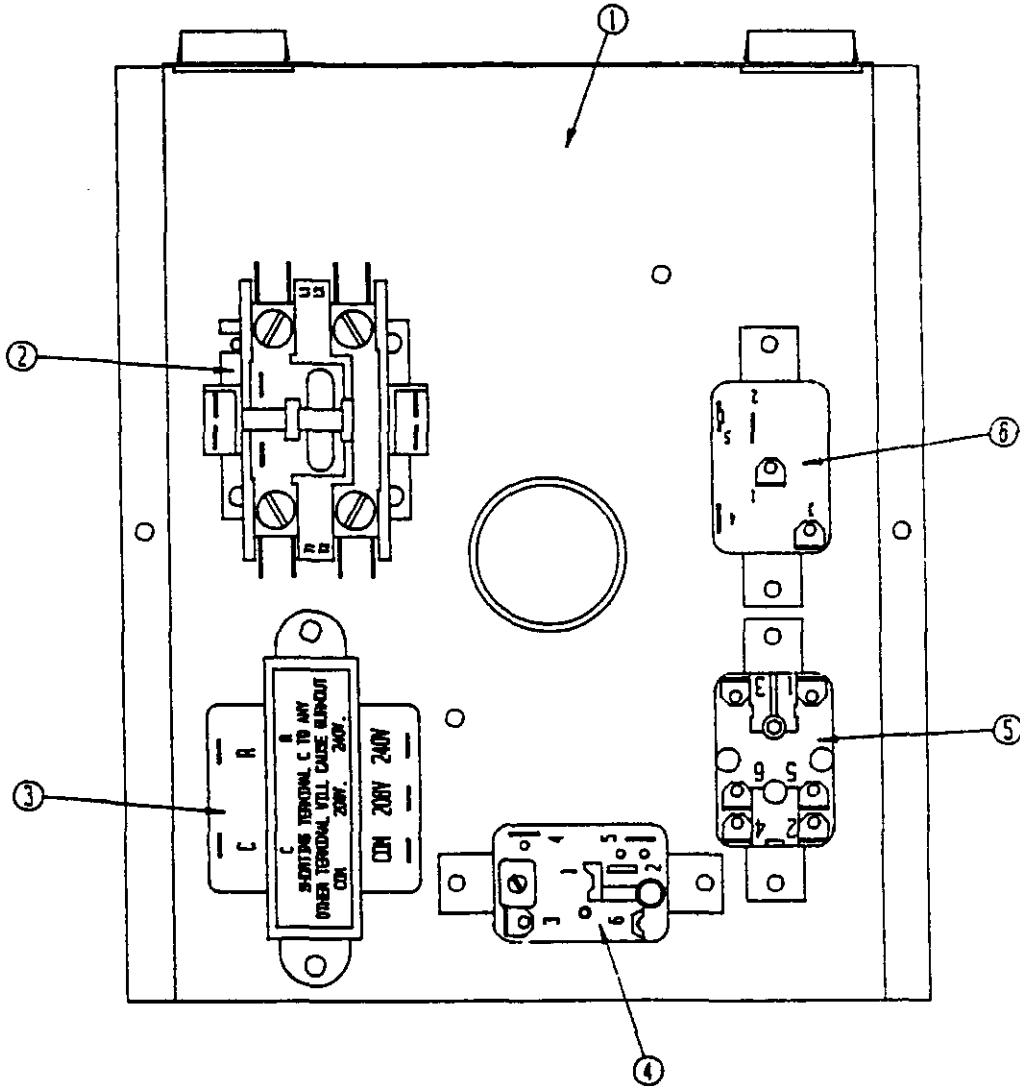
NOTE A: For units produced before date code L90.

NOTE B: For units produced with date code L90 and after.

Date: 11-05-91
Supersedes: 9-01-90

2110-726

CONTROL PANEL



Date: 7-11-89
Supersedes:

CONTROL PANEL

Item	Part No.	Description	WPV24	WPV30B	WPV36B
1	116-114	Control Panel	X	X	X
2	8401-007	Compressor Contactor		X	X
2	8401-026	Compressor Contactor 1P25A With 5 Min. Time Delay	X		
3	8407-035	Transformer	X	X	X
4	8201-034	Lockout Relay	X	X	X
5	8201-015	Emergency Heat Relay	X	X	X
6	8201-008	Blower Relay	X	X	X
	4054-110	Wiring Diagram (See Note)		A	A
	4054-112	Wiring Diagram (See Note)		B	B
	4054-113	Wiring Diagram	X		

NOTE A: For units produced before date code L90.

NOTE B: For units produced with date code L90 and after.

Date: 11-05-91
Supersedes: 9-01-90

2110-726
Page: 6

