

REPLACEMENT PARTS MANUAL

WALL MOUNTED PACKAGE AIR CONDITIONER MODEL 60WA

Manual 2110-407

Revision D

Date 7-26-91

Supersedes 3-01-91

* GENERAL NOTES *

*Revised and/or additional pages may be issued from time to time.
*A complete and current manual consists of pages dated as shown in the following index.

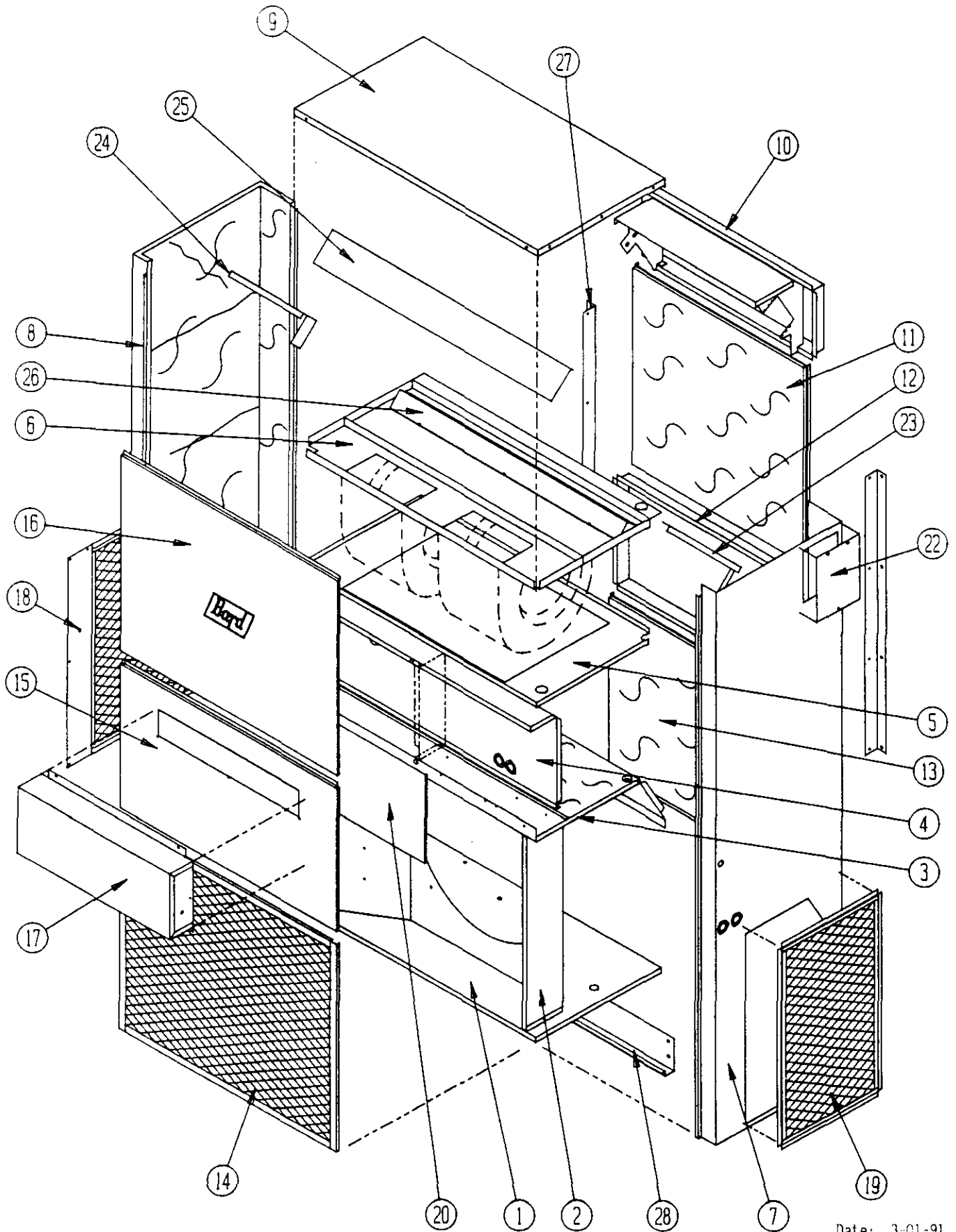
** INDEX **

<u>Page Description</u>	<u>Page</u>	<u>Date</u>	<u>Supersedes</u>
Cabinet Components--Exploded View	1	3-01-91	7-11-89
" " --Usage List	2	3-01-91	9-14-90
Functional Components--Exploded View	3	7-11-89	
" " --Usage List	4	3-01-91	7-11-89
Functional Components--Exploded View	5	7-11-89	
" " --Usage List	6	7-26-91	3-01-91
Control Panel W/O Circuit Breaker--Layout	7	9-14-90	7-11-89
" " " " " --Usage List	8	7-26-91	9-14-90
Control Panel W/Circuit Breaker--Layout	9	9-14-90	7-11-89
" " " " " --Usage List	10	9-14-90	1-25-90
Blower Assembly--Exploded View	11	7-11-89	
" " --Usage List	12	9-14-90	7-11-89

*** IMPORTANT ***

Contact the installing and/or local Bard distributor for all parts requirements. Make sure you have the complete model and serial number available from the unit rating plate.

CABINET COMPONENTS



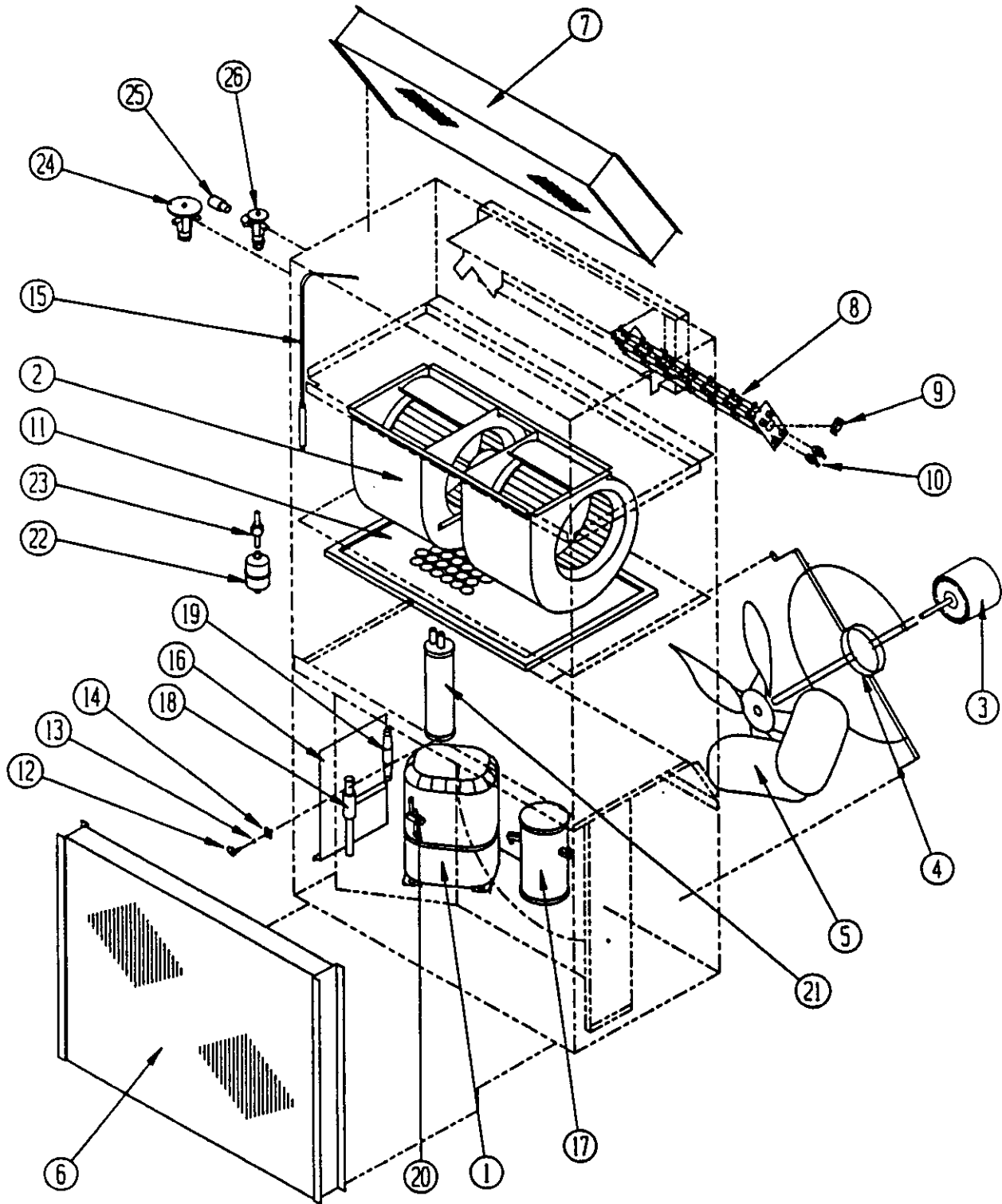
Date: 3-01-91
Supersedes: 7-11-89

CABINET COMPONENTS

Item	Part No.	Description	6 O W A A	6 O W A B, C
1	127-005	Lower Base	x	x
2	124-003	Fan Shroud	x	x
3	520-133	Condenser Partition	x	x
4	Control Pnl. Assy.	See Control Panel Assembly Drawing and Parts List	x	x
5	130-075	Filter Tray	x	x
6	521-006	Water Pan/Blower Partition	x	x
7	501-168	Right Side	x	x
8	501-169	Left Side	x	x
9	506-097	Top	x	x
10	111-019	Outlet Airframe Assembly	x	x
11	508-059	Upper Back	x	x
12	111-020	Inlet Air Frame Assembly	x	x
13	108-060	Lower Back	x	x
14	119-005	Coil Grille	x	x
15	552-108	Service Door	x	x
16	514-047	Upper Front	x	x
17	962002	Fresh Air Damper	x	x
18	119-006	Left Side Grille		x
18	119-007	Left Side Grill	x	
19	119-008	Right Side Grille	x	x
20	Control Cover	See Control Panel Assembly Drawing and Parts List	x	x
22	542X005	Right Side Cover Plate	x	x
23	140-010	Support--Right Coil	x	x
24	140-011	Support--Left Coil	x	x
25	134-011	Top Evaporator Fill	x	x
26	136-003	Bottom Evaporator Fill	x	x
27	112-009	Side Mounting Bracket	x	x
28	112-006	Bottom Mounting Bracker	x	x

Date: 3-01-91
Supersedes: 9-14-90

FUNCTIONAL COMPONENTS



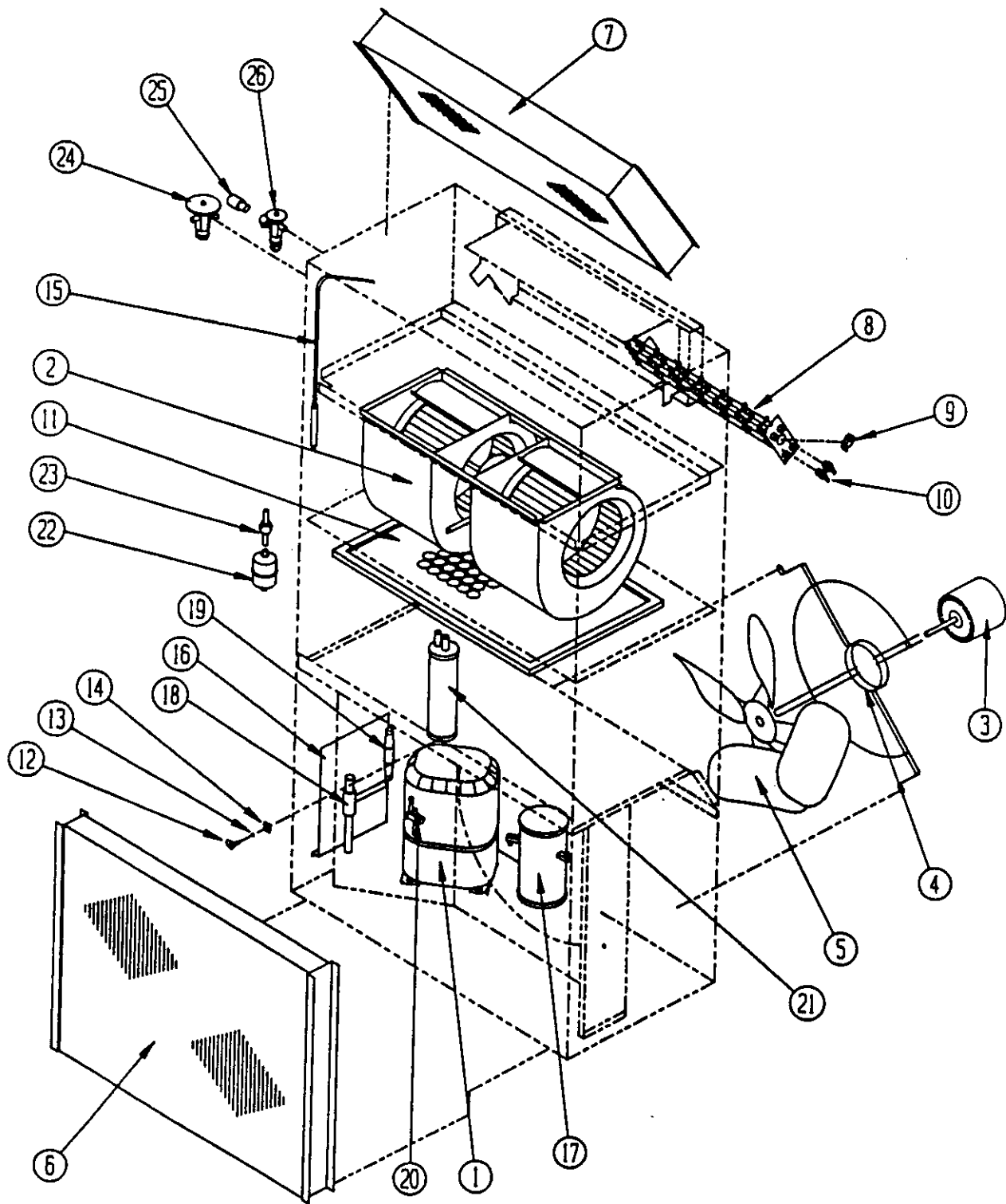
Date: 7-11-89
Supersedes:

FUNCTIONAL COMPONENTS

Dwg. No.	Part No.	Description	6 O W A A O O N, C	6 O W A A O O N, C	6 O W A A 1 5 O N, C	6 O W A A 2 O N, C	6 O W A B O O N, C	6 O W A B O 9 N, C	6 O W A B 1 5 N, C	6 O W A B 1 8 N, C	6 O W A C O O N, C	6 O W A C O 9 N, C	6 O W A C 1 5 N, C	6 O W A E O O N	6 O W A E 1 5 N	6 O W A F O O N	6 O W A E 1 4 N	
1	8000-091	Compressor H23A543ABCA	X	X	X	X	X	X	X	X								
1	8000-031	Compressor AG5553E					X	X	X	X				X	X			
1	8000-048	Compressor AG5553F									X	X	X			X	X	
2	900-119	Blower Assembly (Complete)	X	X	X	X	X	X	X	X				X	X	X	X	
2	900-120	Blower Assembly (Complete)									X	X	X					
3	8105-014	Condenser Motor												X	X	X	X	
3	8105-035	Condenser Motor	X	X	X	X	X	X	X									
3	8105-030	Condenser Motor									X	X	X					
4	8200-004	Motor Mount--Condenser	X	X	X	X	X	X	X	X	X	X	X	X	X	X	X	X
5	5151-026	Fan Blade												X	X	X	X	
5	5151-027	Fan Blade	X	X	X	X	X	X	X	X	X	X	X					
6	5051-028	Condenser Coil	X	X	X	X	X	X	X	X	X	X	X	X	X	X	X	X
7	5060-039	Evaporator Coil	X	X	X	X	X	X	X	X	X	X	X	X	X	X	X	X
8	8604-091	Heat Strip		X		2												
8	8604-047	Heat Strip			X				X							X		
8	8604-048	Heat Strip						X		2								
8	8604-072	Heat Strip										X						
8	8604-052	Heat Strip											X					
8	8604-087	Heat Strip																2
9	8402-047	Limit Control		X	X	X		X	X	X		X	X		X		X	
10	8402-032	Thermal Cutoff 4K9239H		2	3	4		2	3	4						3		4
10	8402-057	Thermal Cutoff 4K4218AH										2	3					
11	7004-016	Air Filter 20 x 30 x 1	X	X	X	X	X	X	X	X	X	X	X	X	X	X	X	X
12	1171-019	1/4 Turn Fastener	X	X	X	X	X	X	X	X	X	X	X	X	X	X	X	X
13	1171-021	Retainer Washer	X	X	X	X	X	X	X	X	X	X	X	X	X	X	X	X
14	1171-020	Receptacle	X	X	X	X	X	X	X	X	X	X	X	X	X	X	X	X
15	800-0094	Cooling Tube Capillary	X	X	X	X	X	X	X	X	X	X	X	X	X	X	X	X
16	134-068	Wire Shield	X	X	X	X												

Date: 3-01-91
Supersedes: 7-11-89

FUNCTIONAL COMPONENTS



Date: 7-11-89
Supersedes:

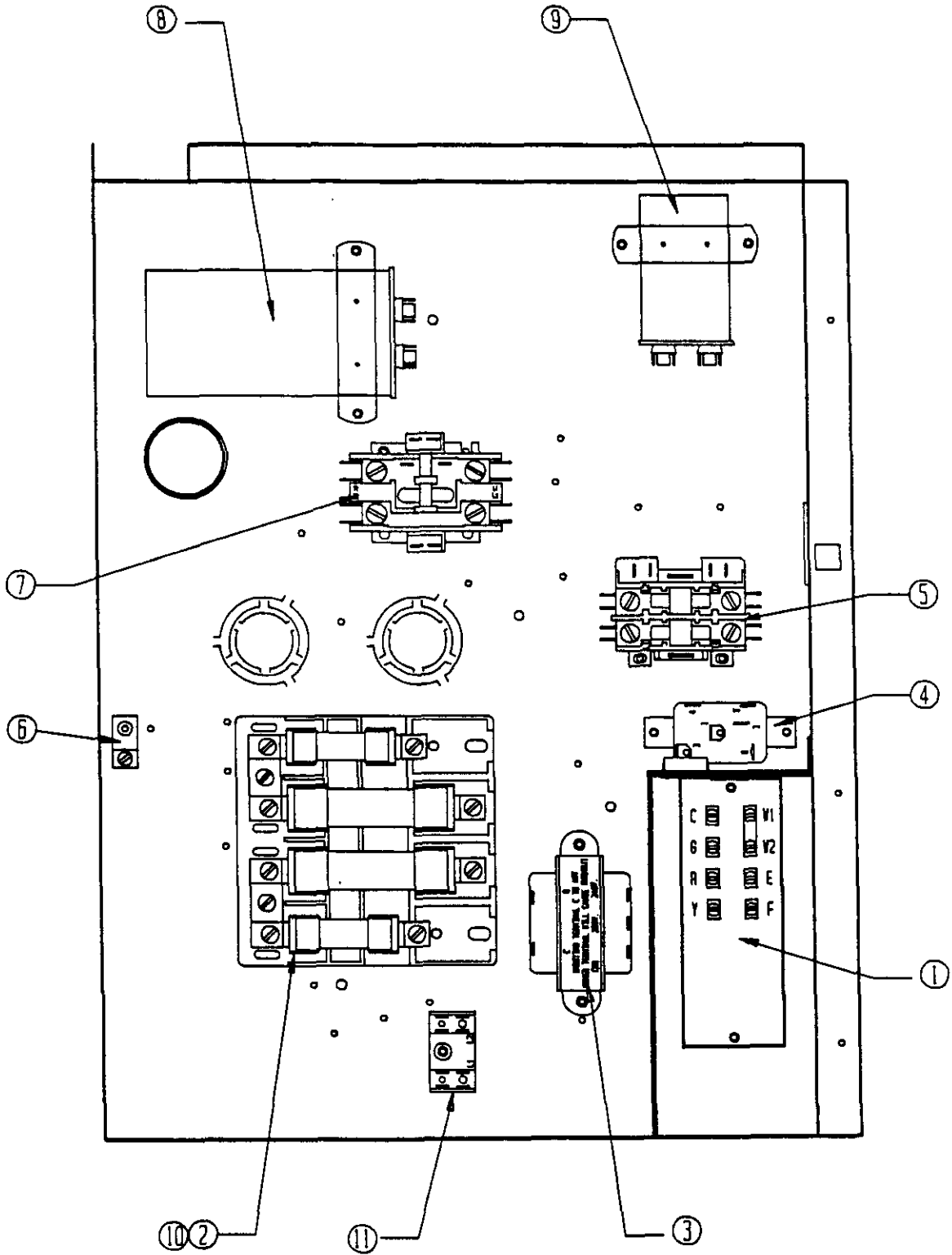
FUNCTIONAL COMPONENTS

Dwg. No.	Part No.	Description	6 O W A A I O H	6 O W A B O 9 H	6 O W A B I 8 H	6 O W A C O 0 H	6 O W A C O 9 H	6 O W A C I 5 H
1	8000-091	Compressor H23A543ABCA	x					
1	8000-031	Compressor AG5553E		x	x			
1	8000-048	Compressor AG5553F				x	x	x
2	900-119	Blower Assembly (Complete)	x	x	x			
2	900-120	Blower Assembly (Complete)				x	x	x
3	8105-035	Condenser Motor	x	x	x			
3	8105-030	Condenser Motor				x	x	x
4	8200-004	Motor Mount--Condenser	x	x	x	x	x	x
5	5151-027	Fan Blade	x	x	x	x	x	x
6	5051-028	Condenser Coil	x	x	x	x	x	x
7	5060-025	Evaporator Coil	x	x	x	x	x	x
8	8604-091	Heat Strip	x					
8	8604-048	Heat Strip		x	2			
8	8604-072	Heat Strip					x	
8	8604-052	Heat Strip						x
9	8402-047	Limit Control	x	x	x		x	x
10	8402-032	Thermal Cutoff 4K9239H	2	2	4			
10	8402-057	Thermal Cutoff 4K4218AH					2	3
11	7004-016	Air Filter 20 x 30 x 1	x	x	x	x	x	x
12	1171-019	1/4 Turn Fastener	x	x	x	x	x	x
13	1171-021	Retainer Washer	x	x	x	x	x	x
14	1171-020	Receptacle	x	x	x	x	x	x
16	134-010	Wire Shield		x	x	x	x	x
16	134-068	Wire Shield	x					
17	5203-006	Receiver	x	x	x	x	x	x
18	5651-015	Head Pressure Control Valve	x	x	x	x	x	x
19	5651-016	Pressure Differential Valve	x	x	x	x	x	x
20	5651-051	Shutoff Valve	x	x	x	x	x	x
21	5202-018	Accumulator	x	x	x	x	x	x
22	5201-002	Filter Drier	x	x	x	x	x	x
23	5201-014	Sight Glass	x	x	x	x	x	x
24	5651-064	Hot Gas Bypass Valve	x	x	x	x	x	x
25	5651-008	Distributor	x	x	x	x	x	x
26	5651-040	Expansion Valve	x	x	x	x	x	x

Date: 7-26-91
Supersedes: 3-01-91

2110-407

CONTROL PANEL WITHOUT CIRCUIT BREAKER



Date: 9-14-90
Supersedes: 7-11-89

CONTROL PANEL
WITHOUT CIRCUIT BREAKER

Dwg. No.	Part No.	Description	6 O W A A O O N	6 O W A A O O N	6 O W A A O O H	6 O W A A O 5 N	6 O W A A O N	6 O W A B O O N	6 O W A B O 9 N, H	6 O W A B O 5 N	6 O W A B O 8 N	6 O W A B O 8 H	6 O W A C O O N, H	6 O W A C O 9 N, H	6 O W A C O 5 N, H	6 O W A E O O N	6 O W A E O 5 N	6 O W A F O O N	6 O W A F O 4 N	
1	8607-018	Low Voltage Strip	x	x	x	x	x	x	x	x	x	x	x	x	x	x	x	x	x	x
2	8607-013	Terminal Block	x	x	A			x	x	x	x	A	x	x	x	x	x		2	2
2	8607-014	Terminal Block																		
2	8614-017	Fuse Block				x														
2	8614-018	Fuse Block			B		x													
2	8614-020	Fuse Block										B								
3	8407-034	Transformer	x	x	x	x	x	x	x	x	x					x	x	x	x	
3	8407-027	Transformer											x	x	x					
4	8201-009	Blower Relay	x	x	x	x	x	x	x	x	x					x	x	x	x	
4	8201-032	Blower Relay											x	x	x					
5	8401-006	Heat Contactor		x	2	2	2		x	2	2	2						2		
5	8401-002	Heat Contactor												x	x					2
6	8611-006	Ground Terminal	x	x	x	x	x	x	x	x	x	x	x	x	x	x	x	x	x	x
7	8401-016	Compressor Contactor	x	x	x	x	x													
7	8401-002	Compressor Contactor											x	x	x				x	x
7	8401-011	Compressor Contactor						x	x	x	x	x					x	x		
8	8552-031	Compressor Capacitor 45/440	x	x		x	x													
9	8552-005	Condenser Fan Capacitor 10/370	x	x	x	x	x	x	x	x	x					x	x	x	x	
9	8552-026	Condenser Fan Capacitor 15/370											x	x	x					
10	134-051	Terminal Block Shield																	x	x
10	8607-015	Phenolic Insulator											x	x	x					
11	8607-017	Terminal Block											x	x	x					
	4010-110	Wiring Diagram	x																	
	4010-130	Wiring Diagram		x	A															
	4010-133	Wiring Diagram			B															
	4010-140	Wiring Diagram				x														
	4010-150	Wiring Diagram					x													
	4010-210	Wiring Diagram						x												
	4010-220	Wiring Diagram							x											
	4010-230	Wiring Diagram								x										
	4010-240	Wiring Diagram									x									
	4010-242	Wiring Diagram										A								
	4010-310	Wiring Diagram										B								
	4010-320	Wiring Diagram											x							
	4010-330	Wiring Diagram												x						
	4010-510	Wiring Diagram													x					
	4010-530	Wiring Diagram														x				
	4010-610	Wiring Diagram																	x	
	4010-630	Wiring Diagram																		x
	132-081	Control Panel Cover	x	x	x			x	x	x	x	x	x	x	x	x	x	x	x	x
	133-054	Control Panel Cover				x	x													

(A) Used on units produced before H91.

(B) Used on units produced with H91 date code and later.

Date: 7-26-91
Supersedes: 9-14-90

2110-407

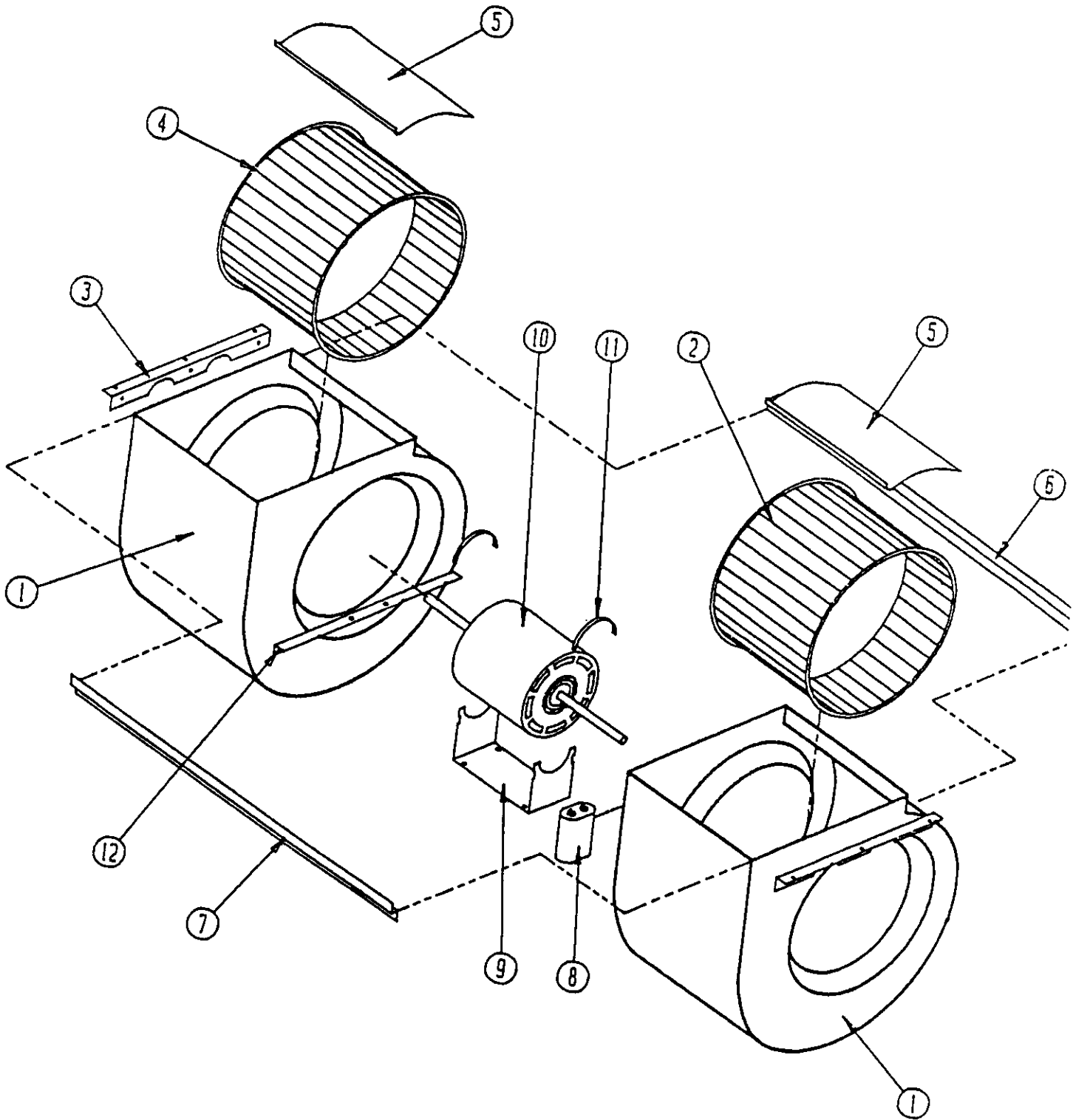
Page: 8

CONTROL PANEL
WITH CIRCUIT BREAKER

Dwg. No.	Part No.	Description	6 O W A A O O C	6 O W A A O O C	6 O W A A O O C	6 O W A A O O C	6 O W A B O O C	6 O W A B O O C	6 O W A B O O C	6 O W A B O O C	6 O W A C O O C	6 O W A C O O C	6 O W A C O O C
1	8607-018	Low Voltage Strip	x	x	x	x	x	x	x	x	x	x	x
2	8615-016	Circuit Breaker 60A	x	x	x	2							
2	8615-013	Circuit Breaker 30A			x								
2	8615-021	Circuit Breaker 45A					x	x					
2	8615-011	Circuit Breaker 60A							x	x			
2	8615-030	Circuit Breaker 20A									x	x	
2	8615-032	Circuit Breaker 30A											x
3	8607-034	Transformer	x	x	x	x	x	x	x	x			
3	8607-027	Transformer									x	x	x
4	8201-009	Blower Relay	x	x	x	x	x	x	x	x			
4	8201-032	Blower Relay									x	x	x
5	8401-006	Heat Contactor		x	2	2		x	2	2			
5	8401-002	Heat Contactor										x	x
6	8611-006	Ground Terminal	x	x	2	2	x	x	x	x	x	x	x
7	8401-016	Compressor Contactor	x	x	x	x							
7	8401-002	Compressor Contactor									x	x	x
7	8401-011	Compressor Contactor					x	x	x	x			
8	8552-031	Compressor Capacitor 45/440	x	x	x	x							
9	8552-005	Condenser Fan Capacitor 10/370	x	x	x	x	x	x	x	x			
9	8552-026	Condenser Fan Capacitor 15/370									x	x	x
10	8607-017	Terminal Block									x	x	x
	4010-111	Wiring Diagram	x										
	4010-131	Wiring Diagram		x									
	4010-141	Wiring Diagram			x								
	4010-151	Wiring Diagram				x							
	4010-211	Wiring Diagram					x						
	4010-221	Wiring Diagram						x					
	4010-231	Wiring Diagram							x				
	4010-241	Wiring Diagram								x			
	4010-311	Wiring Diagram									x		
	4010-321	Wiring Diagram										x	
	4010-331	Wiring Diagram											x
	132-092	Control Panel Cover									x	x	x
	132-094	Control Panel Cover	x	x	x	x	x	x	x	x			

Date: 9-14-90
Supersedes: 1-25-90

BLOWER ASSEMBLY



Date: 7-11-89
Supersedes:

BLOWER ASSEMBLY

Dwg. No.	Part No.	Description	9 0 0 1 1 9	9 0 0 1 2 0	9 0 0 1 2 1
1	151-068	Blower Housing	2	2	2
2	5152-011	Blower Wheel 10-8, CW	x	x	
2	5152-057	Blower Wheel 9-8, CW			x
3	104-791	Blower Angle	2	2	2
4	5152-012	Blower Wheel 10-8, CCW	x	x	
4	5152-058	Blower Wheel 9-8, CCW			x
5	144-126	Diffuser	2	2	2
6	104-802	Back Brace	x	x	x
7	102-389	Front Offset	x	x	x
8	8552-005	Capacitor 10/370	x	x	x
9	128-002	Motor Mount--Cradle	x	x	x
10	8106-023	Motor	x		x
10	8106-025	Motor		x	
11	8200-018	Motor Mount Latch	2	2	2
12	104-788	Motor Support Angle	2	2	2

Date: 9-14-90
Supersedes: 7-11-89

