

# REPLACEMENT PARTS MANUAL

## WALL MOUNTED PACKAGE AIR CONDITIONER MODEL 24WA6

Manual 2110-402

Revision D

Date 7-26-91

Supersedes 2-15-91

\*\*\*\*\*  
\* GENERAL NOTES \*  
\*\*\*\*\*

\*Revised and/or additional pages may be issued from time to time.  
\*A complete and current manual consists of pages dated as shown in the following index.

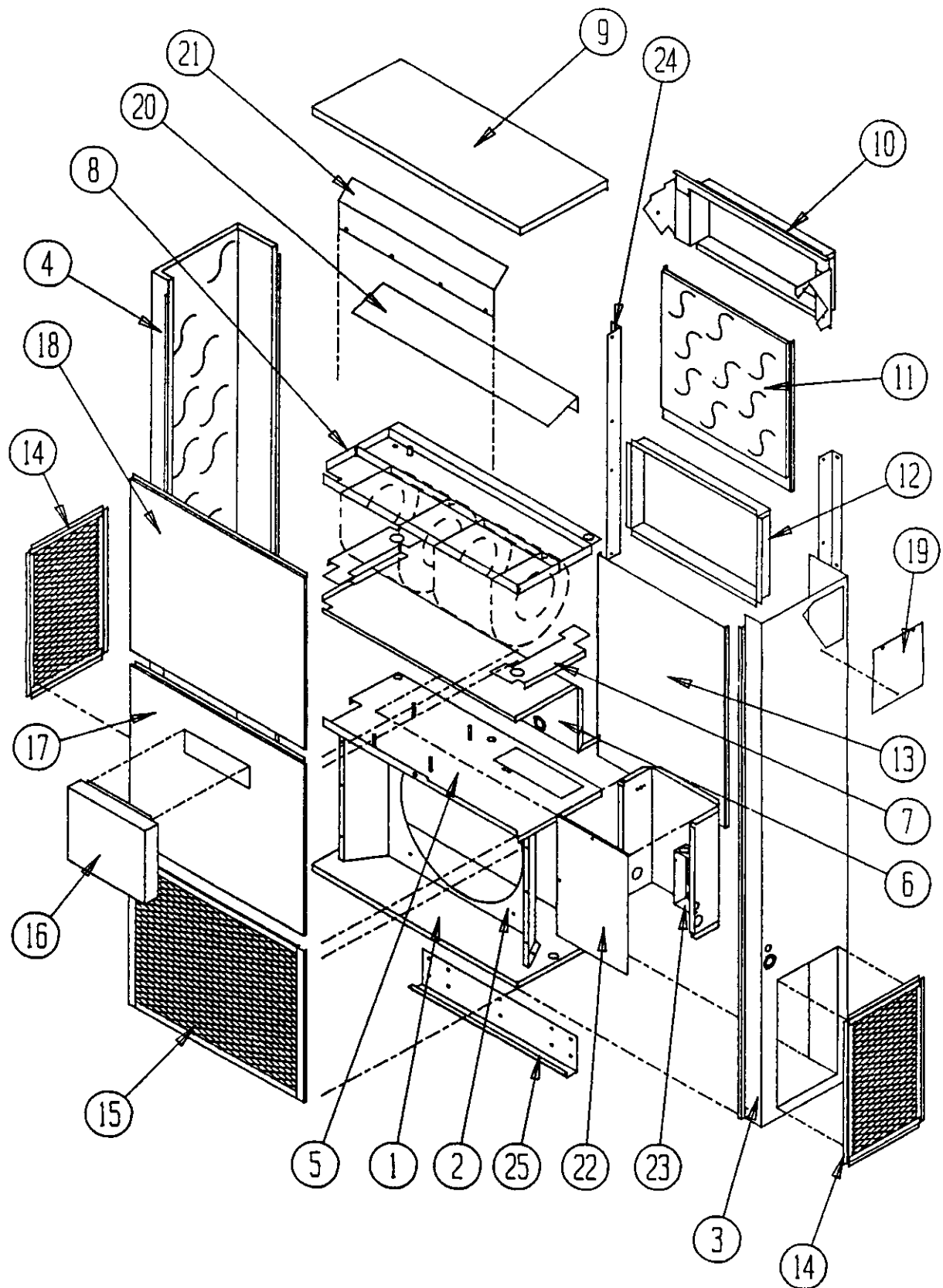
\*\*\*\*\*  
\*\* INDEX \*\*  
\*\*\*\*\*

<u>Page Description</u>	<u>Page</u>	<u>Date</u>	<u>Supersedes</u>
Cabinet Components--Exploded View	1	7-11-89	
" " --Usage List	2	2-15-91	1-25-90
Functional Components--Exploded View	3	7-11-89	
" " --Usage List	4	7-26-91	8-23-90
Control Panel--Layout	5	7-11-89	
" " --Usage List	6	7-26-91	2-15-91
Blower Assembly--Exploded View	7	2-15-91	7-11-89
" " --Usage List	8	2-15-91	7-11-89

\*\*\*\*\*  
\*\*\* IMPORTANT \*\*\*  
\*\*\*\*\*

Contact the installing and/or local Bard distributor for all parts requirements. Make sure you have the complete model and serial number available from the unit rating plate.

CABINET COMPONENTS



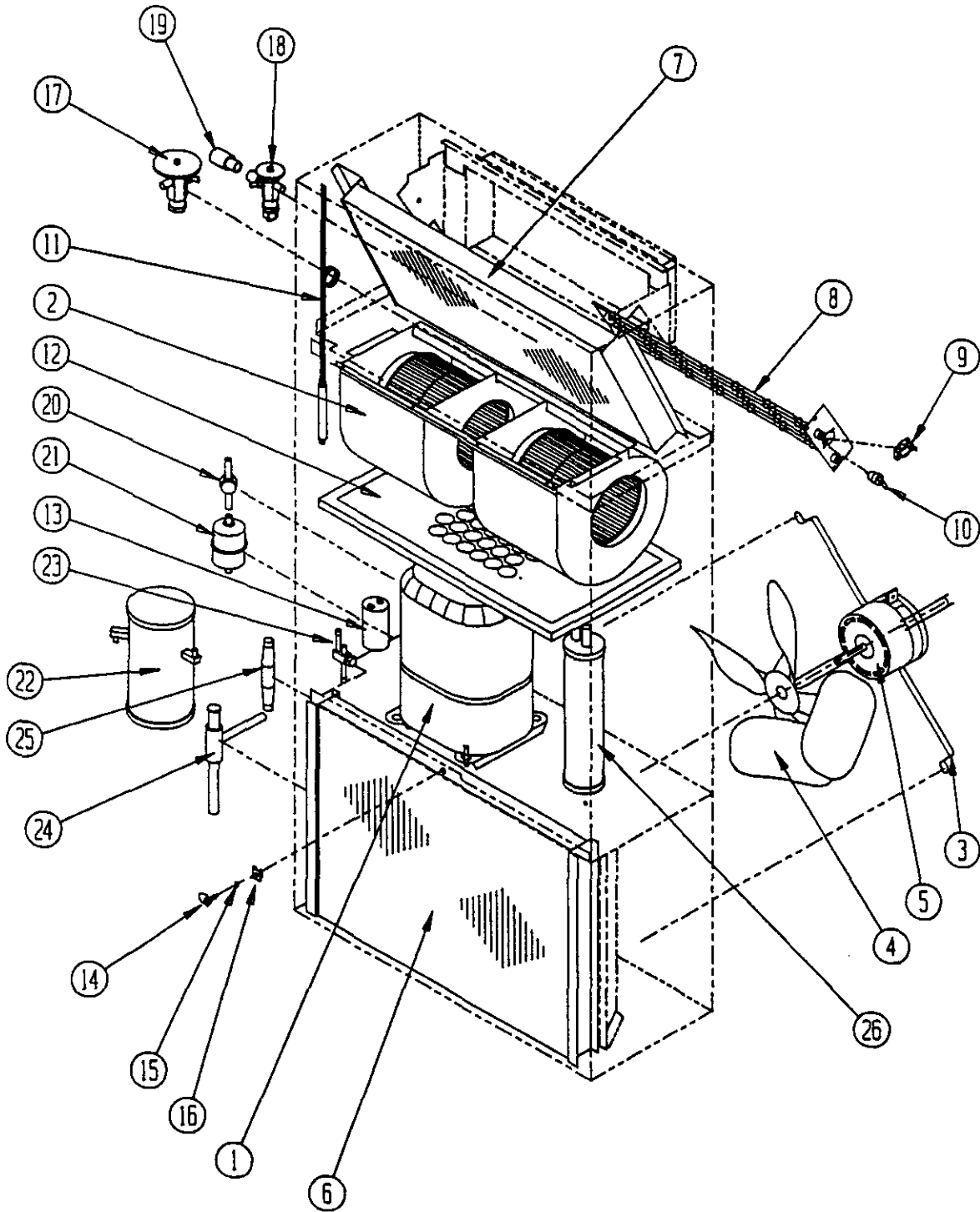
Date: 7-11-89  
Supersedes:

CABINET COMPONENTS

Item No.	Part No.	Description	U S A G E
1	126-001	Lower Base	X
2	124-001	Fan Shroud	X
3	501-162	Right Side Assembly	X
4	501-163	Left Side Assembly	X
5	127-103	Compressor Base	X
6	520-096	Compressor Partition	X
7	130-001	Filter Support	X
8	121-089	Water Pan Assembly	X
9	506-094	Top	X
10	111-028	Supply Air Frame	X
11	508-054	Upper Back	X
12	111-029	Inlet Air Frame	X
13	108-055	Lower Back	X
14	119-002	Side Condenser Grille	X
15	119-001	Front Condenser Grille	X
16	962001	Fresh Air Damper	X
17	552-106	Service Door	X
18	514-045	Upper Front	X
19	542-001	Side Cover Plate	X
20	136-112	Evaporator Bottom Support Fill	X
21	134-004	Air Baffle	X
22	Control Panel Cvr	See Control Panel Assembly Drawing and Parts List	X X
23	Control Panel Asy	See Control Panel Assembly Drawing and Parts List	X X
24	112-002	Side Mounting Bracket	X
25	112-001	Bottom Support Bracket	X

Date: 2-15-91  
Supersedes: 1-25-90

FUNCTIONAL COMPONENTS



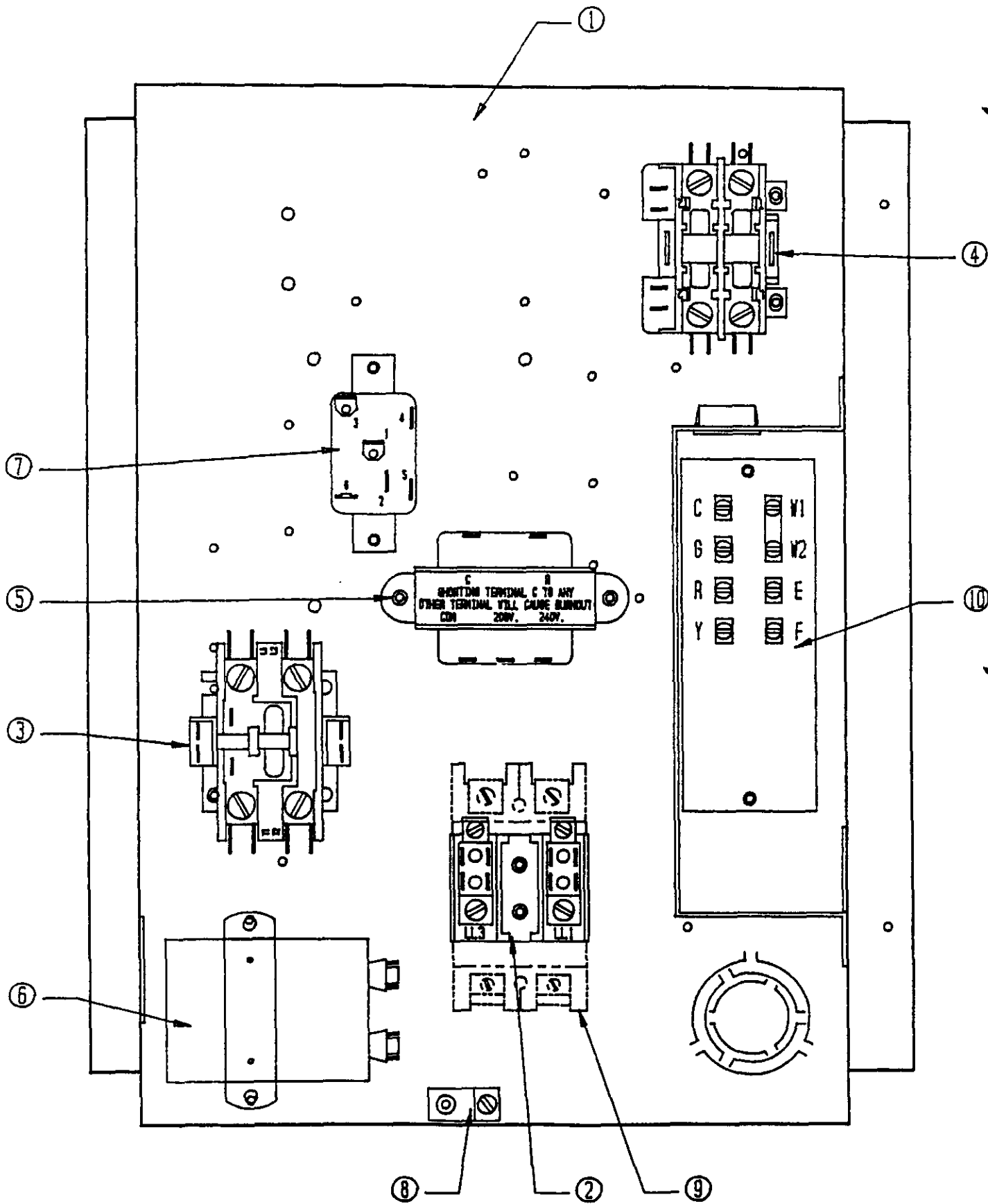
Date: 7-11-89  
Supersedes:

FUNCTIONAL COMPONENTS

Dwg. No.	Part No.	Description	2	2	2	2	2	2	2	2	2	2	2	2	2	2	2
			4	4	4	4	4	4	4	4	4	4	4	4	4	4	4
			W	W	W	W	W	W	W	W	W	W	W	W	W	W	
			A	A	A	A	A	A	A	A	A	A	A	A	A	A	
			6	6	6	6	6	6	6	6	6	6	6	6	6	6	
			A	A	A	A	A	A	A	A	A	A	B	D	D	D	
			0	0	0	1	0	0	0	1	0	0	0	0	0	0	1
			0	5	8	0	0	5	8	0	5	8	9	0	8	0	0
			N	N	N	N	C	C	C	C	H	H	N	N	N	N	
1	8000-112	Compressor												X	X	X	
1	8000-097	Compressor											X				
1	8000-098	Compressor R23B203ABCA	X	X	X	X	X	X	X	X	X	X					
2	900-038	Blower Assembly (Complete)	X	X	X	X	X	X	X	X	X	X	X	X	X	X	
3	8200-023	Motor Mount--Fan	X	X	X	X	X	X	X	X	X	X	X	X	X	X	
4	5151-033	Fan Blade F10H8.7	X	X	X	X	X	X	X	X	X	X	X	X	X	X	
5	8103-016	Motor--Fan 1/5 hp	X	X	X	X	X	X	X	X	X	X	X	X	X	X	
6	5051-036	Condenser Coil	X	X	X	X	X	X	X	X	X	X	X	X	X	X	
7	5060-048	Evaporator Coil	X	X	X	X	X	X	X	X	X	X	X	X	X	X	
8	8604-048	Heat Strip 9KW											1				
8	8604-089	Heat Strip 5KW		1				1				1					
8	8604-090	Heat Strip 8KW			1				1						1		
8	8604-091	Heat Strip 10KW				1				1						1	
9	8402-048	Limit Switch 160 Degrees		X	X	X		X	X	X	X	X			X	X	
10	8402-030	Thermal Cutoff		1	2	2		1	2	2	1	2	2		2	2	
11	800-0085	Capillary Tube Assembly (37-1/2 x .064)	X	X	X	X	X	X	X	X			X	X	X	X	
12	7004-006	Filter 14x25	X	X	X	X	X	X	X	X	X	X	X	X	X	X	
13	8552-027	Capacitor 25/370V	X	X	X	X	X	X	X	X	X				X	X	
13	8552-032	Capacitor 35/370V													X	X	
14	1171-019	1/4 Turn Fastener	X	X	X	X	X	X	X	X	X	X	X	X	X	X	
15	1171-021	Retainer Clip	X	X	X	X	X	X	X	X	X	X	X	X	X	X	
16	1171-020	Fastener Receptacle	X	X	X	X	X	X	X	X	X	X	X	X	X	X	
17	5651-064	Hot Gas Bypass Valve									X	X					
18	5651-038	TXV Expansion Valve									X	X					
19	5651-018	Distributor									X	X					
20	5201-014	Sight Glass									X	X					
21	5201-001	Filter Drier									X	X					
22	5203-004	Receiver									X	X					
23	5651-051	Manual Shut Off Valve									X	X					
24	5651-015	Head Pressure Control Valve									X	X					
25	5651-016	Pressure Differential Valve									X	X					
26	5202-013	Accumulator									X	X					

Date: 7-26-91  
Supersedes: 8-23-90

CONTROL PANEL



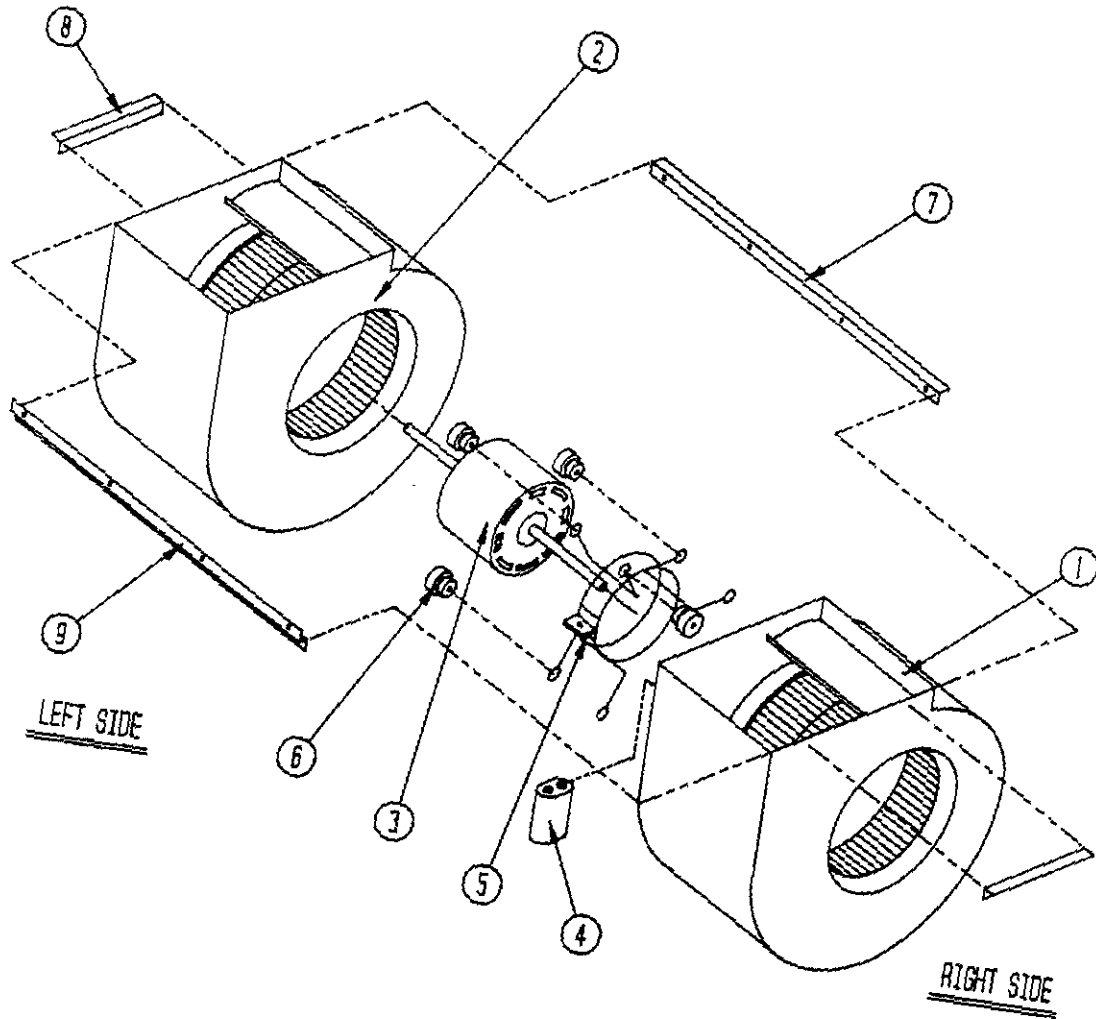
Date: 7-11-89  
Supersedes:

CONTROL PANEL

Dwg. No.	Part No.	Description	2 4 W A 6   A O O N	2 4 W A 6   A O 5 N	2 4 W A 6   A O 8 N	2 4 W A 6   A 1 O N	2 4 W A 6   A O O C	2 4 W A 6   A O 5 C	2 4 W A 6   A O 8 C	2 4 W A 6   A 1 O C	2 4 W A 6   A O 5 H	2 4 W A 6   A O 8 H	2 4 W A 6   B O 9 N	2 4 W A 6   D O O N	2 4 W A 6   D O 8 N	2 4 W A 6   D 1 O N	
	4007-110	Wiring Diagram	X														
	4007-120	Wiring Diagram		X							X						
	4007-130	Wiring Diagram			X	X						X					
	4007-111	Wiring Diagram					X										
	4007-121	Wiring Diagram						X									
	4007-131	Wiring Diagram							X	X							
	4007-220	Wiring Diagram											X				
	4007-410	Wiring Diagram												X			
	4007-430	Wiring Diagram													X	X	
1	902-0249	Complete Control Panel Assembly	X														
1	902-0252	Complete Control Panel Assembly		X								X					
1	902-0256	Complete Control Panel Assembly			X	X							X				
1	902-0251	Complete Control Panel Assembly					X										
1	902-0440	Complete Control Panel Assembly											X				
1	902-0254	Complete Control Panel Assembly						X									
1	902-0257	Complete Control Panel Assembly							X								
1	902-0258	Complete Control Panel Assembly								X							
1	902-0614	Complete Control Panel Assembly													X	X	
1	902-0615	Complete Control Panel Assembly												X			
2	8607-013	Terminal Block 230V		X	X	X						X	X			X	X
2	8607-014	Terminal Block											X				
3	8401-002	Contact--Comp												X			
3	8401-007	Contact--Comp. 25A	X	X	X	X	X	X	X	X	X	X	X		X	X	X
4	8401-006	Contact--Heater 2P18		1	1	1		1	1	1	1	1	1		1	1	
5	8407-034	Transformer 40VA	X	X	X	X	X	X	X	X	X	X	X	X	X	X	X
6	8552-002	Capacitor 5/370V	X	X	X	X	X	X	X	X	X	X	X	X	X	X	X
7	8201-009	Relay--Blower	X	X	X	X	X	X	X	X	X	X	X	X	X	X	X
8	8611-006	Ground Lug	X	X	X	X	X	X	X	X	X	X	X	X	X	X	X
9	8615-012	Circuit Breaker					X										
9	8615-013	Circuit Breaker						X									
9	8615-016	Circuit Breaker								X							
9	8615-010	Circuit Breaker							X								
10	8607-018	Terminal Board 24V	X	X	X	X	X	X	X	X	X	X	X	X	X	X	X
	132-001	Control Panel Cover	X	X	X	X					X	X	X	X	X	X	
	132-068	Control Panel Cover					X	X	X	X							

Date: 7-26-91  
Supersedes: 2-15-91

BLOWER ASSEMBLY



Date: 2-15-91  
Supersedes: 7-11-89



BLOWER ASSEMBLY

Dwg. No.	Part No.	Description	900-038
1	5152-051	Blower Housing And Wheel Assembly	X
2	5152-052	Blower Housing And Wheel Assembly	X
3	8102-009	Blower Motor	X
4	8552-004	Capacitor 7.5/370V	X
5	8200-031	Blower Motor Mount	X
6	5451-011	Grommet	X
7	104-505	Angle Back Brace	X
8	104-001	Angle	X
9	102-300	Offset	X

Date: 2-15-91  
 Supersedes: 7-11-89