

REPLACEMENT PARTS MANUAL

PACKAGED AIR CONDITIONER AND HEAT PUMP
HEATER PACKAGES

MODEL: EH5PB, EH5PC

Manual 2110-307

Revision --

Date 3-10-94

Supersedes

* GENERAL NOTES *

*Revised and/or additional pages may be issued from time to time.
*A complete and current manual consists of pages dated as shown in the following index.

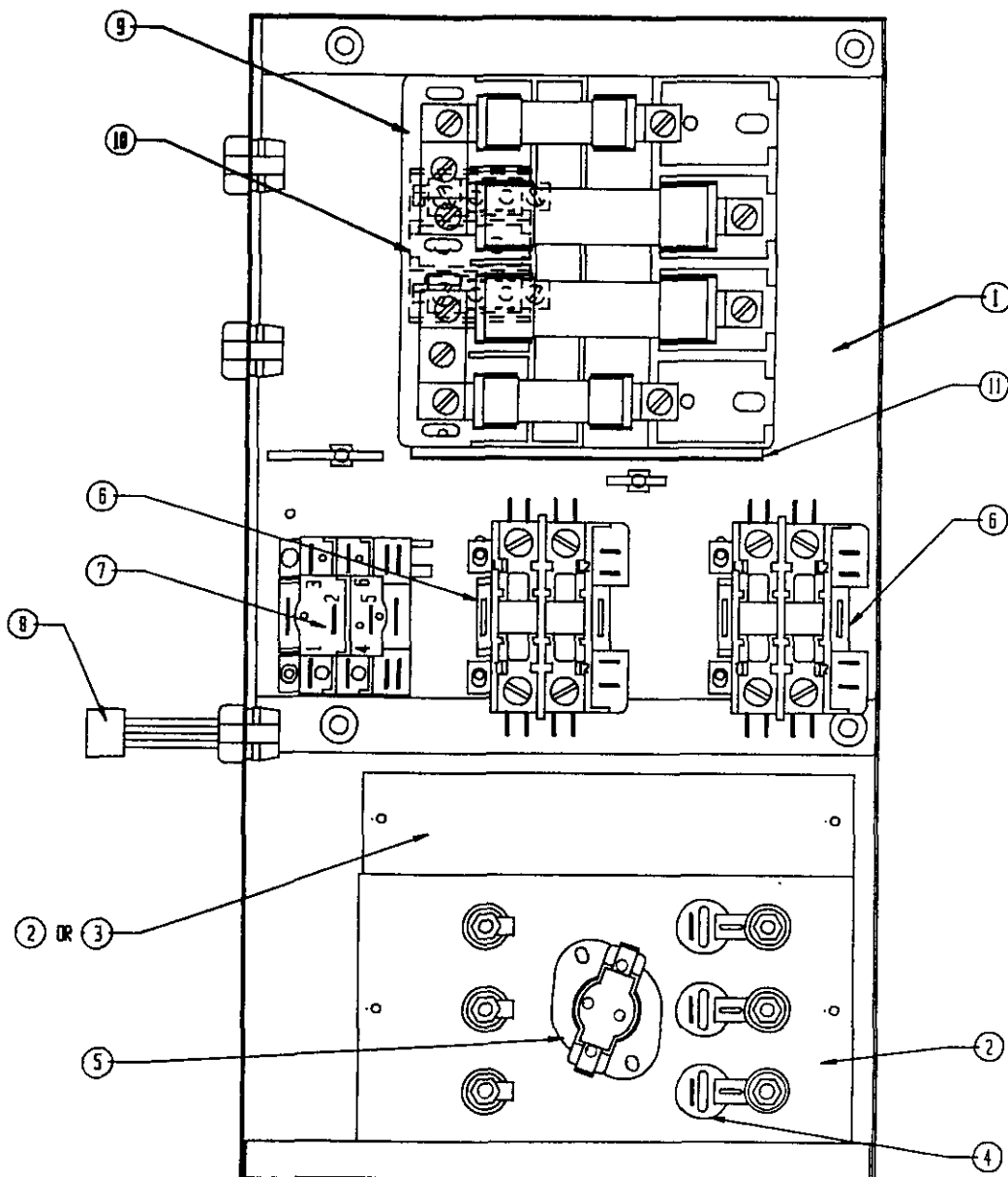
** INDEX **

<u>Page Description</u>	<u>Page</u>	<u>Date</u>	<u>Supersedes</u>
Functional Components--A series--Layout	1	3-10-95	
" " --Usage List	2	3-10-95	
Functional Components--B and C series--Layout	3	3-10-95	
" " --Usage List	4	3-10-95	

*** IMPORTANT ***

Contact the installing and/or local Bard distributor for all parts requirements. Make sure you have the complete model and serial number available from the unit rating plate.

FUNCTIONAL COMPONENTS



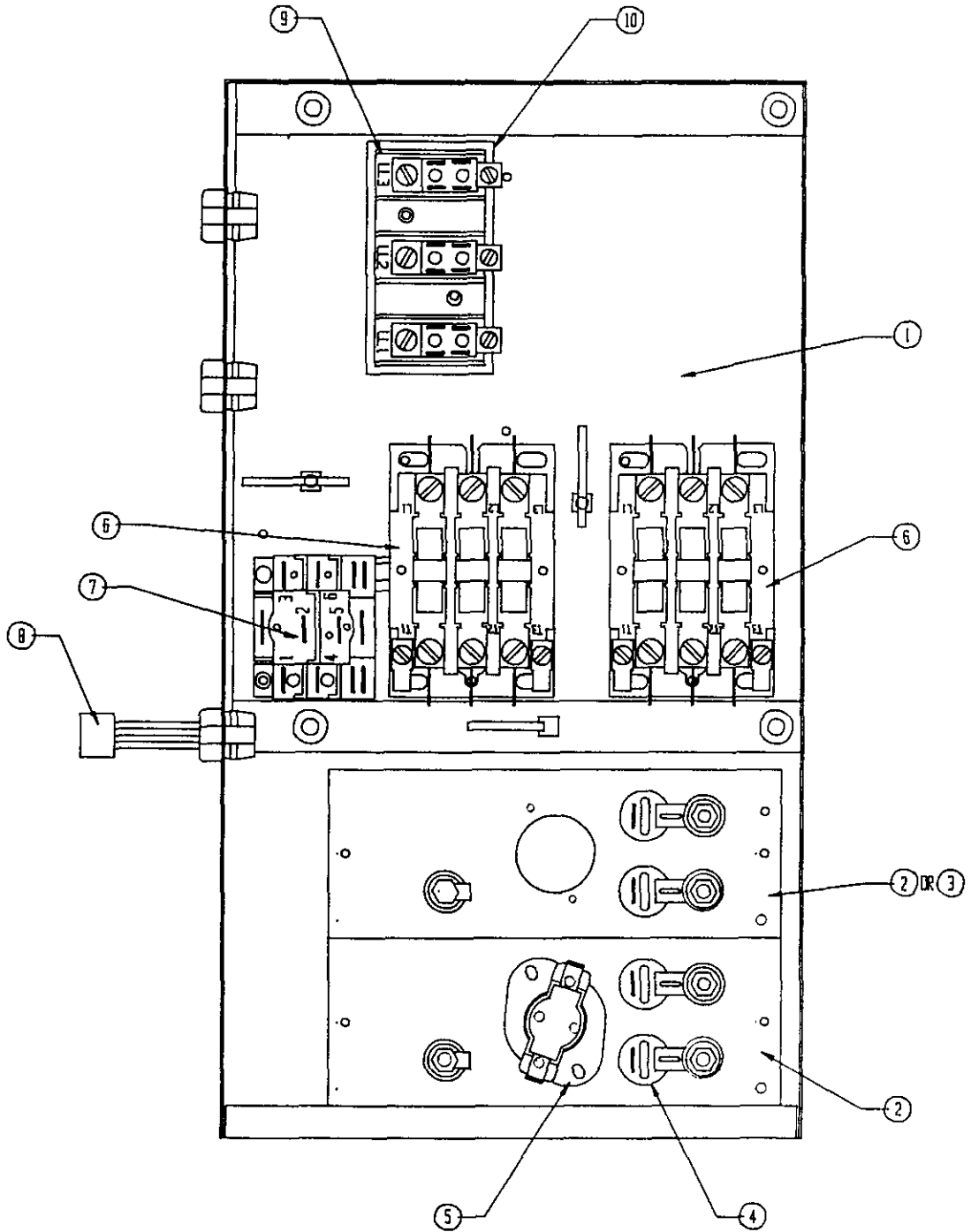
Date: 3-10-95
Supersedes:

FUNCTIONAL COMPONENTS

Dwg. No.	Part No.	Description	E H 5 P B A 0 5	E H 5 P B A 1 0	E H 5 P B A 1 5	E H 5 P B A 2 0
1	117-155	Heater Box Assembly	x	x	x	x
2	8604-089	Heat Strip 5KW 240V	x			
2	8604-095	Heat Strip 10KW 240V		x		2
2	8604-096	Heat Strip 15KW 240V			x	
3	136-091	Fill Plate	x	x		
3	136-253	Fill Plate			x	
4	8402-090	Thermal Cutoff	1	2	3	4
5	8402-081	Limit Control L130-2.5	x			
5	8402-082	Limit Control L145-3.0		x		
5	8402-083	Limit Control L145-3.0 2 Pole			x	x
6	8401-006	Contactora	x	x	2	2
7	8201-032	Blower Relay	x	x	x	x
8	3000-997	Wire Assembly	x	x		
8	3000-998	Wire Assembly			x	x
9	8614-017	Fuse Block			x	
9	8614-018	Fuse Block				x
10	8607-013	Terminal Block	x	x		
11	134-139	Fusing Barrier			x	x
	132-121	Control Panel Cover (not shown)	x	x	x	x
THE FOLLOWING PARTS CONTAINED IN THE PLASTIC BAG						
	8607-013	Terminal Block	x	x	x	x
	8611-006	Ground Terminal	x	x	x	x
	4068-111	Wiring Diagram	x			
	4068-121	Wiring Diagram		x		
	4068-131	Wiring Diagram			x	
	4068-141	Wiring Diagram				x

Date: 3-10-95
Supersedes:

FUNCTIONAL COMPONENTS



Date: 3-10-95
Supersedes:

2110-307
Page: 3

FUNCTIONAL COMPONENTS

Dwg. No.	Part No.	Description	E	E	E	E	E	E
			H	H	H	H	H	H
			5	5	5	5	5	5
			P	P	P	P	P	P
			B	B	B	C	C	C
			B	B	B	C	C	C
			0	1	1	0	1	1
			9	5	8	9	5	8
1	117-155	Heater Box Assembly	x	x	x	x	x	x
2	8604-048	Heat Strip 9KW 240V	x		2			
2	8604-102	Heat Strip 15KW 480V					x	
2	8604-101	Heat Strip 9KW 480V				x		2
2	8604-096	Heat Strip 15KW 240V		x				
3	136-091	Fill Plate	x			x		
3	136-253	Fill Plate		x			x	
4	8402-098	Thermal Limit--One Shot				2	3	4
4	8402-090	Thermal Cutoff	2	3	4			
5	8402-082	Limit Control	x			x	x	
5	8402-083	Limit Control		x	x			x
6	8401-006	Contactator	x	2	2			
6	8401-002	Contactator				x	x	2
7	8201-032	Blower Relay	x	x	x	x	x	x
8	3000-997	Wire Assembly	x			x	x	
8	3000-998	Wire Assembly		x	x			x
9	8607-014	Terminal Block	x	x	x	x	x	x
10	8607-015	Phenolic Insulator				x	x	x
	132-121	Control Panel Cover (not shown)	x	x	x	x	x	x
THE FOLLOWING PARTS CONTAINED IN THE PLASTIC BAG								
	8607-014	Terminal Block	x	x	x	x	x	x
	8611-006	Ground Terminal	x	x	x	x	x	x
	8607-015	Phenolic Insulator				x	x	x
	4068-211	Wiring Diagram	x					
	4068-221	Wiring Diagram		x				
	4068-231	Wiring Diagram			x			
	4068-312	Wiring Diagram				x		
	4068-322	Wiring Diagram					x	
	4068-333	Wiring Diagram						x

Date: 3-10-95
Supersedes:

