

REPLACEMENT PARTS MANUAL

PACKAGED AIR CONDITIONER AND HEAT PUMP  
HEATER PACKAGES

MODEL: EH5PB

Manual 2110-305

Revision --

Date 8-13-93

Supersedes

\*\*\*\*\*  
\* GENERAL NOTES \*  
\*\*\*\*\*

\*Revised and/or additional pages may be issued from time to time.  
\*A complete and current manual consists of pages dated as shown in the following index.

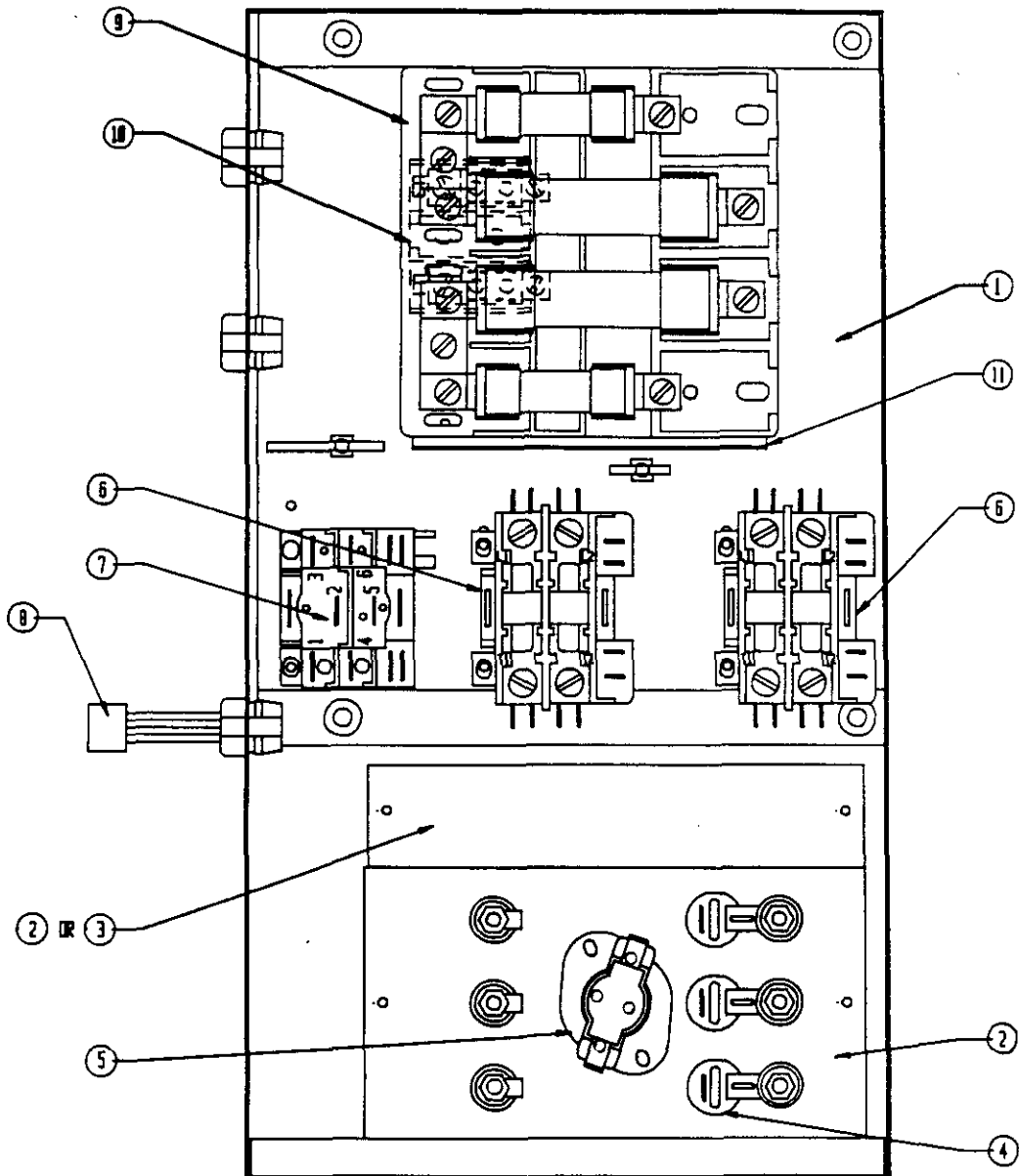
\*\*\*\*\*  
\*\* INDEX \*\*  
\*\*\*\*\*

| <u>Page Description</u>                       | <u>Page</u> | <u>Date</u> | <u>Supersedes</u> |
|---|-------------|-------------|-------------------|
| Functional Components--A series--Layout       | 1           | 8-13-93     |                   |
| " " --Usage List                              | 2           | 8-13-93     |                   |
| Functional Components--B and C series--Layout | 3           | 8-13-93     |                   |
| " " --Usage List                              | 4           | 8-13-93     |                   |

\*\*\*\*\*  
\*\*\* IMPORTANT \*\*\*  
\*\*\*\*\*

Contact the installing and/or local Bard distributor for all parts requirements. Make sure you have the complete model and serial number available from the unit rating plate.

FUNCTIONAL COMPONENTS



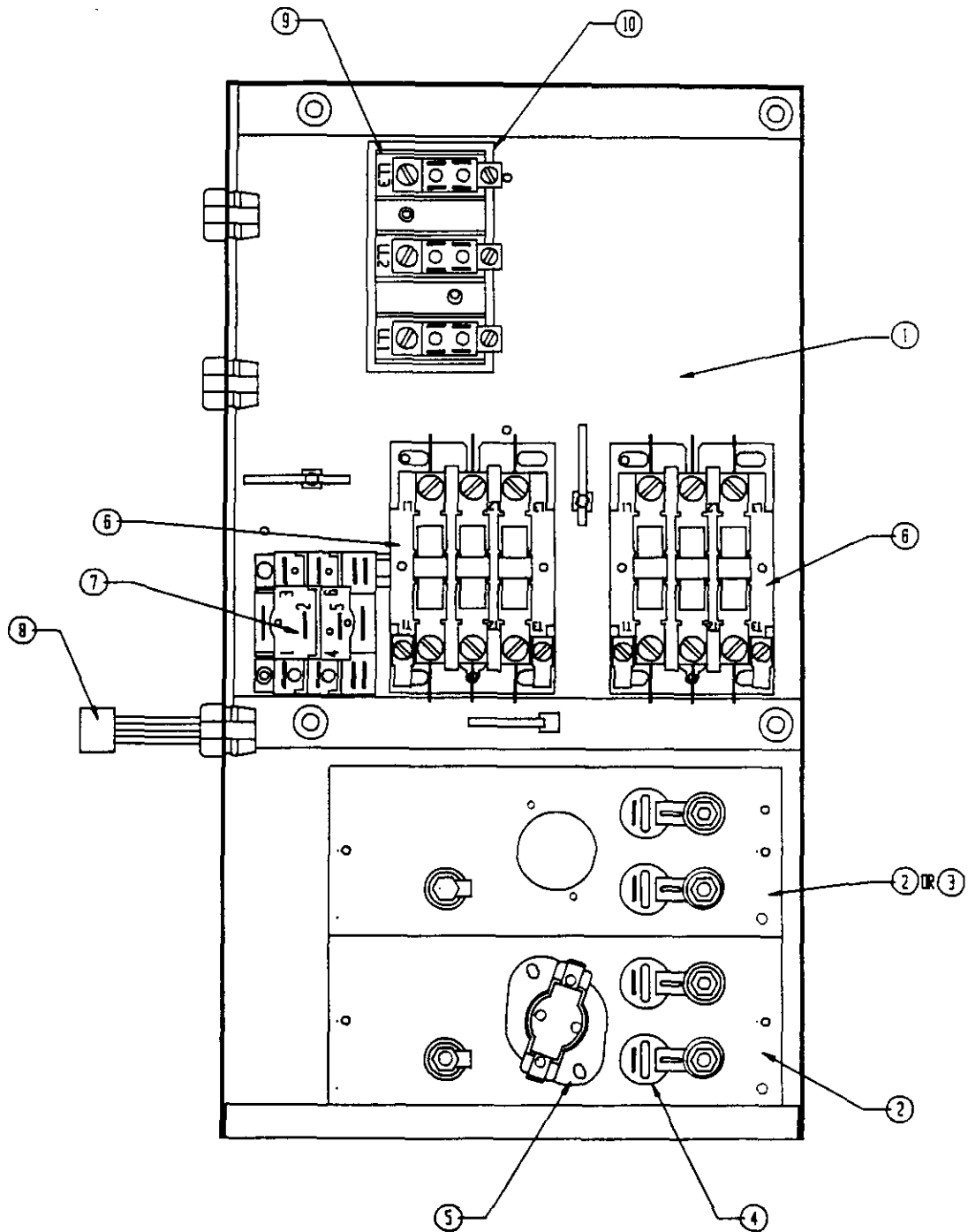
Date: 8-13-93  
Supersedes:

FUNCTIONAL COMPONENTS

| Dwg. No.   | Part No. | Description                     | E<br>H<br>5<br>P<br>B<br> <br>A<br>0<br>5 | E<br>H<br>5<br>P<br>B<br> <br>A<br>1<br>0 | E<br>H<br>5<br>P<br>B<br> <br>A<br>1<br>5 | E<br>H<br>5<br>P<br>B<br> <br>A<br>2<br>0 |
|--|----------|---------------------------------|---|---|---|---|
| 1  | 117-155  | Heater Box Assembly             | x   | x   | x   | x   |
| 2  | 8604-089 | Heat Strip 5KW 240V             | x   |   |   |   |
| 2  | 8604-095 | Heat Strip 10KW 240V            |   | x   |   | 2   |
| 2  | 8604-096 | Heat Strip 15KW 240V            |   |   | x   |   |
| 3  | 136-091  | Fill Plate                      | x   | x   |   |   |
| 3  | 136-253  | Fill Plate                      |   |   | x   |   |
| 4  | 8402-072 | Thermal Cutoff                  | 1   | 2   | 3   | 4   |
| 5  | 8402-081 | Limit Control L130-2.5          | x   |   |   |   |
| 5  | 8402-082 | Limit Control L145-3.0          |   | x   |   |   |
| 5  | 8402-083 | Limit Control L145-3.0 2 Pole   |   |   | x   | x   |
| 6  | 8401-006 | Contactor                       | x   | x   | 2   | 2   |
| 7  | 8201-032 | Blower Relay                    | x   | x   | x   | x   |
| 8  | 3000-997 | Wire Assembly                   | x   | x   |   |   |
| 8  | 3000-998 | Wire Assembly                   |   |   | x   | x   |
| 9  | 8614-017 | Fuse Block                      |   |   | x   |   |
| 9  | 8614-018 | Fuse Block                      |   |   |   | x   |
| 10   | 8607-013 | Terminal Block                  | x   | x   |   |   |
| 11   | 134-139  | Fusing Barrier                  |   |   | x   | x   |
|  | 132-121  | Control Panel Cover (not shown) | x   | x   | x   | x   |
| THE FOLLOWING PARTS CONTAINED IN THE PLASTIC BAG |          |                                 |   |   |   |   |
|  | 8607-013 | Terminal Block                  | x   | x   | x   | x   |
|  | 8611-006 | Ground Terminal                 | x   | x   | x   | x   |
|  | 4068-111 | Wiring Diagram                  | x   |   |   |   |
|  | 4068-121 | Wiring Diagram                  |   | x   |   |   |
|  | 4068-131 | Wiring Diagram                  |   |   | x   |   |
|  | 4068-141 | Wiring Diagram                  |   |   |   | x   |

Date: 8-13-93  
Supersedes:

FUNCTIONAL COMPONENTS



Date: 8-13-93  
Supersedes:

FUNCTIONAL COMPONENTS

| Dwg. No.   | Part No. | Description                     | E<br>H<br>5<br>P<br>B<br> <br>B<br>O<br>9 | E<br>H<br>5<br>P<br>B<br> <br>B<br>1<br>5 | E<br>H<br>5<br>P<br>B<br> <br>B<br>1<br>8 | E<br>H<br>5<br>P<br>B<br> <br>C<br>0<br>9 | E<br>H<br>5<br>P<br>B<br> <br>C<br>1<br>5 | E<br>H<br>5<br>P<br>B<br> <br>C<br>1<br>8 |
|--|----------|---------------------------------|---|---|---|---|---|---|
| 1  | 117-155  | Heater Box Assembly             | X   | X   | X   | X   | X   | X   |
| 2  | 8604-048 | Heat Strip 9KW 240V             | X   |   | 2   |   |   |   |
| 2  | 8604-052 | Heat Strip 15KW 480V            |   |   |   |   | X   |   |
| 2  | 8604-072 | Heat Strip 9KW 480V             |   |   |   | X   |   | 2   |
| 2  | 8604-096 | Heat Strip 15KW 240V            |   | X   |   |   |   |   |
| 3  | 136-091  | Fill Plate                      | X   |   |   | X   |   |   |
| 3  | 136-253  | Fill Plate                      |   | X   |   |   | X   |   |
| 4  | 8402-059 | Thermal Cutoff                  |   |   |   | 2   | 3   | 4   |
| 4  | 8402-072 | Thermal Cutoff                  | 2   | 3   | 4   |   |   |   |
| 5  | 8402-082 | Limit Control                   | X   |   |   | X   | X   |   |
| 5  | 8402-083 | Limit Control                   |   | X   | X   |   |   | X   |
| 6  | 8401-006 | Contactator                     | X   | 2   | 2   |   |   |   |
| 6  | 8401-002 | Contactator                     |   |   |   | X   | X   | 2   |
| 7  | 8201-032 | Blower Relay                    | X   | X   | X   | X   | X   | X   |
| 8  | 3000-997 | Wire Assembly                   | X   |   |   | X   | X   |   |
| 8  | 3000-998 | Wire Assembly                   |   | X   | X   |   |   | X   |
| 9  | 8607-014 | Terminal Block                  | X   | X   | X   | X   | X   | X   |
| 10   | 8607-015 | Phenolic Insulator              |   |   |   | X   | X   | X   |
|  | 132-121  | Control Panel Cover (not shown) | X   | X   | X   | X   | X   | X   |
| THE FOLLOWING PARTS CONTAINED IN THE PLASTIC BAG |          |                                 |   |   |   |   |   |   |
|  | 8607-014 | Terminal Block                  | X   | X   | X   | X   | X   | X   |
|  | 8611-006 | Ground Terminal                 | X   | X   | X   | X   | X   | X   |
|  | 8607-015 | Phenolic Insulator              |   |   |   | X   | X   | X   |
|  | 4068-211 | Wiring Diagram                  | X   |   |   |   |   |   |
|  | 4068-221 | Wiring Diagram                  |   | X   |   |   |   |   |
|  | 4068-231 | Wiring Diagram                  |   |   | X   |   |   |   |
|  | 4068-311 | Wiring Diagram                  |   |   |   | X   |   |   |
|  | 4068-321 | Wiring Diagram                  |   |   |   |   | X   |   |
|  | 4068-331 | Wiring Diagram                  |   |   |   |   |   | X   |

Date: 8-13-93  
Supersedes:

2110-305

