

---

# Replacement Parts Manual

# Split Heat Pumps

**Models:** 24UHPQC, 30UHPQC,  
36UHPQC, 42UHPQC,  
48UHPQB, 48UHPQB-B,  
48UHPQC, 48UHPQC-B,  
60UHPQC, 60UHPQC-B

---

## General Notes

- Revised and/or additional pages may be issued from time to time.
- A complete and current manual consists of pages shown in the following contents section.

## Contents

Description	Page
Functional and Cabinet Components	
• Exploded View .....	1
• Usage List .....	2, 3

## Important

- Contact the installing and/or local Bard distributor for all parts requirements. Make sure you have the complete model and serial number available from the unit rating plates.

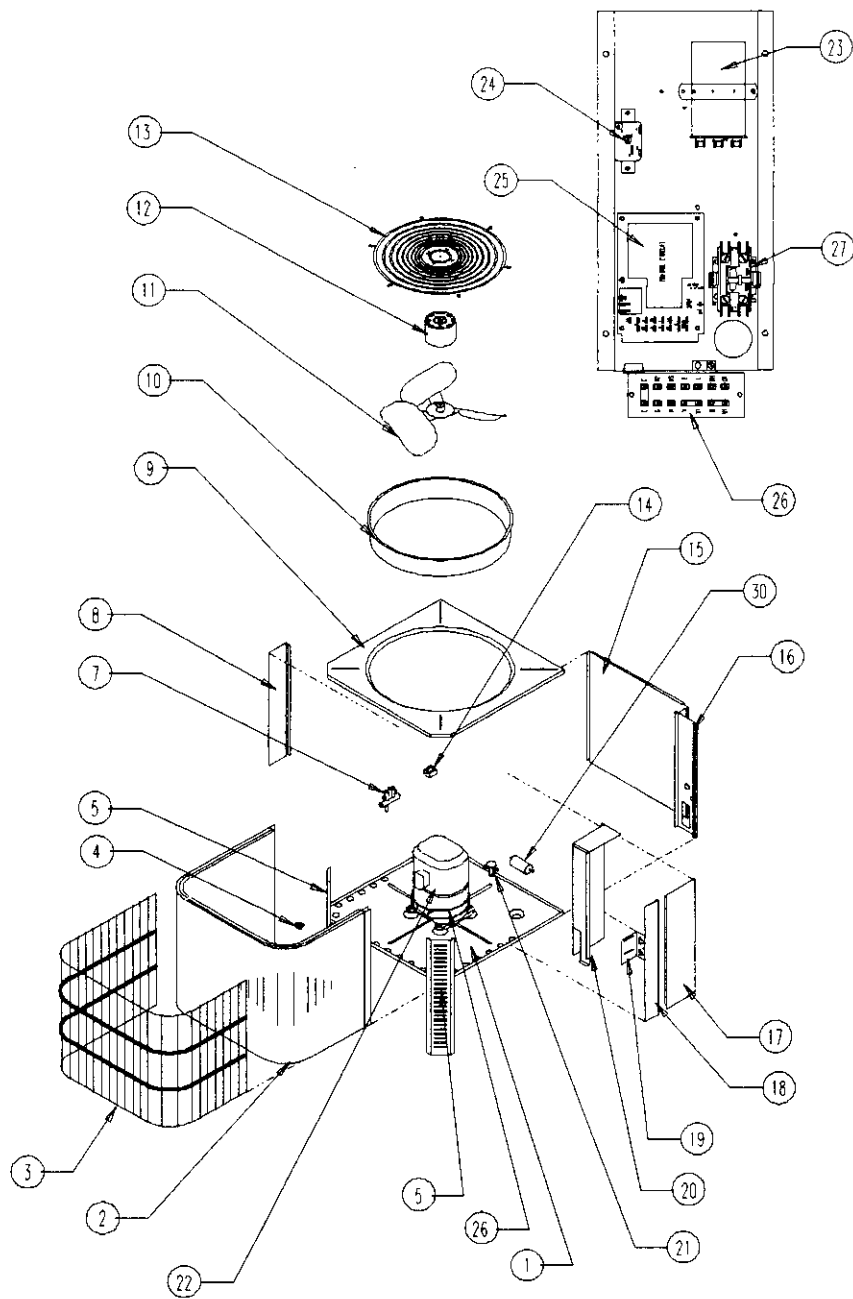


**BARD MANUFACTURING COMPANY**  
Bryan, Ohio 43506

*Since 1914...Moving, ahead just as planned.*

Manual: 2110-055 Rev. I  
File: 2150-004, Tab 5  
Date: 10/15/95

# Functional and Cabinet Components



## Functional and Cabinet Components

Dwg. No.	Part No.	Description	24UHPQC	30UHPQC	36UHPQC	42UHPQC	48UHPQB	48UHPQC	48UHPQB-B	48UHPQC-B	60UHPQC	60UHPQC-B
1	127-114	Base Assembly	.	.	.	.	.	.	.	.	.	.
2	600-0026	Condenser Coil Assembly 5051-060				.	.	.	.	.		
2	600-0027	Condenser Coil Assembly 5051-061									.	.
2	600-0034	Condenser Coil Assembly 5051-086	.	.								
2	600-0035	Condenser Coil Assembly 5051-087			.							
3	7051-019	Coil Grille	.	.	.	.	.	.	.	.		
3	7051-020	Coil Grille									.	.
4	8408-023	Defrost Sensor (See Note C)					.		.			
4	8408-031	Defrost Thermostat 32°/57° (See Note D)				.	.	.	.	.	.	.
4	8408-032	Defrost Thermostat 32°/45°	.	.	.							
5	148-055	Front Corner	.	.	.	.	.	.	.	.		
5	148-058	Front Corner									.	.
7	5650-006	Reversing Valve (See Note A)				.						
7	5650-010	Reversing Valve (See Note A)					.		.			
7	5650-015	Reversing Valve (See Note B)	.	.	.	.						
7	5650-019	Reversing Valve (See Note B)					.		.			
7	5650-025	Reversing Valve						.		.	.	.
8	148-056	Left Rear Corner	.	.	.	.	.	.	.	.		
8	148-059	Left Rear Corner									.	.
9	106-093	Top	.	.	.	.	.	.	.	.	.	.
10	S166-014	Fan Venturi	.	.	.	.	.	.	.	.	.	.
11	5151-036	Fan Blade				.	.	.	.	.		
11	5151-037	Fan Blade									.	.
11	5151-039	Fan Blade	.	.	.							
12	8102-010	Fan Motor 1/6 HP	.	.	.							
12	8104-010	Fan Motor 1/4 HP				.	.	.	.	.		
12	8105-023	Fan Motor 1/3 HP									.	.
13	7051-018	Fan Motor Mount Grille	.	.	.	.	.	.	.	.	.	.
14	5650-008	Reversing Valve Solenoid (See Note A)					.		.			
14	5650-023	Reversing Valve Solenoid (See Note B)	.	.	.	.	.	.	.	.	.	.
15	152-144	Service Door	.	.	.	.	.	.	.	.		
15	152-143	Service Door									.	.
16	148-054	Control Panel Cover	.	.	.	.	.	.	.	.		
16	148-057	Control Panel Cover									.	.
17	132-064	Control Panel Cover	.	.	.	.	.	.	.	.		
17	132-065	Control Panel Cover									.	.
18	100-146	Right Side	.	.	.	.	.	.	.	.		
18	100-147	Right Side									.	.
19	140-144	Quick Connect Support	.	.	.							
19	140-174	Quick Connect Support				.	.	.	.	.	.	.
20	116-094	Control Panel Wrapper	.	.	.	.	.	.	.	.		
20	116-096	Control Panel Wrapper									.	.
21	5651-077	Expansion Valve				.						
21	5651-087	Expansion Valve					.	.	.	.		
21	5651-079	Expansion Valve									.	.
21	5651-120	Expansion Valve	.	.								
21	5651-121	Expansion Valve			.							

NOTE A: For units produced before date code D93.  
 NOTE B: For units produced with date code D93 and after.  
 NOTE C: For units produced before date code E94.  
 NOTE D: For units produced with date code E94 and after.

# Functional and Cabinet Components

Item No.	Part No.	Description	24UHPQC	30UHPQC	36UHPQC	42UHPQC	48UHPQB	48UHPQC	48UHPQB-B	48UHPQC-B	60UHPQC	60UHPQC-B
22	8000-176	Compressor ZR40K3-PFV-230				•						
22	8000-119	Compressor ZR49K2-PFV-230					•					
22	8000-120	Compressor ZR49K2-TF5-230							•			
22	8000-153	Compressor ZR61K3-PFV-230									•	
22	8000-154	Compressor ZR61K3-TF5-230										•
22	8000-170	Compressor ZR22K3-PFV-230	•									
22	8000-172	Compressor ZR28K3-PFV-230		•								
22	8000-175	Compressor ZR34K3-PFV-230			•							
22	8000-188	Compressor ZR49K3-PFV-230						•				
22	8000-189	Compressor ZR49K3-TF5-230										
	8002-005	Compressor Sound Cover										•
	8002-006	Compressor Sound Cover					•	•	•	•		•
23	8552-002	Capacitor 5/370V							•	•		•
23	8552-054	Capacitor 55+5/440V				•						
23	8552-050	Capacitor 40+5/370V	•									
23	8552-052	Capacitor 45+5/370V		•								
23	8552-053	Capacitor 40+5/440V					•					
23	8552-061	Capacitor 80+5/370V									•	
23	8552-062	Capacitor 60+5/370V							•			
23	8552-063	Capacitor 50+5/370V			•							
24	8201-008	Emergency Heat Relay	•	•	•	•	•	•	•	•	•	•
25	8201-068	Heat Pump Control (See Note C)					•		•			
25	8201-072	Heat Pump Control (See Note D)	•	•	•	•	•	•	•	•	•	•
26	8605-012	Crankcase Heater (Wraparound)							•	•		•
26	8607-019	Terminal Strip	•	•	•	•	•	•	•	•	•	•
27	8401-007	Compressor Contactor 25 Amp 1 Pole	•	•	•							
27	8401-016	Compressor Contactor 35 Amp 1 Pole				•	•	•				•
27	8401-027	Compressor Contactor 30 Amp 3 Pole w/ Aux Contact							•	•		•
30	5201-009	Heat Pump Filter Drier	•	•	•	•	•	•	•	•	•	•
33	8406-040	High Pressure Switch	•	•	•	•	•	•	•	•	•	•
	4087-111	Wiring Diagram	•	•	•	•	•	•			•	
	4087-210	Wiring Diagram							•	•		•
	5625-063	Restrictor w/.063" Orifice	•									
	5625-069	Restrictor w/.069" Orifice		•								
	5625-072	Restrictor w/.072" Orifice			•							
	5625-078	Restrictor w/.078" Orifice				•	•	•	•	•		
	5625-092	Restrictor w/.092" Orifice									•	•
	8408-008	Outdoor Terminal	↔ Field Installed ↔									

NOTE A: For units produced before date code D93.  
 NOTE B: For units produced with date code D93 and after.  
 NOTE C: For units produced before date code E94.  
 NOTE D: For units produced with date code E94 and after.