



REPLACEMENT PARTS MANUAL SPLIT HEAT PUMPS

**MODELS: 24UHPQC, 30UHPQC, 36UHPQC,
42UHPQA, 48UHPQB, 48UHPQB-B,
60UHPQB, 60UHPQB-B**

GENERAL NOTES

- * Revised and/or additional pages may be issued from time to time.
- * A complete and current manual consists of pages dated as shown in the following index.

INDEX

PAGE DESCRIPTION	PAGE	DATE	SUPERSEDES
Functional & Cabinet Components—Exploded View	2	05/01/95	10/07/92
Functional & Cabinet Components—Usage List	3	05/01/95	05/15/94
Functional & Cabinet Componanets—Usage List	4	05/01/95	10/07/92

IMPORTANT

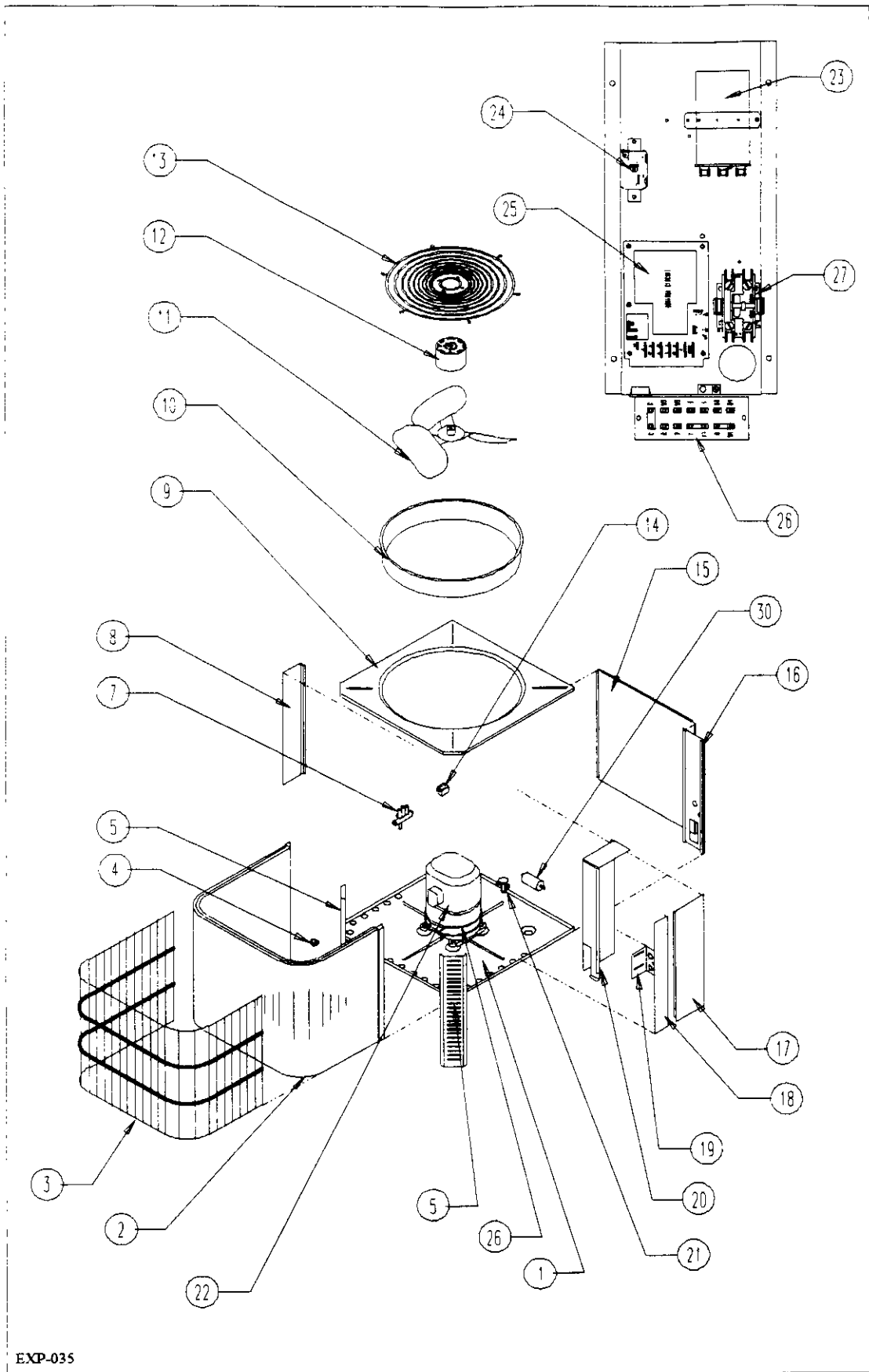
Contact the installing and/or local Bard distributor for all parts requirements. Make sure you have the complete model and serial number available from the unit rating plates.

BARD MANUFACTURING COMPANY
Bryan, Ohio 43506

Since 1914...Moving, ahead just as planned.

Manual:	2110-055 Rev. G
Supersedes:	Rev. F
File:	2150-004, Tab 5

Functional and Cabinet Components



EXP-035

DATE: 10/07/92
SUPERSEDES: 01/01/92
PAGE: 2
MANUAL: 2110-055

Functional and Cabinet Components

Item No.	Part No.	Description	24UHPQC	30UHPQC	36UHPQC	42UHPQA	48UHPQB	48UHPQB-B	60UHPQB	60UHPQB-B
1	127-114	Base Assembly	x	x	x	x	x	x	x	x
2	600-0026	Condenser Coil Assembly 5051-060				x	x	x		
2	600-0027	Condenser Coil Assembly 5051-061							x	x
2	600-0034	Condenser Coil Assembly 5051-086	x	x						
2	600-0035	Condenser Coil Assembly 5051-087			x					
3	7051-019	Coil Grille	x	x	x	x	x	x		
3	7051-020	Coil Grille							x	x
4	8408-023	Defrost Sensor (See Note C)				x	x	x	x	x
4	8408-031	Defrost Thermostat 32°/57° (See Note D)				x	x	x	x	x
4	8408-032	Defrost Thermostat 32°/45°	x	x	x					
5	148-055	Front Corner	x	x	x	x	x	x		
5	148-058	Front Corner							x	x
7	5650-006	Reversing Valve (See Note A)				x				
7	5650-010	Reversing Valve (See Note A)					x	x	x	x
7	5650-015	Reversing Valve (See Note B)	x	x	x	x				
7	5650-019	Reversing Valve (See Note B)					x	x	x	x
8	148-056	Left Rear Corner	x	x	x	x	x	x		
8	148-059	Left Rear Corner							x	x
9	106-093	Top	x	x	x	x	x	x	x	x
10	167-011	Fan Venturi	x	x	x	x	x	x	x	x
11	5151-036	Fan Blade				x	x	x		
11	5151-037	Fan Blade							x	x
11	5151-039	Fan Blade	x	x	x					
12	8102-010	Fan Motor 1/6 HP	x	x	x					
12	8104-009	Fan Motor 1/3 HP				x	x	x		
12	8105-028	Fan Motor 1/2 HP							x	x
13	7051-018	Fan Motor Mount Grille	x	x	x	x	x	x	x	x
14	5650-008	Reversing Valve Solenoid (See Note A)				x	x	x	x	x
14	5650-022	Reversing Valve Solenoid (See Note B)	x	x	x	x	x	x	x	x
15	152-144	Service Door	x	x	x	x	x	x		
15	152-143	Service Door							x	x
16	148-054	Control Panel Cover	x	x	x	x	x	x		
16	148-057	Control Panel Cover							x	x
17	132-064	Control Panel Cover	x	x	x	x	x	x		
17	132-065	Control Panel Cover							x	x
18	100-146	Right Side	x	x	x	x	x	x		
18	100-147	Right Side							x	x
19	140-144	Quick Connect Support	x	x	x					
19	140-174	Quick Connect Support				x	x	x	x	x
20	116-094	Control Panel Wrapper	x	x	x	x	x	x		
20	116-096	Control Panel Wrapper							x	x
21	5651-077	Expansion Valve				x				
21	5651-087	Expansion Valve					x	x		
21	5651-079	Expansion Valve							x	x
21	5651-120	Expansion Valve	x	x						
21	5651-121	Expansion Valve			x					
22	8000-109	Compressor ZR40K1-PFV-230				x				
22	8000-119	Compressor ZR49K2-PFV-230					x			
22	8000-120	Compressor ZR49K2-TF5-230						x		
22	8000-121	Compressor ZR61K2-PFV-230							x	
22	8000-122	Compressor ZR61K2-TF5-230								x
22	8000-170	Compressor ZR22K3-PFV-230	x							
22	8000-172	Compressor ZR28K3-PFV-230		x						
22	8000-175	Compressor ZR34K3-PFV-230			x					

NOTE A: For units produced before date code D93.

NOTE B: For units produced with date code D93 and after.

NOTE C: For units produced before date code E94.

NOTE D: For units produced with date code E94 and after.

DATE: 05/01/95
 SUPERSEDES: 05/15/94
 PAGE: 3
 MANUAL: 2110-055

Functional and Cabinet Components

Item No.	Part No.	Description	24UHPQC	30UHPQC	36UHPQC	42UHPQA	48UHPQB	48UHPQB-B	60UHPQB	60UHPQB-B
	8002-005	Compressor Sound Cover					x	x		
	8002-006	Compressor Sound Cover							x	x
23	8552-002	Capacitor 5/370V						x		x
23	8552-049	Capacitor 35+5/440V				x				
23	8552-050	Capacitor 40+5/370V	x							
23	8552-052	Capacitor 45+5/370V		x						
23	8552-053	Capacitor 40+5/440V					x			
23	8552-054	Capacitor 55+5/440V							x	
23	8552-063	Capacitor 50+5/370V			x					
24	8201-008	Emergency Heat Relay	x	x	x	x	x	x	x	x
25	8201-068	Heat Pump Control (See Note C)				x	x	x	x	x
25	8201-072	Heat Pump Control (See Note D)	x	x	x	x	x	x	x	x
26	8605-012	Crankcase Heater (Wraparound)						x		x
26	8607-019	Terminal Strip	x	x	x	x	x	x	x	x
27	8401-003	Compressor Contactor 30 Amp 1 Pole				x	x			
27	8401-007	Compressor Contactor 25 Amp 1 Pole	x	x	x					
27	8401-016	Compressor Contactor 35 Amp 1 Pole							x	
27	8401-027	Compressor Contactor 30 Amp 3 Pole w/Aux. Contact						x		x
30	5201-009	Heat Pump Filter Drier	x	x	x	x	x	x	x	x
33	8406-040	High Pressure Switch	x	x	x	x	x	x	x	x
	4087-111	Wiring Diagram	x	x	x					
	4087-112	Wiring Diagram				x				
	4087-113	Wiring Diagram					x		x	
	4087-210	Wiring Diagram						x		x
	5625-063	Restrictor w/.063" orifice	x							
	5625-069	Restrictor w/.069" orifice		x						
	5625-072	Restrictor w/.072" orifice			x					
	5625-078	Restrictor w/.078" orifice				x	x	x		
	5625-092	Restrictor w/.092" orifice							x	x
	8408-008	Outdoor Thermostat	FI	FI	FI	FI	FI	FI	FI	FI

FI = Field Installed

DATE: 05/01/95
 SUPERSEDES: 10/07/92
 PAGE: 4
 MANUAL: 2110-055