

INSTALLATION INSTRUCTIONS

WALL MOUNTED PACKAGE AIR CONDITIONERS

**MODEL
WA121**

DATE: 05-15-96

**MANUAL 2100-234 REV. C
SUPERSEDES REV. B
FILE VOL. III, TAB 16**

SECTION 1 --GETTING OTHER INFORMATION AND PUBLICATIONS

These publications can help you install the air conditioner or heat pump. You can usually find these at your local library or purchase them directly from the publisher. Be sure to consult current edition of each standard.

National Electrical Code	-ANSI/NFPA 70
Standard For The Installation Of Air Conditioning and Ventilating Systems	-ANSI/NFPA 90A
Standard For Warm Air Heating and Air Conditioning Systems	-ANSI/NFPA 90B
Load Calculation For Residential Winter and Summer Air Conditioning	-ACCA Manual J
Duct Design For Residential Winter and Summer Air Conditioning and Equipment Selection	-ACCA Manual D

FOR MORE INFORMATION, CONTACT THESE PUBLISHERS

ACCA:	AIR CONDITIONING CONTRACTORS OF AMERICA 1513 16th Street NW Washington, DC 20036 Telephone: (202) 483-9370	Fax: (202) 234-4721
ANSI:	AMERICAN NATIONAL STANDARDS INSTITUTE 11 West Street, 13th Floor New York, NY 10036 Telephone: (212) 642-4900	Fax: (212) 302-1286
ASHRAE:	AMERICAN SOCIETY OF HEATING REFRIGERATING AND AIR CONDITIONING ENGINEERS, INCORPORATED 1791 Tullie Circle, N.E. Atlanta, GA 30329-2305 Telephone: (404) 636-8400	Fax: (404) 321-5478
NFPA:	NATIONAL FIRE PROTECTION ASSOCIATION Batterymarch Park P. O. Box 9101 Quincy, MA 02269-9901 Telephone: (800) 344-3555	Fax: (617) 984-7057

Manufactured under U.S. patent number 5,301,744.
Other patents pending.

COPYRIGHT MAY, 1996
BARD MANUFACTURING COMPANY
BRYAN, OH 43506 USA

TABLE OF CONTENTS

PART 1 -- WALL MOUNT--GENERAL INSTALLATION INFORMATION

Air Conditioner Wall Mount Model Nomenclature	1
Shipping Damage	1
General	4
Duct Work	4
Filters	4
Fresh Air Intake	5
Condensate Drain	5

PART 2 -- INSTALLATION

Wall Mounting Information	6
Mounting The Unit	6

WIRING

Wiring--Main Power	10
Wiring: Low Voltage Wiring	10

PART 3 -- START-UP

Important Installer Note	12
Service Hints	12
Sequence of Operation	12
Pressure Service Ports	12

PART 4 -- TROUBLESHOOTING

Fan Blade Setting Dimensions	12
Refrigerant Charge	13
Pressure Tables	14
Optional Accessories	14

FIGURES AND TABLES

Figure 1	Unit Dimensions	2
Figure 2	Fresh Air Damper Assembly	5
Figure 3	Mounting Locations	7
Figure 4	Wall-Mounting Instructions	8
Figure 5	Wall-Mounting Instructions	8
Figure 6	Common Wall-Mounting Installations	9
Figure 7	Unit 24V Terminal Board	11
Figure 8	Fan Blade Setting	12

Table 1	Electric Heat Table	1
Table 2	Electrical Specifications	3
Table 3	Thermostat Wire Sizes	10
Table 3A	Wall Thermostat and Subbase Combinations.	10
Table 4	Fan Blade Setting	12
Table 5	Refrigerant Charge	13
Table 6	Indoor Blower Performance	13
Table 7	Recommended Operating Ranges	13
Table 8	Maximum ESP of Operation	13
Table 9	Cooling--Pressure (PSI)	14
Table 10	Optional Accessories	14

PART 1 -- WALL MOUNT GENERAL INFORMATION

AIR CONDITIONER WALL MOUNT MODEL NOMENCLATURE

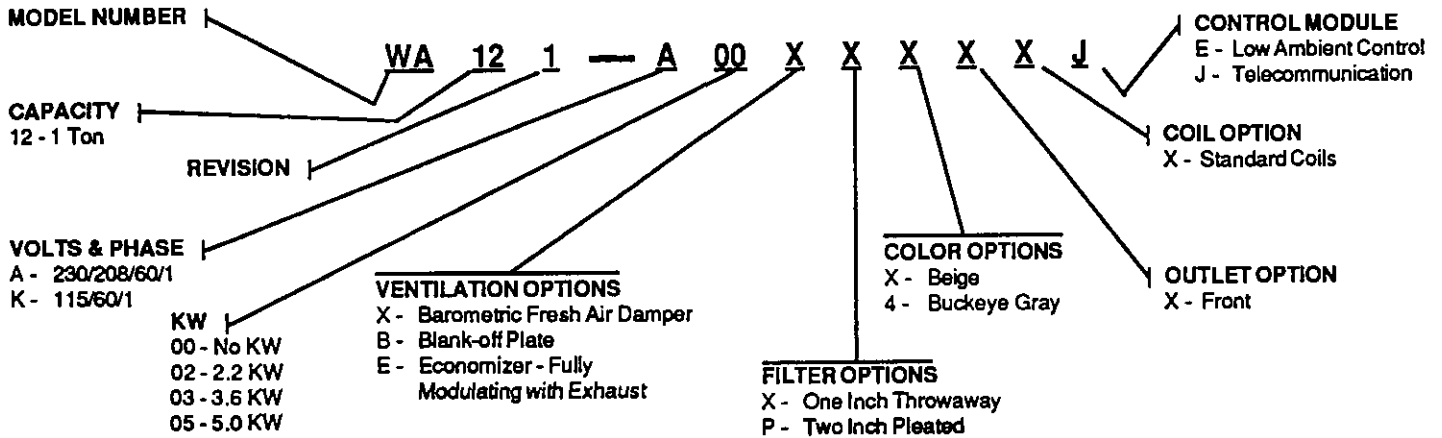


TABLE 1 ELECTRIC HEAT TABLE

Models	WA121-A						WA121-K	
	240-1V		208-1V		120V			
	KW	A	BTU	A	BTU	A	BTU	
03	15.0	12285	13.0	9230				
05	20.8	17065	18.1	12800				
02					18.3	7510		

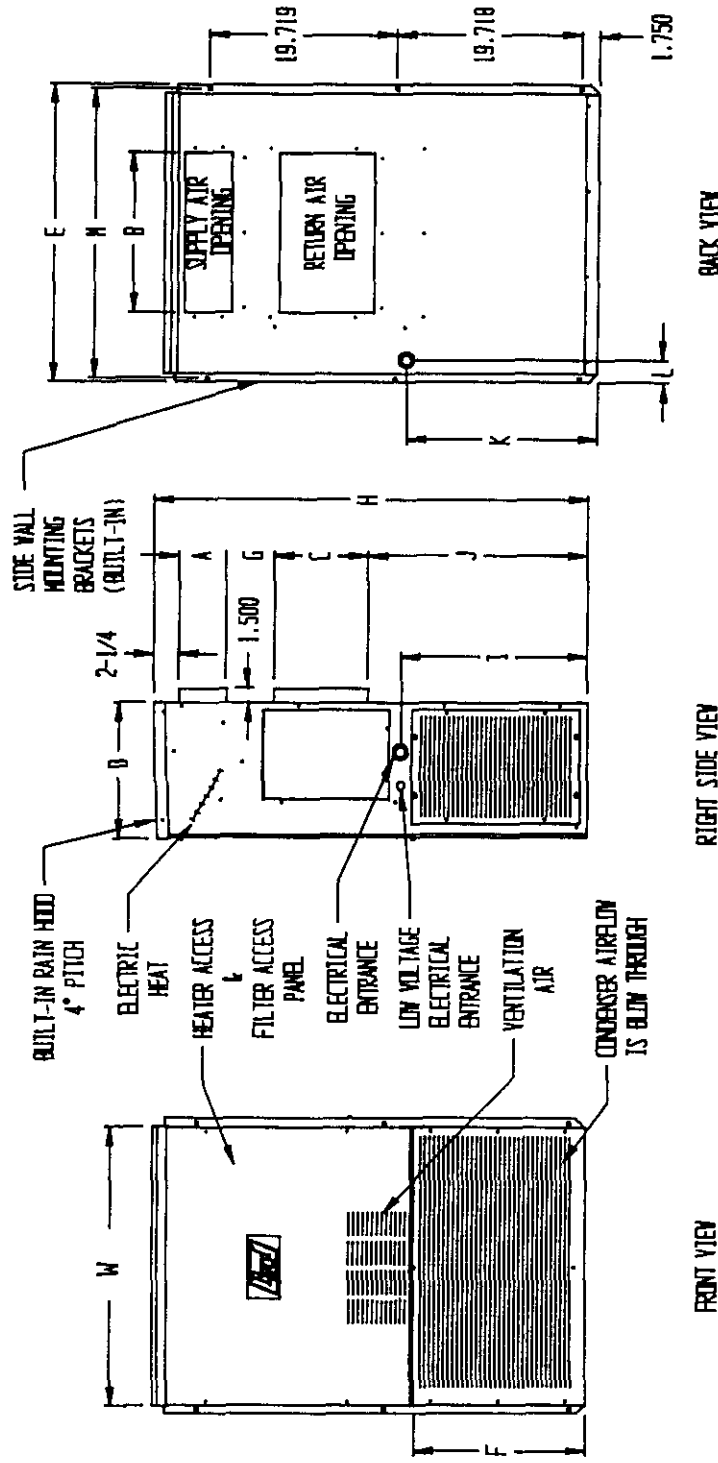
SHIPPING DAMAGE

Upon receipt of equipment, the carton should be checked for external signs of shipping damage. If damage is found, the receiving party must contact the last carrier immediately, preferably in writing, requesting inspection by the carrier's agent.

FIGURE 1
UNIT DIMENSIONS

SIZE SPECS FOR MTS-500

UNIT	WIDTH (W)	DEPTH (D)	HEIGHT (H)	SUPPLY		RETURN		E	F	G (*)	I	J (*)	K	L	M
				A	B	C	B								
MA121	30-1/8	14-5/8	46	5	17	10	17	32	18-1/4	2 OR 5	19-7/8	23-3/4 OR 26-3/4	20-1/4	2-1/2	31-1/16



(*) POSITION OF RETURN AIR FLANGES ARE INTERCHANGEABLE BETWEEN TWO POSITIONS. FACTORY BUILT AT 5 INCHES.

TABLE 2

SINGLE CIRCUIT						
Model	Rated Volts and Phase	No. Field Power Ckts.	(3) Minimum Circuit Ampacity	(1) Maximum External Fuse Or Circuit Breaker	(2) Field Power Wire Size	(2) Ground Wire Size
WA121-A00	230/208-1	1	8	15	14	14
A03		1	20	20	12	12
A05		1	27	30	10	10
WA121-K00	115-1	1	17	25	10	10
K02		1	25	30	10	10

(1) Maximum size of the time delay fuse or HACR type circuit breaker for protection of field wiring conductors.

(2) Based on 75°C copper wire. All wiring must conform to NEC and all local codes.

(3) These "Minimum Circuit Ampacity" values are to be used for sizing the field power conductors. Refer to the National Electrical Code (latest revision), article 310 for power conductor sizing. Caution: When more than one field power conductor circuit is run thru one conduit, the conductors must be derated. Pay special attention to note 8 of table 310 regarding Ampacity Adjustment Factors when more than 3 conductors are in a raceway.

GENERAL

The equipment covered in this manual is to be installed by trained, experienced service and installation technicians.

The refrigerant system is completely assembled and charged. All internal wiring is complete.

The unit is designed for use with or without duct work. Flanges are provided for attaching the supply and return ducts.

These instructions explain the recommended method to install the air cooled self-contained unit and the electrical wiring connections to the unit.

These instructions and any instructions packaged with any separate equipment required to make up the entire air conditioning system should be carefully read before beginning the installation. Note particularly "Starting Procedure" and any tags and/or labels attached to the equipment.

While these instructions are intended as a general recommended guide, they do not supersede any national and/or local codes in any way. Authorities having jurisdiction should be consulted before the installation is made. See Page 1 for information on codes and standards.

Size of unit for a proposed installation should be based on heat loss calculation made according to methods of Air Conditioning Contractors of America (ACCA). The air duct should be installed in accordance with the Standards of the National Fire Protection Association for the Installation of Air Conditioning and Ventilating systems of Other Than Residence Type, NEPA No. 90A, and Residence Type Warm Air Heating and Air Conditioning Systems, NEPA No. 90B. Where local regulations are at a variance with instructions, installer should adhere to local codes.

DUCT WORK

All duct work, supply and return, must be properly sized for the design air flow requirement of the equipment. Air Conditioning Contractors of America (ACCA) is an excellent guide to proper sizing. All duct work or portions thereof not in the conditioned space should be properly insulated in order to both conserve energy and prevent condensation or moisture damage.

Refer to Table 8 for maximum static pressure available for duct design.

Design the duct work according to methods given by the Air Conditioning Contractors of America (ACCA). When duct runs through unheated spaces, it should be insulated with a minimum of one inch of insulation. Use insulation with a vapor barrier on the outside of the insulation. Flexible joints should be used to connect the duct work to the equipment in order to keep the noise transmission to a minimum.

Ducts through the walls must be insulated and all joints taped or sealed to prevent air or moisture entering the wall cavity.

Some installations may not require any return air duct. It is recommended that on this type of installation that a filter grille be located in the wall. Filters must be of sufficient size to allow a maximum velocity of 400 FPM.

NOTE: If no return air duct is used, applicable installation codes may limit this cabinet to installation only in a single story structure.

FILTERS

A 1-inch throwaway filter is supplied with each unit. The filter slides into position making it easy to service. This filter can be serviced from the outside by removing the service door. A 2-inch pleated filter is also available as an optional accessory. The internal filter brackets are adjustable to accommodate the 2-inch filter by loosening 2 screws in each bracket assembly and sliding the brackets apart to the required width and retightening the 4 screws.

FRESH AIR INTAKE

All units are built with a fresh air inlet slots punched in the service panel.

If the unit is equipped with a fresh air damper assembly, the assembly is shipped already attached to the unit. The damper blade is locked in the closed position. To allow the damper to operate, the maximum and minimum blade position stops must be installed. See Figure 2.

All capacity, efficiency and cost of operation information as required for Department of Energy "Energyguide" Fact Sheets is based upon the fresh air blank-off plate in place and is recommended for maximum energy efficiency.

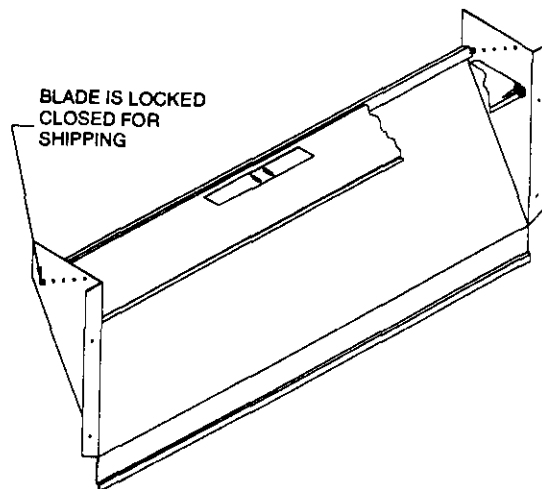
The blank-off plate is available upon request from the factory and is installed in place of the fresh air damper shipped with each unit.

CONDENSATE DRAIN

This unit employs an automatic condensate disposal system consisting of a base drain pan, drain valve and fan blade with slinger ring. A plastic drain hose extends from the evaporator drain pan at the top of the unit to the base drain pan at the bottom. At temperatures above 40°, the drain valve located between the condenser coil and fan shroud is closed allowing water to build up in the base to a height of 5/8" to 3/4". The fan blade with slinger then rotates in this water and throws the water onto the condenser coil. This disposes of the water by evaporating it on the hot condenser.

At temperatures below 40°, the drain valve opens draining the base pan and preventing freeze ups that could damage the coil or fan blade.

Figure 2



PART 2 -- INSTALLATION INSTRUCTIONS

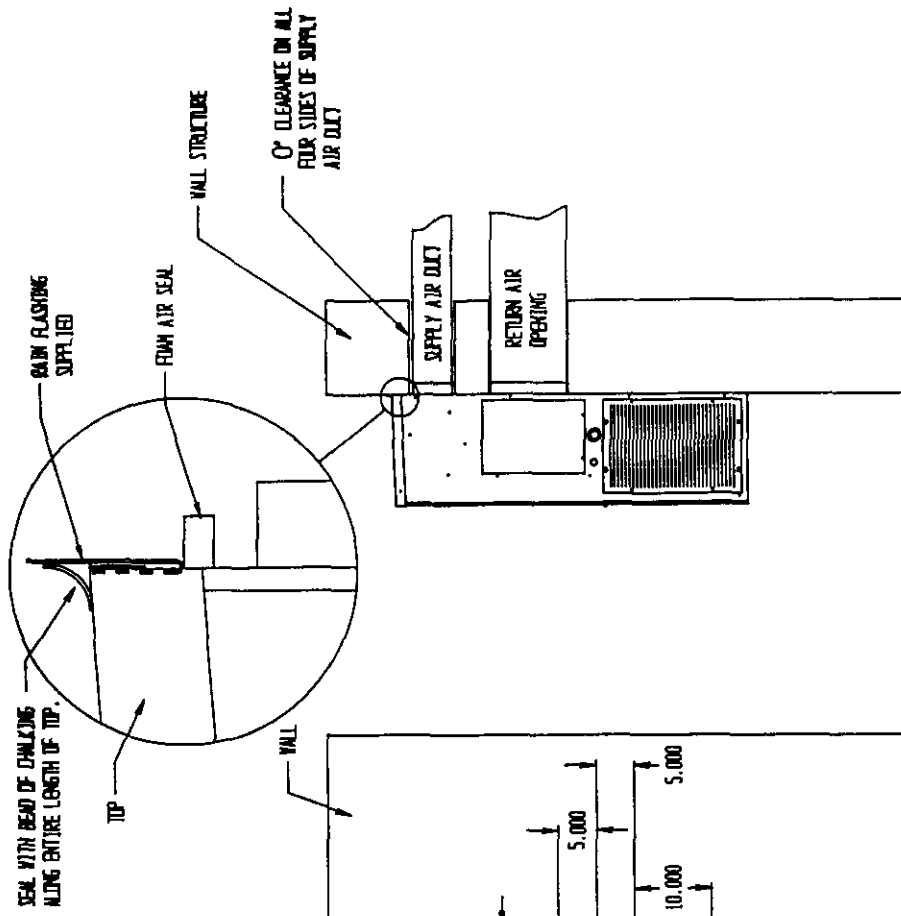
WALL MOUNTING INFORMATION

1. These units are secured by wall mounting brackets which secure the unit to the outside wall surface at both sides.
2. On wood-frame walls, the wall construction must be strong and rigid enough to carry the weight of the unit without transmitting any unit vibration.
3. Concrete block walls must be thoroughly inspected to insure that they are capable of carrying the weight of the installing unit.

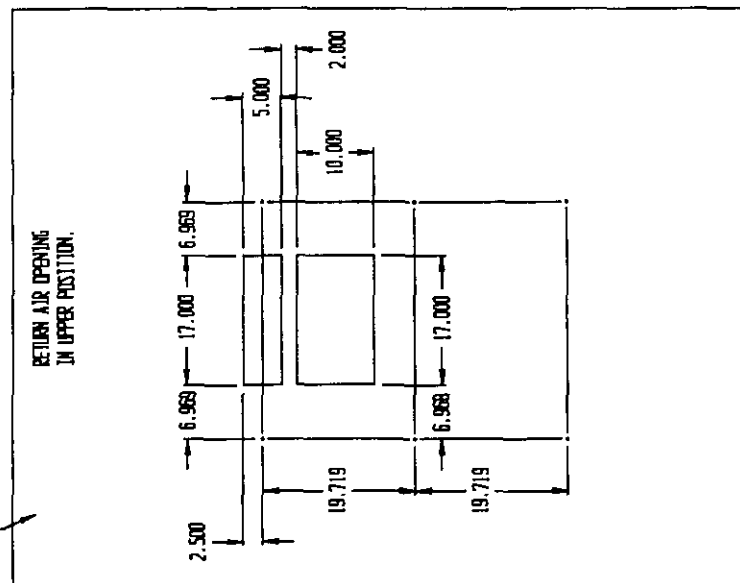
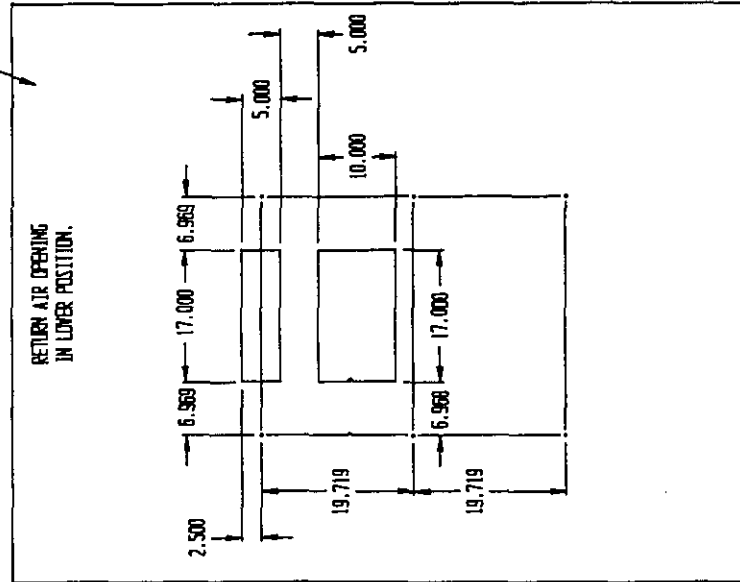
MOUNTING THE UNIT

1. Two holes, for the supply and return air openings, must be cut through the wall as shown in Figure 3.
2. Locate and mark lag bolt locations and bottom mounting bracket location, if desired. See Figure 3.
3. Hook top rain flashing under back bend of top. Top rain flashing is shipped attached to the back of the unit on the right side.
4. Position unit in opening and secure with 5/16 lag bolts; use 7/8 inch diameter flat washers on the lag bolts.
5. Secure rain flashing to wall and caulk across entire length of top. See Figure 3.
6. For additional mounting rigidity, the return air and supply air frames or collars can be drilled and screwed or welded to the structural wall itself (depending upon wall construction). Be sure to observe required clearance if combustible wall.
7. On side by side installations, maintain a minimum of 20 inches clearance on right side to allow access to control panel and allow proper airflow to outdoor coil. Additional clearance may be required to meet local or national codes.

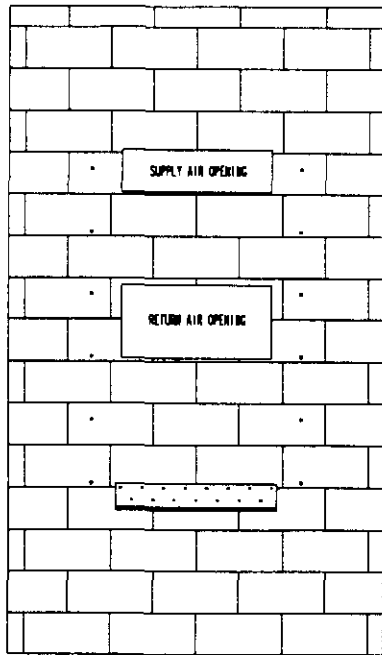
FIGURE 3
MOUNTING INSTRUCTIONS



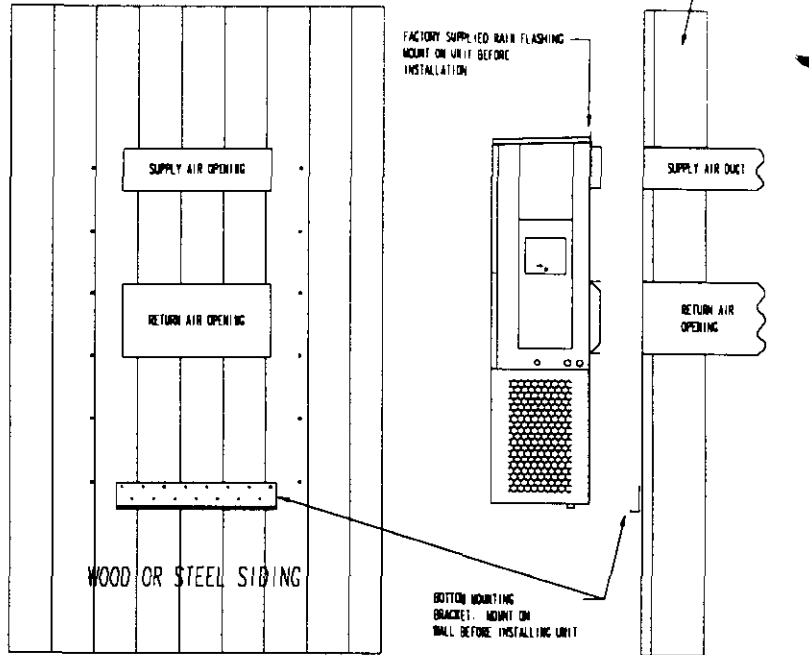
NOTE:
IT IS RECOMMENDED THAT A BEAD OF SILICONE
CAULKING BE PLACED BEHIND THE SIDE MOUNTING
FLANGES AND UNDER TOP FLASHING AT TIME OF
INSTALLATION.



SEE FIGURE 3 - MOUNTING INSTRUCTIONS



CONCRETE BLOCK WALL INSTALLATION



WOOD FRAME WALL INSTALLATION

Figure 4 – Wall-Mounting Instructions

SEE UNIT DIMENSIONS, FIGURE 1, FOR ACTUAL DIMENSIONS

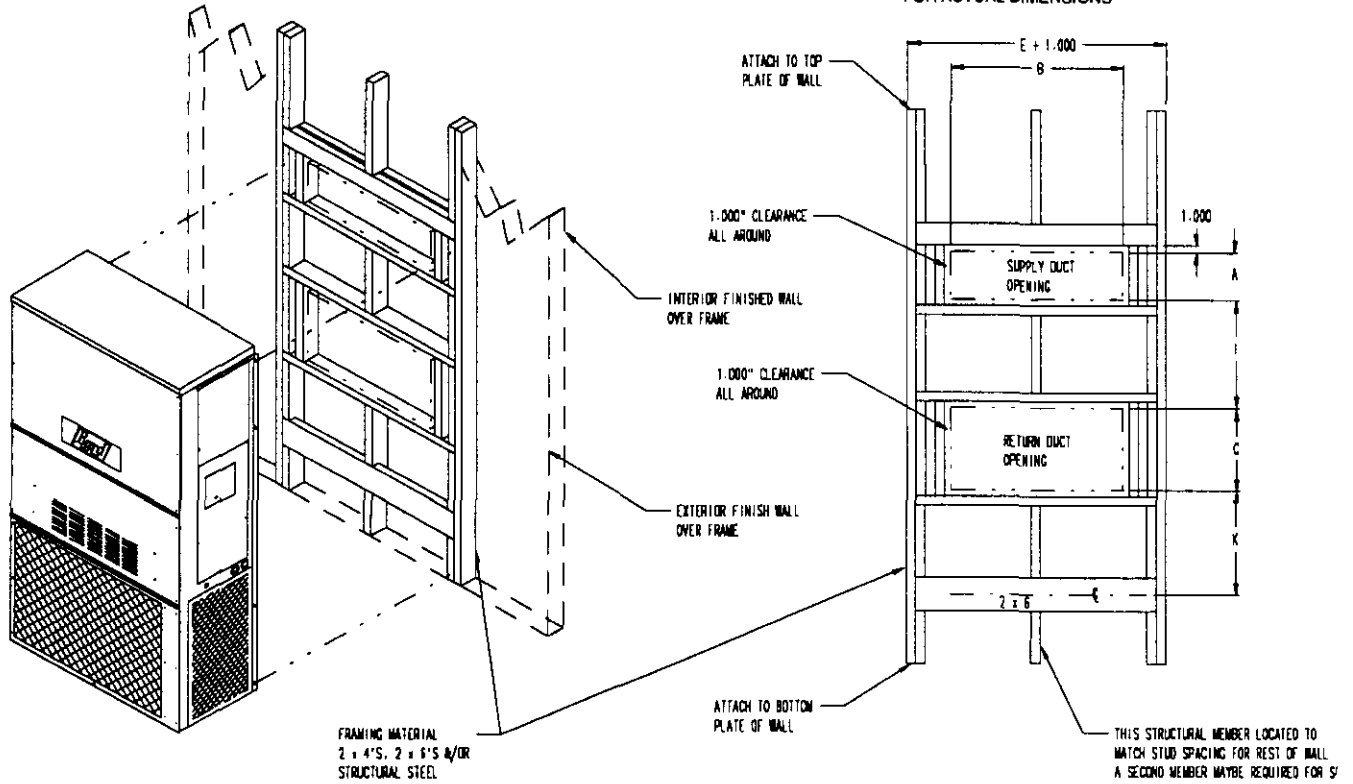
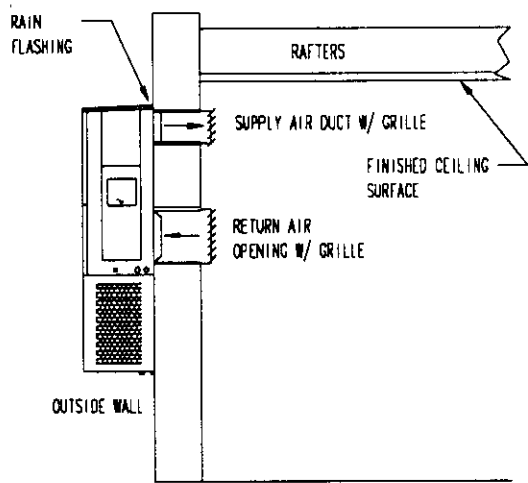
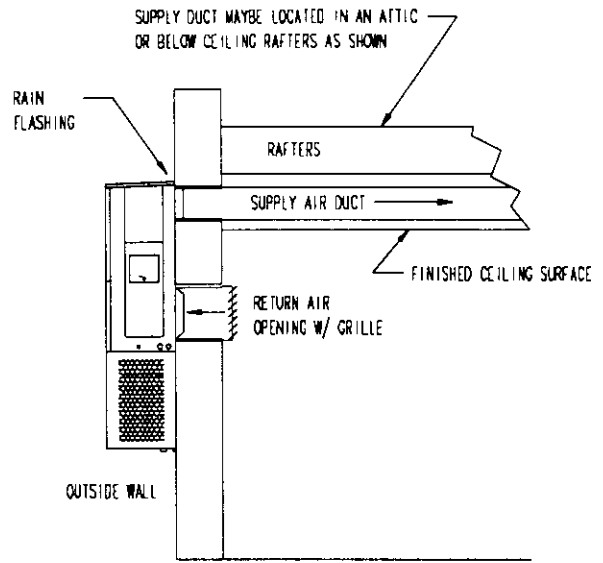


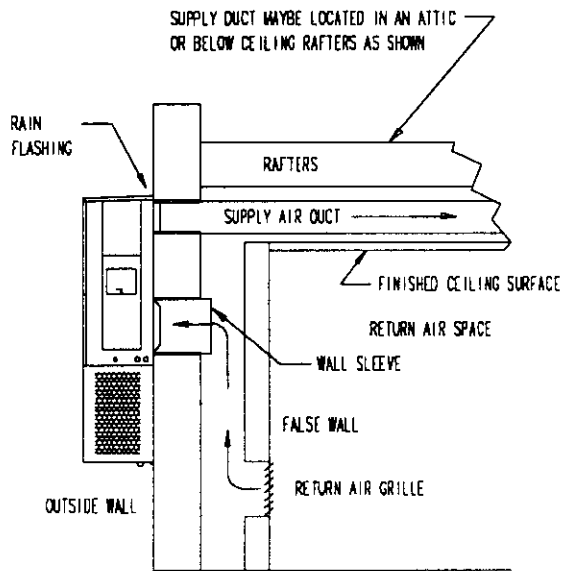
Figure 5 – Wall-Mounting Instructions



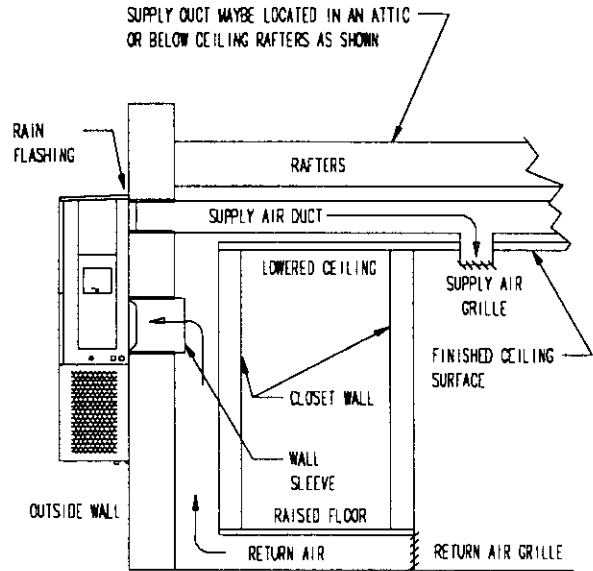
FREE AIR FLOW
NO DUCT



DUCTED SUPPLY
RETURN AT UNIT



FALSE WALL INSTALLATION



CLOSET INSTALLATION

Figure 6 — Common Wall-Mounting Installations

WIRING--MAIN POWER

Refer to the unit rating plate for wire sizing information and maximum fuse or "BACR Type" circuit breaker size. Each outdoor unit is marked with a "Minimum Circuit Ampacity". This means that the field wiring used must be sized to carry that amount of current. Depending on the installed KW of electric heat, there may be two field power circuits required. If this is the case, the unit serial plate will so indicate. All models are suitable only for connection with copper wire. Each unit and/or wiring diagram will be marked "Use Copper Conductors Only". These instructions MUST BE adhered to. Refer to the National Electrical Code (NEC) for complete current carrying capacity data on the various insulation grades of wiring material. All wiring must conform to NEC and all local codes.

The electrical data lists fuse and wire sizes (75°C copper) for all models, including the most commonly used heater sizes. Also shown are the number of field power circuits required for the various models with heaters.

The unit rating plate lists a "Maximum Time Delay Relay Fuse" or "BACR Type" circuit breaker that is to be used with the equipment. The correct size must be used for proper circuit protection and also to assure that there will be no nuisance tripping due to the momentary high starting current of the compressor motor.

WIRING: LOW VOLTAGE WIRING

230/208V, 1 phase equipment use dual primary voltage transformers. All equipment leaves the factory wired on 240V tap. For 208V operation, reconnect from 240V to 208V tap. The acceptable operating voltage range for the 240 and 208V taps are:

TAP	RANGE
240	253 - 216
208	220 - 187

NOTE: The voltage should be measured at the field power connection point in the unit and while the unit is operating at full load (maximum amperage operating condition).

Five (5) wires should be run from thermostat subbase to the 24V terminal board in the unit. A five conductor, 18 gauge copper, color-coded thermostat cable is recommended. The connection points are shown in Figure 7.

TABLE 3 THERMOSTAT WIRE SIZE

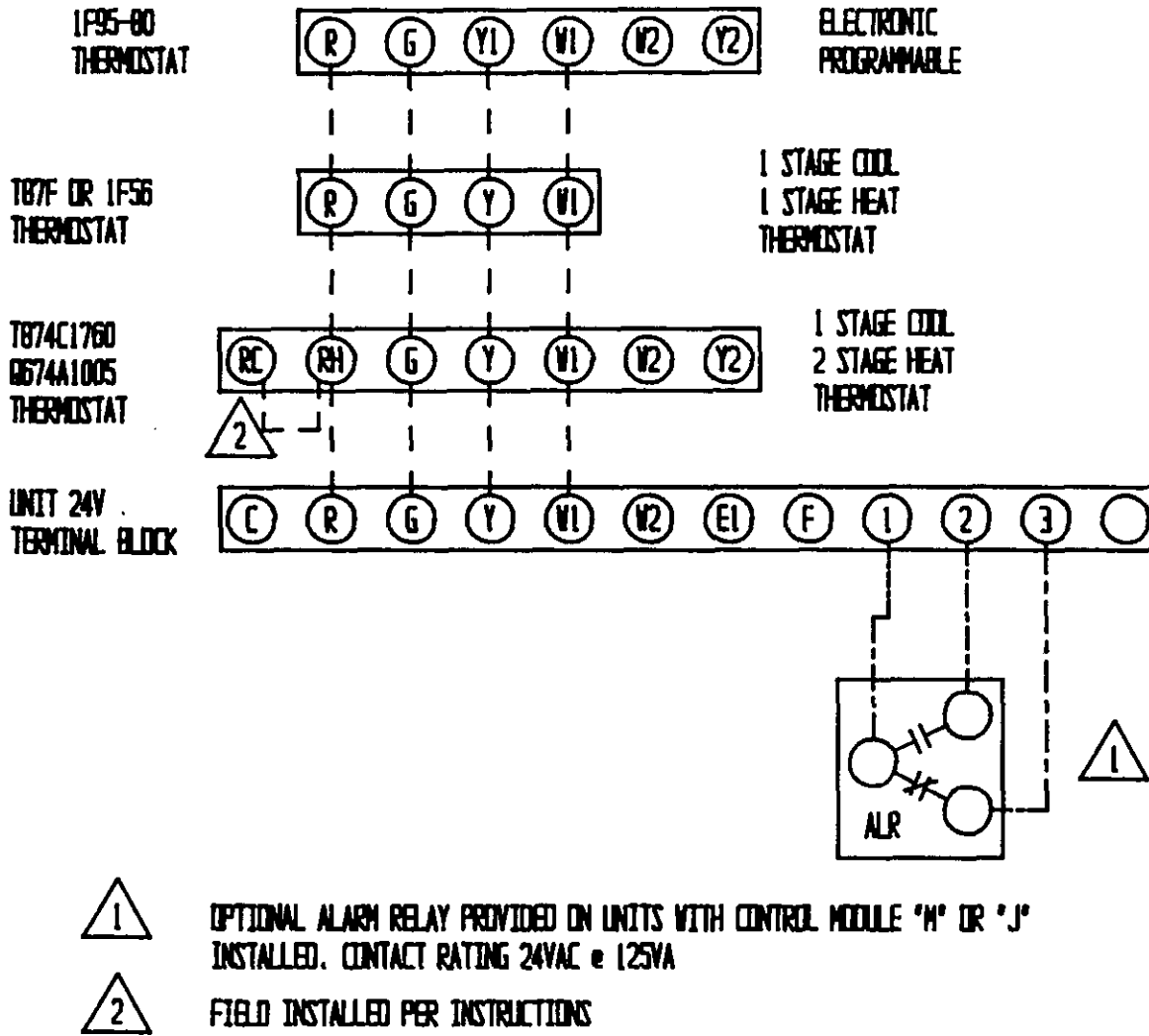
Transformer VA	FLA	Wire Gauge	Maximum Distance In Feet
40	2.3	20 Gauge	45
		18 "	60
		16 "	100
		14 "	160
		12 "	250

TABLE 3A WALL THERMOSTAT AND SUBBASE COMBINATIONS

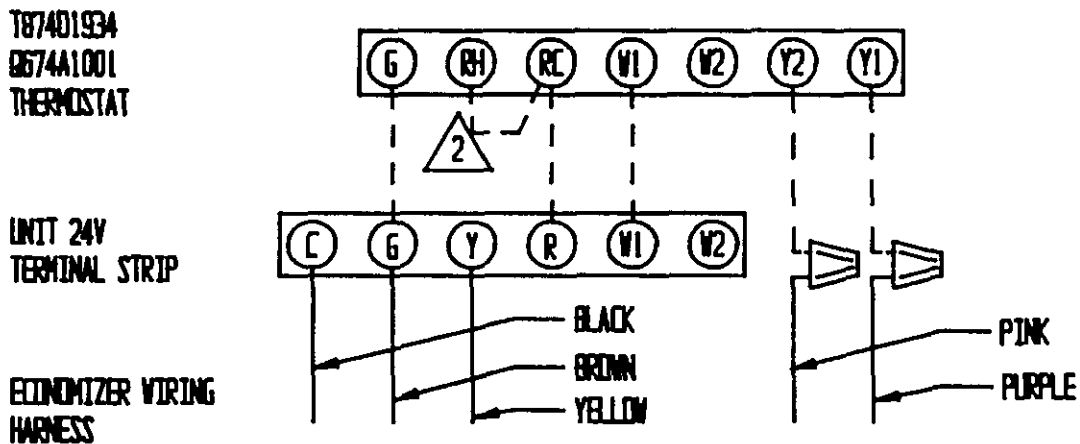
Thermostat	Subbase	Predominate Features
8403-019	8404-012	1 stage cool, 2 stage heat
T874C1760	Q674A1001	System: heat-auto-cool Fan: on-auto
8403-002	8404-003	1 stage heat, 1 stage cool
T87E3111	Q539A1220	System: heat-off-cool Fan: on-auto
8403-009	----	1 stage heat, 1 stage cool
1F56-318	----	System: heat-off-cool Fan: on-auto
5403-035	----	Programmable
1F95-80	----	Electronic

LOW VOLTAGE WIRING

Figure 7



OPTIONAL ECONOMIZER LOW VOLTAGE WIRING



PART 3 -- START-UP

IMPORTANT INSTALLER NOTE

For improved start-up performance, wash the indoor coil with a dishwasher detergent.

SERVICE HINTS

1. Caution owner to maintain clean air filters at all times. Also, not to needlessly close off supply and return air registers. This reduces air flow through the system, which shortens equipment service life as well as increasing operating costs.
2. The unit is equipped with a high pressure cut out switch.
3. Check all power fuses or circuit breakers to be sure they are the correct rating.
4. Periodic cleaning of the outdoor coil to permit full and unrestricted airflow circulation is essential.

SEQUENCE OF OPERATION

COOLING--Circuit R-Y makes at thermostat pulling in compressor contactor, starting the compressor and outdoor motor. The G (indoor motor) circuit is automatically completed on any call for cooling operation or can be energized by manual fan switch on subbase for constant air circulation. On a call for heating, circuit R-W1 make at the thermostat pulling in heat contact for the strip heat and blower operation.

PRESSURE SERVICE PORTS

High and low pressure service ports are installed on all units so that the system operating pressures can be observed. Pressure curves can be found later in the manual covering all models. It is imperative to match the correct pressure curve to the unit by model number.

PART 4 -- TROUBLESHOOTING

FAN BLADE SETTING DIMENSIONS

Shown in the drawing below are the correct fan blade setting dimensions for proper air delivery across the outdoor coil.

Any service work requiring removal or adjustment in the fan and/or motor area will require that the dimensions below be checked and blade adjusted in or out on the motor shaft accordingly.

FIGURE 8

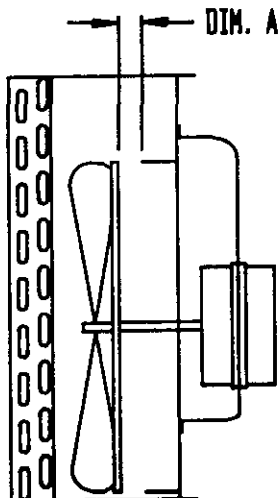


TABLE 4

Model	Dimension A
WA121	1/2"

REFRIGERANT CHARGE

The correct system R-22 charge is shown on the unit rating plate. Optimum unit performance will occur with a refrigerant charge resulting in a suction line temperature (6" from compressor) as shown in the following table:

TABLE 5

Model	Rated Airflow	95° F OD Temperature	82° F OD Temperature
WA121	400	54 - 56	65 - 67

The above suction line temperatures are based upon 80° F dry/bulb/67° F wet bulb (50 percent R.H.) temperature and rated airflow across the evaporator during cooling cycle.

TABLE 6 INDOOR BLOWER PERFORMANCE--CFM @ 230V

B.S.P. In H ₂ O	WA121	
	230V	
	Dry	Wet
.0	530	500
.1	485	460
.2	440	425
.3	390	375
.4	325	300

TABLE 7

Model	Rated CFM*	Rated ESP*	Recommended Airflow Range
WA121	400	.25	500 - 300
*Rated CFM and ESP on high speed tap.			

MAXIMUM ESP OF OPERATION

TABLE 8 ELECTRIC HEAT ONLY

Model	ESP
WA121 A00	.35
WA121 A03	.35
WA121 A05	.35
WA121 K00	.35
WA121 K02	.35
Values shown are for units equipped with STD 1" throw-away filter. Derate ESP by .15 for 2" pleated filters.	

COOLING

TABLE 9

Air Temperature Entering Outdoor Coil °F

Model	Return Air Temperature	Pressure	°	°	°	°	°	°	°	°	°
			75	80	85	90	95	100	105	110	115
WA121	75 deg. DB	Low Side	72	74	76	79	81	83	86	88	91
	62 deg. WB	High Side	187	201	216	232	248	265	282	300	319
	80 deg. DB	Low Side	76	79	82	84	87	90	92	95	97
	67 deg. WB	High Side	192	207	222	238	255	272	290	309	328
	85 deg. DB	Low Side	81	85	88	91	94	97	99	102	104
	72 deg. WB	High Side	198	214	230	247	264	282	300	319	339

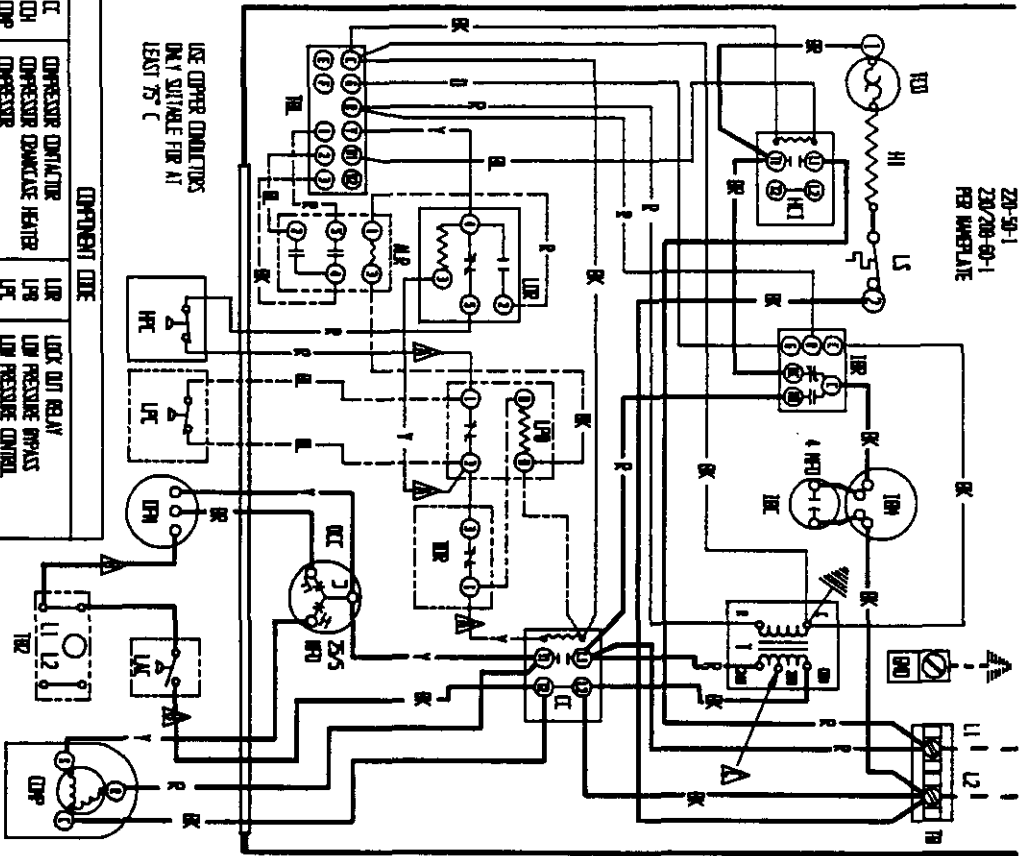
Low side pressure \pm 2 PSIG

High side pressure \pm 5 PSIG

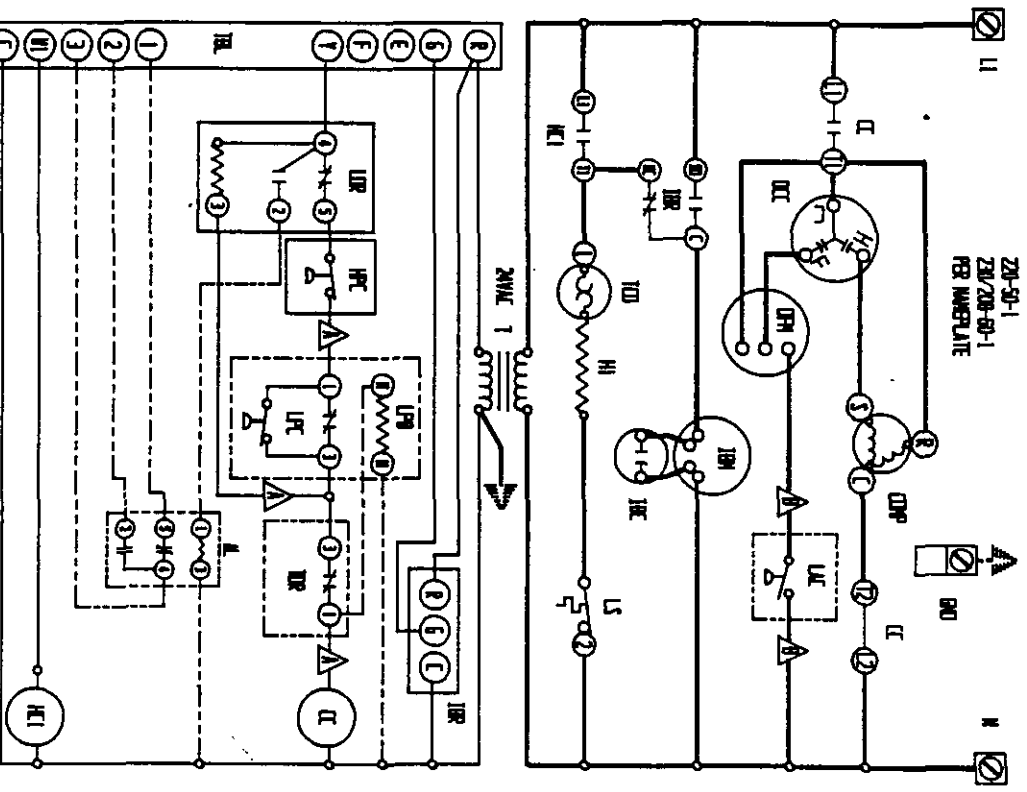
Tables are based upon rated CFM (airflow) across the evaporator coil and should be found under section titled "Refrigerant Charge" elsewhere in manual. If there is any doubt as to correct operating charge being in the system, the charge should be removed, system evacuated, and recharged to serial plate instructions.

TABLE 10 OPTIONAL FIELD INSTALLED ACCESSORIES

Model	Description	W A 1 2 1
BOP-1A	Blank Off Plate	X
BEAD-1	Barometric Fresh Air Damper	X
EIFM-1	Economizer With Exhaust	X
CMA-6	Low Ambient Control	X
CMA-20	LPC + TDR + LAC	X



2N-50-1
2N/208-60-1
REF. WIRING LAYOUT



2N-50-1
2N/208-60-1
REF. WIRING LAYOUT

COMPONENT CODE	DESCRIPTION
CC	COMPRESSOR CONTACTOR
CH	COMPRESSOR CONTACTOR HEATER
CP	COMPRESSOR
CT	CONDENSER
CO	CONDENSER OIL CAPACITOR
EO	EQUIPMENT GROUND
ES	HEAT STOP #1
HC	HEATER CONTACTOR #1
HL	HIGH PRESSURE CONTROL
HM	HEATER BLUNDER CAPACITOR
HN	HEATER BLUNDER MOTOR
IR	INDOOR BLUNDER RELAY
LC	LOW AMBIENT CONTROL

LOCK OUT RELAY	LOW PRESSURE PRESS. TERMINAL BLOCK	LOW PRESSURE CONTROL	UNIT SWITCH	CONDENSER FAN MOTOR	RESTARTER	TERMINAL BLOCK 2 (PT. 1)	LOW VOLTAGE TERMINAL BLOCK	HEATER BLUNDER	THE DELAY RELAY
LOR	LPR	LPC	LS	CFM	CS	TB	LVTB	HL	DR

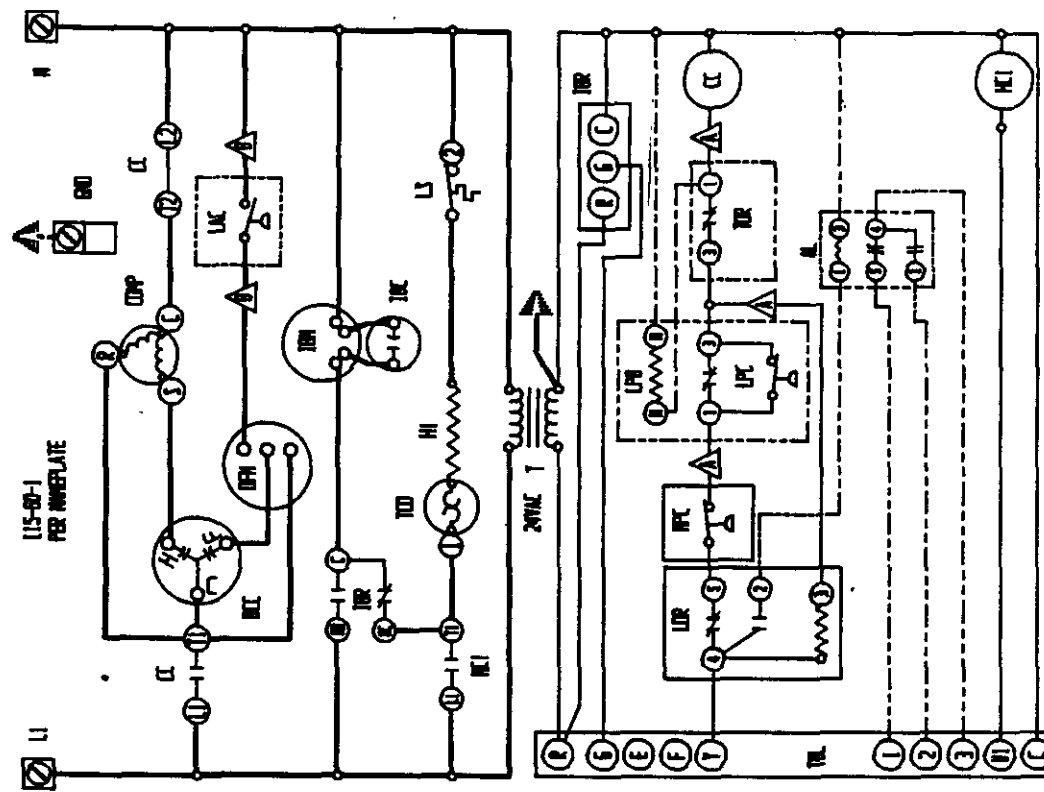
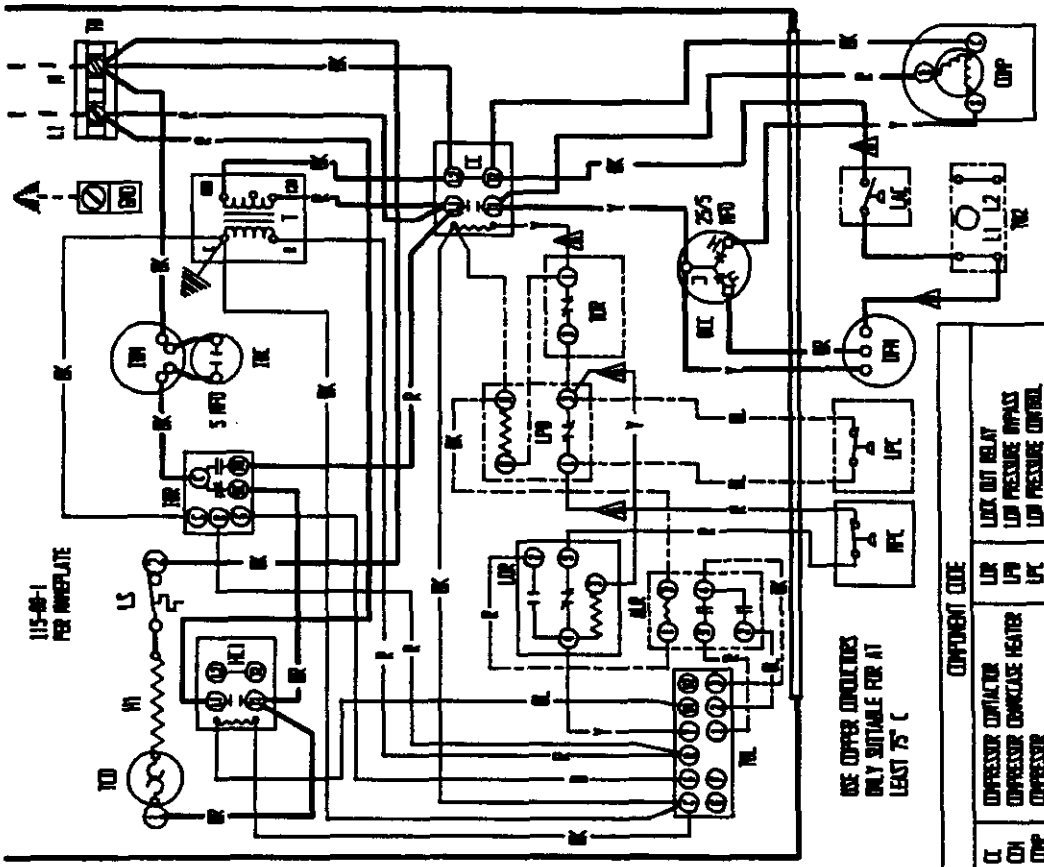
USE OTHER CONTACTORS ONLY SUITABLE FOR AT LEAST 75 C

△ LABELLED WIRES CONNECT IF NO OPTIONS USED.

△ WIRE RED WIRE TO 208V 1P FOR 208V OPERATION

COLOR CODE	WIRE CODE	FUNCTION
BLACK	B	GROUND
RED	R	208V
YELLOW	Y	208V
GREEN	G	GROUND
BLUE	B	208V
WHITE	W	GROUND
VIOLET	V	208V
PURPLE	P	208V
NAVY	N	208V
SLATE	S	208V
TAN	T	208V
PINK	P	208V
LAVENDER	L	208V

BARB WPC. CO.
Dwg. 495-114 D
Dwg. 495-114 E
Dwg. 495-114 F



▲ LABELED WIRES CORRECT IF NO OPTIONS USED.

COMPONENT CODE	
CU	LOCK OUT RELAY
CPH	COMPRESSOR CONTACTOR HEATER
CPP	COMPRESSOR CONTACTOR HEATER
CC	COMPRESSOR
CCN	COMPRESSOR CONTACTOR
CCF	COMPRESSOR CONTACTOR
CCG	COMPRESSOR CONTACTOR
CCH	COMPRESSOR CONTACTOR
CCJ	COMPRESSOR CONTACTOR
CCK	COMPRESSOR CONTACTOR
CCL	COMPRESSOR CONTACTOR
CCM	COMPRESSOR CONTACTOR
CCN	COMPRESSOR CONTACTOR
CCO	COMPRESSOR CONTACTOR
CCP	COMPRESSOR CONTACTOR
CCQ	COMPRESSOR CONTACTOR
CCR	COMPRESSOR CONTACTOR
CCS	COMPRESSOR CONTACTOR
CCU	COMPRESSOR CONTACTOR
CCV	COMPRESSOR CONTACTOR
CCW	COMPRESSOR CONTACTOR
CCX	COMPRESSOR CONTACTOR
CCY	COMPRESSOR CONTACTOR
CCZ	COMPRESSOR CONTACTOR
CC1	COMPRESSOR CONTACTOR
CC2	COMPRESSOR CONTACTOR
CC3	COMPRESSOR CONTACTOR
CC4	COMPRESSOR CONTACTOR
CC5	COMPRESSOR CONTACTOR
CC6	COMPRESSOR CONTACTOR
CC7	COMPRESSOR CONTACTOR
CC8	COMPRESSOR CONTACTOR
CC9	COMPRESSOR CONTACTOR
CC0	COMPRESSOR CONTACTOR
CC10	COMPRESSOR CONTACTOR
CC11	COMPRESSOR CONTACTOR
CC12	COMPRESSOR CONTACTOR
CC13	COMPRESSOR CONTACTOR
CC14	COMPRESSOR CONTACTOR
CC15	COMPRESSOR CONTACTOR
CC16	COMPRESSOR CONTACTOR
CC17	COMPRESSOR CONTACTOR
CC18	COMPRESSOR CONTACTOR
CC19	COMPRESSOR CONTACTOR
CC20	COMPRESSOR CONTACTOR
CC21	COMPRESSOR CONTACTOR
CC22	COMPRESSOR CONTACTOR
CC23	COMPRESSOR CONTACTOR
CC24	COMPRESSOR CONTACTOR
CC25	COMPRESSOR CONTACTOR
CC26	COMPRESSOR CONTACTOR
CC27	COMPRESSOR CONTACTOR
CC28	COMPRESSOR CONTACTOR
CC29	COMPRESSOR CONTACTOR
CC30	COMPRESSOR CONTACTOR
CC31	COMPRESSOR CONTACTOR
CC32	COMPRESSOR CONTACTOR
CC33	COMPRESSOR CONTACTOR
CC34	COMPRESSOR CONTACTOR
CC35	COMPRESSOR CONTACTOR
CC36	COMPRESSOR CONTACTOR
CC37	COMPRESSOR CONTACTOR
CC38	COMPRESSOR CONTACTOR
CC39	COMPRESSOR CONTACTOR
CC40	COMPRESSOR CONTACTOR
CC41	COMPRESSOR CONTACTOR
CC42	COMPRESSOR CONTACTOR
CC43	COMPRESSOR CONTACTOR
CC44	COMPRESSOR CONTACTOR
CC45	COMPRESSOR CONTACTOR
CC46	COMPRESSOR CONTACTOR
CC47	COMPRESSOR CONTACTOR
CC48	COMPRESSOR CONTACTOR
CC49	COMPRESSOR CONTACTOR
CC50	COMPRESSOR CONTACTOR
CC51	COMPRESSOR CONTACTOR
CC52	COMPRESSOR CONTACTOR
CC53	COMPRESSOR CONTACTOR
CC54	COMPRESSOR CONTACTOR
CC55	COMPRESSOR CONTACTOR
CC56	COMPRESSOR CONTACTOR
CC57	COMPRESSOR CONTACTOR
CC58	COMPRESSOR CONTACTOR
CC59	COMPRESSOR CONTACTOR
CC60	COMPRESSOR CONTACTOR
CC61	COMPRESSOR CONTACTOR
CC62	COMPRESSOR CONTACTOR
CC63	COMPRESSOR CONTACTOR
CC64	COMPRESSOR CONTACTOR
CC65	COMPRESSOR CONTACTOR
CC66	COMPRESSOR CONTACTOR
CC67	COMPRESSOR CONTACTOR
CC68	COMPRESSOR CONTACTOR
CC69	COMPRESSOR CONTACTOR
CC70	COMPRESSOR CONTACTOR
CC71	COMPRESSOR CONTACTOR
CC72	COMPRESSOR CONTACTOR
CC73	COMPRESSOR CONTACTOR
CC74	COMPRESSOR CONTACTOR
CC75	COMPRESSOR CONTACTOR
CC76	COMPRESSOR CONTACTOR
CC77	COMPRESSOR CONTACTOR
CC78	COMPRESSOR CONTACTOR
CC79	COMPRESSOR CONTACTOR
CC80	COMPRESSOR CONTACTOR
CC81	COMPRESSOR CONTACTOR
CC82	COMPRESSOR CONTACTOR
CC83	COMPRESSOR CONTACTOR
CC84	COMPRESSOR CONTACTOR
CC85	COMPRESSOR CONTACTOR
CC86	COMPRESSOR CONTACTOR
CC87	COMPRESSOR CONTACTOR
CC88	COMPRESSOR CONTACTOR
CC89	COMPRESSOR CONTACTOR
CC90	COMPRESSOR CONTACTOR
CC91	COMPRESSOR CONTACTOR
CC92	COMPRESSOR CONTACTOR
CC93	COMPRESSOR CONTACTOR
CC94	COMPRESSOR CONTACTOR
CC95	COMPRESSOR CONTACTOR
CC96	COMPRESSOR CONTACTOR
CC97	COMPRESSOR CONTACTOR
CC98	COMPRESSOR CONTACTOR
CC99	COMPRESSOR CONTACTOR
CC00	COMPRESSOR CONTACTOR

COLOR CODE	
BLACK	WHITE
BROWN	RED
RED	ORANGE
YELLOW	GREEN
GREEN	BLUE
BLUE	GRAY
VIOLET	SLATE
PINK	LAVENDER
TAN	

FACTORY SET: FIELD: OPTIONAL:

WIRE VALUE: WIRE VALUE: WIRE VALUE: WIRE VALUE:

BARCO MFG. CO. 4095-117 D