

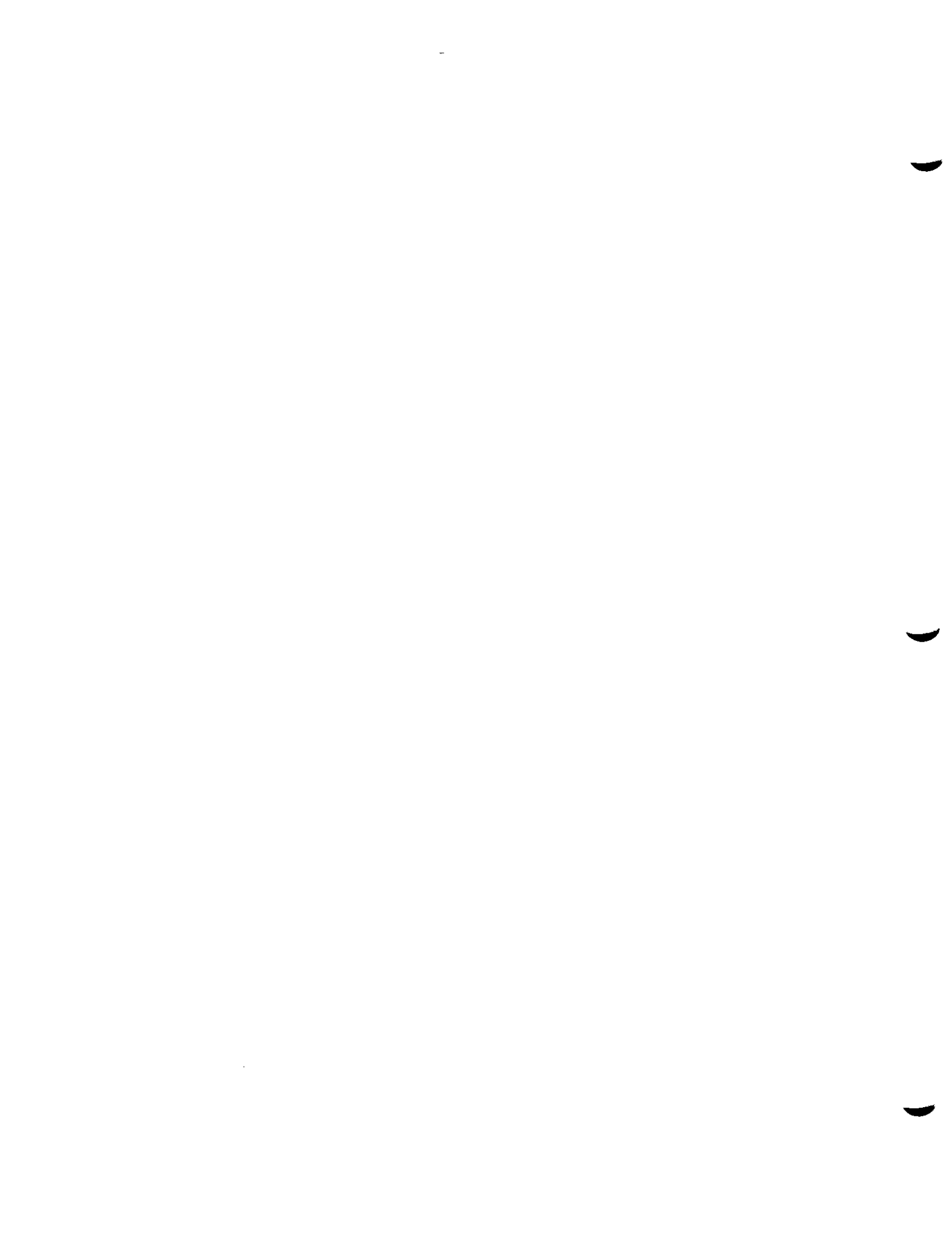
Manufacturing Date Code Identification



**TO BE USED IN IDENTIFYING DATE OF
MANUFACTURE FOR WARRANTY PURPOSES**

**THIS INFORMATION COVERS PRODUCTS MANUFACTURED
BY BARD MANUFACTURING CO., AND MAJOR
COMPONENT SUPPLIERS FOR THOSE PRODUCTS.**

EFFECTIVE 5/1/82



THE PARTS LIST

In order to assist you in selection of your service parts, parts lists for the most common parts are supplied as part of the installation instructions for specific unit models, as well as being available as a complete set of parts lists for all equipment. Any part that does not appear on this list will be acknowledged on your parts order or quoted at the current price upon request.

PARTS PRICE LIST

A corresponding Parts Price List is supplied separate from the Parts List.

WARRANTY AND POLICY

A copy of the equipment and parts warranty is included in this Parts List.

PARTS AND RETURNED GOODS POLICY

Parts shipments may be made by truck, United Parcel Service where available, or Parcel Post. Truck shipments are shipped with collect freight charges. United Parcel Service and Parcel Post are shipped prepaid, with shipping charges added to the parts invoice. Parts shipments do not carry freight allowance. Defective parts must be returned within 30 days of invoice date, transportation charges prepaid. Defective parts will be tagged using the "Return Material Tag," (see illustrated copy, Fig. 1).

RETURN MATERIAL TAG

- A. CARDBOARD COPY - Attach firmly to the defective part being returned.
 B. WHITE COPY - To be kept by the customer.
 C. PINK COPY - To be mailed to Bard.

The form must be filled out completely, down to and including reason for failure. The words "Defective," "Failed," "Won't Work" and "Inoperative" are not an acceptable reason for failure. Upon receipt of the part and the "Returned Material Tag," Bard Manufacturing Company will consult their records and if claim is valid, will issue a credit memo to the customer accepting the claim. If the part is found not to be defective, we will not allow any credit. The customer will be notified, requesting disposition of part.

HERMETIC COMPRESSOR POLICY

If Bard Manufacturing Company's customer purchases compressors from us, we will allow full credit for defective compressors upon receipt at Bryan, Ohio freight prepaid providing:

1. Compressors with solder stub tubes must be sealed with a good refrigeration seal by capping and soldering the tubes. Failure to do so voids the warranty.
2. The compressor must be tagged, with the RETURN MATERIAL TAG, giving full data covering the unit from which it was removed.
3. Reason for failure must be complete. "Defective," "Failed" or "Inoperative" are not acceptable.
4. Installation date and date repaired must be included.
5. The compressor must have failed during the warranty period.
6. The compressor must be received at Bard within 30 days from invoice date.
7. If the compressor serial plate has been removed, the warranty will be voided and no credit will be allowed.

Our records and inspection will be final in determining the warranty status.

In the event the compressor is bought direct from the compressor manufacturer or his distributor, it will be necessary that the customer return the defective compressor to Bard and it will be subject to replacement providing the compressor is within the warranty period.

In the event the compressor vendor finds the returned compressor not to be defective and therefore charges Bard for replacement, Bard reserves the right to invoice the customer for the replacement.

TRANSPORTATION CLAIMS

The responsibility of Bard Manufacturing Company shall cease upon the delivery of goods in good order to the transportation company. Since goods are shipped at the buyer's risk, they should be examined carefully before signing delivery receipts. If the shipment is offered by the transportation company in bad order, or if number of packages does not agree with number called for on the freight bill, buyer should require the transportation company agent to make notation of damage or shortage on all copies of the delivery receipt; this will allow the buyer to institute a damage or shortage claim. Concealed damage should be reported immediately to the transportation company, allowing them to make inspection and necessary notation. Section 40, I.C.C. Ruling provides: "It shall be unlawful for any such receiving or delivering common carrier to provide by rule, contract, regulation or otherwise a shorter period for filing of loss and damage claims than nine months following delivery."

BARD MANUFACTURING COMPANY RETURN MATERIAL TAG	
DEALER Name: _____ Address: _____ City: _____ State: _____	
Part Name: _____	Replacement Invoice No.: _____
Unit Information:	
Model No.: _____	Serial No.: _____
Instal. Date: _____	Date Part Replaced: _____
Old Comp. Serial No.: _____	New Comp. Serial No.: _____
Explain Nature of Failure: _____	
Do Not Use Defective: _____	
Issue Credit For Part To: <input type="checkbox"/> Credit Only <input type="checkbox"/> Replace Part	Company Name: _____ Address: _____ City: _____ State: _____
Return Freight Prepaid to — BARD MFG. CO., Bryan, Ohio 43886	
COLLECT SHIPMENTS WILL BE REFUSED	

BE SURE TAG IS LEGIBLE
 MUST BE COMPLETE
 White — Retain for your records.
 Pink — Mail to Bard Mfg. Co.
 Tag — Attach to part. Form No. 701-943

No credit or replacement will be made unless Tag is completed and returned with each part.

ATTACH TO PART

Fig. 1

BARD

PRIOR TO APRIL 1, 1980			APRIL 1, 1980 to JUNE 1, 1980			AFTER JUNE 1, 1980		
MONTH	YEAR		MONTH	YEAR		MONTH	YEAR	
January	- A	1969 - J	April	- D	1980 - A	January	- A	1980 - 80
February	- B	1970 - K	May	- F		February	- B	1981 - 81
March	- C	1971 - L				March	- C	1982 - 82
April	- D	1972 - M				April	- D	1983 - 83
May	- E	1973 - N				May	- F	1984 - 84
June	- F	1974 - O				June	- H	1985 - 85
July	- G	1975 - P				July	- J	etc.
August	- H	1976 - R				August	- K	
September	- J	1977 - S				September	- L	
October	- K	1978 - T				October	- M	
November	- L	1979 - U				November	- N	
December	- M	1980 - V				December	- P	

EXAMPLE

Unit Identity No. → [361293] [D] [S]

Month → D = April

Year → S = 1977

Serial No. → 361293

EXAMPLE

Compressor Part No.* → [023] [D] [A] [506093]

Month → D = April

Year → A = 1980

Unit Identity No. → 023 = 8000-023*

Serial No. → 023

EXAMPLE

Compressor Part No.* → [023] [H] [80] [527984]

Month → H = June

Year → 80 = 1980

Unit Identity No. → 023 = 8000-023*

Serial No. → 023

*All compressors are 8000-xxx. FURNACES and BLOWER COILS do not include compressor part number.

IMPORTANT: Please supply complete serial number, including compressor part number, month, year and unit identity number.

SPRAGUE ELECTRIC - GENERAL ELECTRIC - CORNELL DUBILIER (CAPACITORS)

Date code is marked by year and week:

EXAMPLE: 8116
81 = Year
16 = 16th week of 1981

ELMWOOD SENSOR

(CONTACTORS)

Date code is marked by year and week:

EXAMPLE 81/4 = 4th week of 1981

WHITE RODGERS

After January 1, 1976

EXAMPLE: 8101
81 = Year
01 = 1st week of 1981

RANCO

Date code is marked by year and week:

EXAMPLE: 8120
81 = Year
20 = 20th week of 1981

TEXAS INSTRUMENTS

MONTH	1st to 15th	16th to 31st	Plant A or V
January	A	B	
February	C	D	
March	E	F	
April	G	H	
May	J	K	
June	L	M	
July	N	P	
August	Q	R	
September	S	T	
October	U	V	
November	W	X	
December	Y	Z	

EXAMPLE: G2 V
G2 = April, 1982
V = Versailles, Ky.

ROBERTSHAW

Date code is marked by year and week:

EXAMPLE: 8115
81 = Year
15 = 15th week of 1981

RBM (ESSEX WIRE)

Date code is marked by year and week:

EXAMPLE: 8104
81 = Year
04 = 4th week of 1981

JARD

Date code is marked by year and week:

EXAMPLE: 152
1 = 1981
52 = Week

MALLORY (TIMER)

Date code is marked by week and year:

EXAMPLE: 3481
34 = Week
81 = Year

WEBSTER (OIL BURNER TRANSFORMERS)

Date code is marked by month and year:

MONTH
A - January G - July
B - February H - August
C - March J - September
D - April K - October
E - May L - November
F - June M - December
EXAMPLE: D81
April, 1981

FRANCEFORMER (OIL FURNER TRANSFORMERS)

Date code is marked by month and year on nameplate.

EXAMPLE: 3/81

WEBSTER (FUEL PUMPS)

Date code is marked by month and year.

MONTH
A - January G - July
B - February H - August
C - March J - September
D - April K - October
E - May L - November
F - June M - December
EXAMPLE: D81
April, 1981

SUNDSTRAND (FUEL PUMPS)

Under the new method, the month is indicated by a code letter. The year is indicated by the last two digits of the year. This system will apply to all products. The new monthly codes are:

Table with columns for CODE, MONTH, and letters A-DEC. CODE: SMTHYDRAULIC. MONTH: JAN FEB MAR APRIL MAY JUNE JULY AUG SEPT OCT NOV DEC

Example: Product manufactured in September, 1974. is stamped T75.

*All units are pre-dated 6 months before shipment.

Repaired products returned from the field will be stamped in a similar manner as above. Therefore, repaired products will have at least two date codes stamped on them. The latest date will prevail in all cases.

MOTORS

FRANKLIN

MONTH YEAR
A - January G - July 80
B - February H - August 81
C - March J - September 82
D - April K - October 83
E - May L - November 84
F - June M - December 85
EXAMPLE:
G81 = July, 1981

WESTINGHOUSE

MONTH
A - January G - July
B - February H - August
C - March J - September
D - April K - October
E - May L - November
F - June M - December
EXAMPLE:
D81 - April, 1981

EMERSON (STAMPED IN FRAME)

MONTH
A - January G - July
B - February H - August
C - March J - September
D - April K - October
E - May L - November
F - June M - December
EXAMPLE:
D81 = April, 1981

GENERAL ELECTRIC (STAMPED ON BEARING CAP)

MONTH YEAR
A - January G - July U - 1982
B - February H - August V - 1983
C - March J - September W - 1984
D - April K - October X - 1985
E - May L - November Y - 1986
F - June M - December Z - 1987
EXAMPLE: DNP
D = Month (April)
S = Year (1980)
P = Manufacturer's Plant

MARATHON (STAMPED IN FRAME)

YEAR MONTH
D - 1975 A - January
E - 1976 B - February
F - 1977 C - March
H - 1978 D - April
J - 1979 E - May
K - 1980 F - June
L - 1981 H - July
M - 1982 J - August
N - 1983 K - September
P - 1984 L - October
R - 1985 M - November
N - December
EXAMPLE:
LD - 1981, April

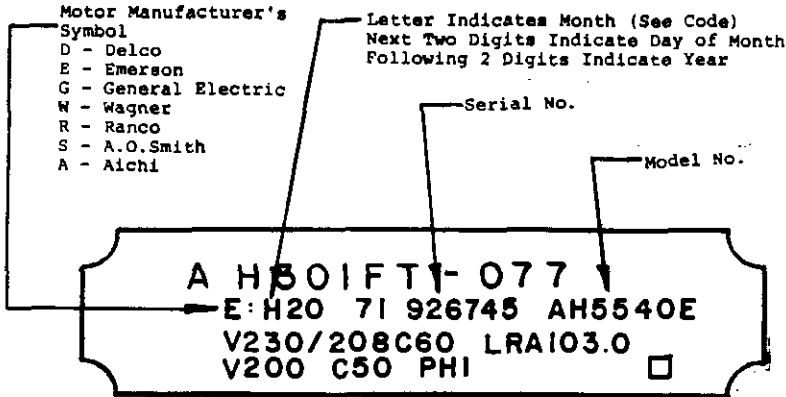
TECUMSEH

The date of manufacture is determined by a code on the serial plate or unit nameplate. This code is as follows:

Starting in January, 1940 the date designation on all new and factory rebuilt hermetic compressors was simplified to one letter and one figure. The months are lettered as follows:

January - A	July - G
February - B	August - H
March - C	September - J
April - D	October - K
May - E	November - L
June - F	December - M

TYPICAL CURRENT SERIAL PLATE

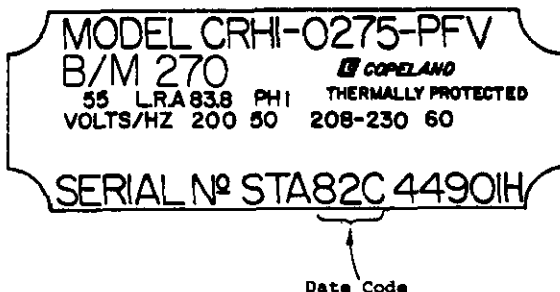


COPELAND

Includes the date code in the bottom line of data on the rating plate, marked SERIAL NO. The date will be in the format noted below:

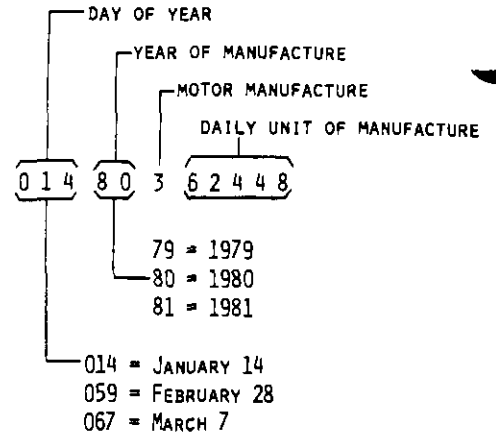
XX	X	XXXXX
2 digits	1 letter	5 digits
Year of Manufacture	Month of Manufacture	Serial Number
80 = 1980	A = January	
81 = 1981	B = February	
82 = 1982	C = March	
83 = 1983	D = April	
84 = 1984	E = May	
85 = 1985	F = June	
86 = 1986	G = July	
	H = August	
	I = September	
	J = October	
	K = November	
	L = December	

CODE PLATE



BRISTOL

SERIAL NUMBER SYSTEM:



CODE PLATE (LOCATED ON TOP OF COMPRESSOR)

