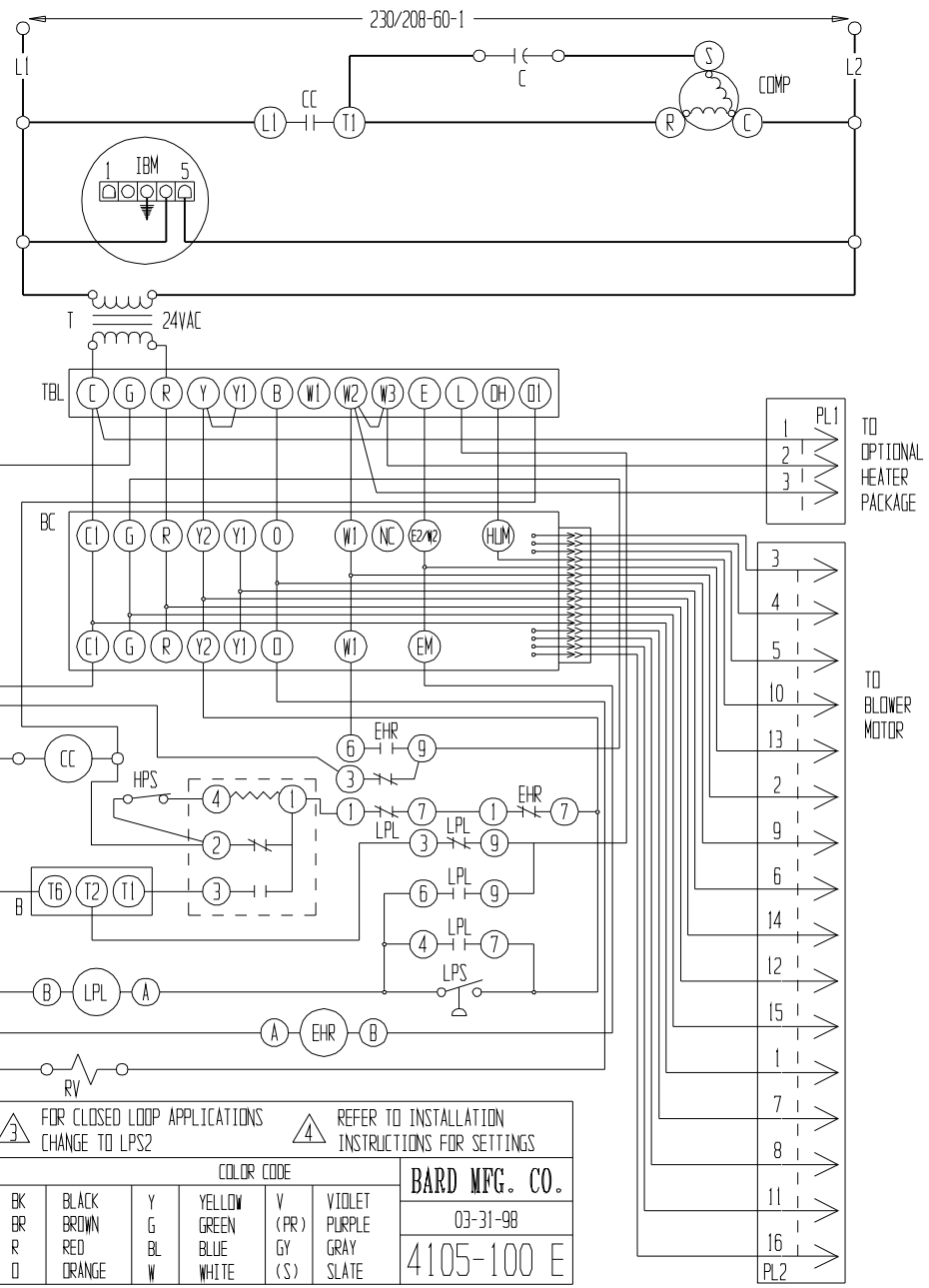


230V WATER CIRCULATING PUMP(S) CONNECTED FOR DIRECT CONTROL FROM COMPRESSOR CONTRACTOR

MODEL	CAPACITOR
GSVS24	35/370v
GSVS30	35/370v
GSVS36	45/370v
GSVS42	50+5/370v

FOR DUAL CAN CAPACITOR CONNECTIONS MADE AT "C" & "HERM" ON CAPACITOR. FAN NOT USED.



COMPONENT CODE			
IBM	INDOOR BLOWER MOTOR	HPS	HIGH PRESSURE SWITCH
B	BLINKER	LPS1	LOW PRESSURE SWITCH 1 (27#)
BC	BLOWER CONTROL	LPS2	LOW PRESSURE SWITCH 2 (15#)
C	CAPACITOR	LPL	LOW PRESSURE LOCKOUT
CC	COMPRESSOR CONTACTOR	PL1	PLUG #1
COMP	COMPRESSOR	PL2	PLUG #2
EHR	EMERGENCE HEAT RELAY	RV	REVERSING VALVE
GND	EQUIPMENT GROUND	T	TRANSFORMER
HPL	HIGH PRESSURE LOCKOUT	TBL	LOW VOLTAGE TERMINAL BLOCK

USE COPPER CONDUCTORS ONLY SUITABLE FOR AT LEAST 75° C

SEE TABLE, FOR 208v OPERATION MOVE THIS WIRE TO 208v TRANSFORMER TAP

FOR CLOSED LOOP APPLICATIONS CHANGE TO LPS2

REFER TO INSTALLATION INSTRUCTIONS FOR SETTINGS

	FACTORY STD.	FIELD	OPTIONAL
HIGH VOLTAGE	---	---	---
LOW VOLTAGE	---	---	---
ACCESSORY	---	---	---

COLOR CODE			
BK	BLACK	Y	YELLOW
BR	BROWN	G	GREEN
R	RED	BL	BLUE
O	ORANGE	W	WHITE
		V (PR)	VIOLET
		GY	GRAY
		(S)	SLATE

**BARD MFG. CO.**  
03-31-98  
4105-100 E

