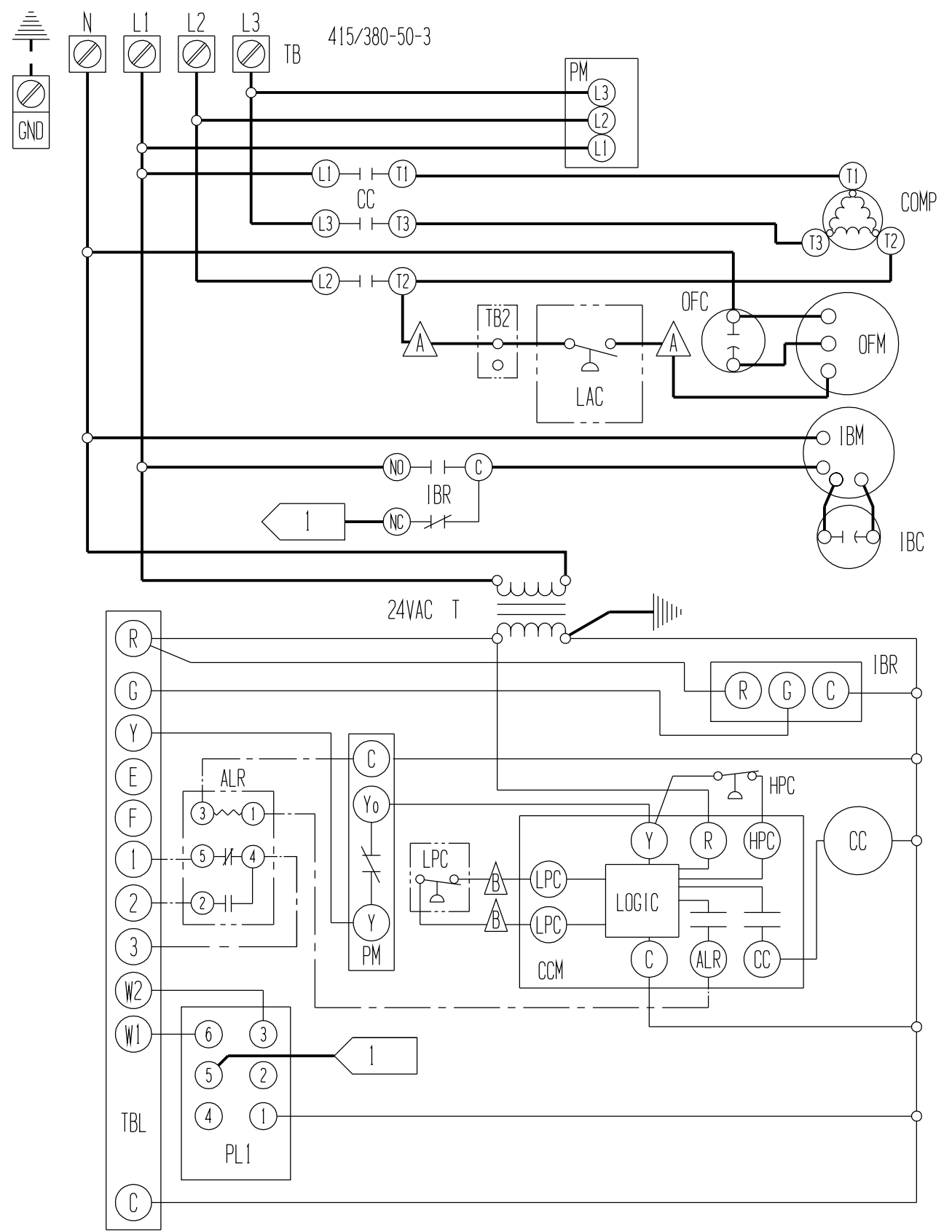


USE COPPER CONDUCTORS
ONLY SUITABLE FOR AT
LEAST 75° C



COMPONENT CODE			
ALR	ALARM RELAY	IBR	INDOOR BLOWER RELAY
CB1	CIRCUIT BREAKER #1	LAC	LOW AMBIENT CONTROL
CB2	CIRCUIT BREAKER #2	LPC	LOW PRESSURE CONTROL
CC	COMPRESSOR CONTACTOR	LS	LIMIT SWITCH
CCM	COMPRESSOR CONTROL MODULE	OFC	OUTDOOR FAN CAPACITOR
COMP	COMPRESSOR	OFM	OUTDOOR FAN MOTOR
GND	EQUIPMENT GROUND	PL1	PLUG #1
H1	HEAT STRIP #1	PM	PHASE MONITOR
H2	HEAT STRIP #2	T	TRANSFORMER
HC1	HEATER CONTACTOR #1	TB, TB2	TERMINAL BLOCK
HC2	HEATER CONTACTOR #2	TBL	LOW VOLTAGE TERMINAL BLOCK
HPC	HIGH PRESSURE CONTROL	TCO	THERMAL CUTOFF
IBC	INDOOR BLOWER CAPACITOR		
IBM	INDOOR BLOWER MOTOR		

A , B LABELED WIRES CONNECT IF NO OPTIONS USED. C MOVE RED WIRE TO 208V TAP FOR 380V OPERATION D RED (LOW) BLACK (HIGH) WERE APPLICABLE E HIGH (BLACK) SPEED TAP NOT TO BE USED ON 50 H2 MODELS

	COLOR CODE																		
	FACTORY STD.	FIELD	OPTIONAL	BK	BR	R	O	Y	G	BL	W	V (PR)	GY (S)	T	PK	L	TAN	PINK	LAVENDER
HIGH VOLTAGE	<u>————</u>	<u>-----</u>	<u>-----</u>	BK	BR	R	O	Y	G	BL	W	V (PR)	GY (S)	T	PK	L	TAN	PINK	LAVENDER
LOW VOLTAGE	<u>————</u>	<u>-----</u>	<u>-----</u>	BK	BR	R	O	Y	G	BL	W	V (PR)	GY (S)	T	PK	L	TAN	PINK	LAVENDER
ACCESSORY	<u>————</u>	<u>-----</u>	<u>-----</u>	BK	BR	R	O	Y	G	BL	W	V (PR)	GY (S)	T	PK	L	TAN	PINK	LAVENDER

BARD MFG. CO.
4095-623 B