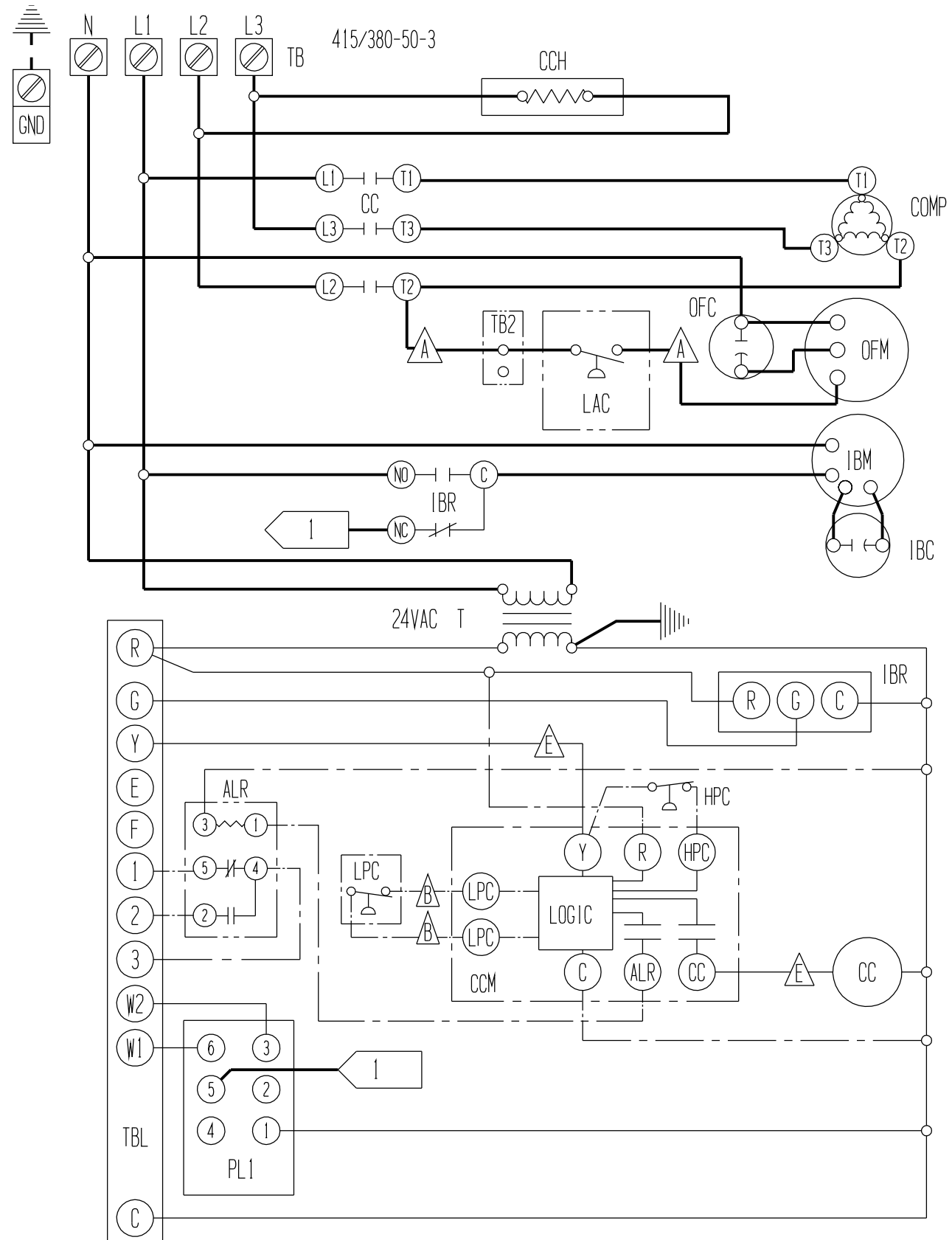


USE COPPER CONDUCTORS
ONLY SUITABLE FOR AT
LEAST 75° C

COMPONENT CODE			
ALR	ALARM RELAY	IBM	INDOOR BLOWER MOTOR
CB1	CIRCUIT BREAKER #1	IBR	INDOOR BLOWER RELAY
CB2	CIRCUIT BREAKER #2	LAC	LOW AMBIENT CONTROL
CC	COMPRESSOR CONTACTOR	LPC	LOW PRESSURE CONTROL
CCH	CRANKCASE HEATER	LS	LIMIT SWITCH
CCM	COMPRESSOR CONTROL MODULE	OFC	OUTDOOR FAN CAPACITOR
COMP	COMPRESSOR	OFM	OUTDOOR FAN MOTOR
GND	EQUIPMENT GROUND	PL1	PLUG #1
H1	HEAT STRIP #1	T	TRANSFORMER
H2	HEAT STRIP #2	TB, TB2	TERMINAL BLOCK
HC1	HEATER CONTACTOR #1	TBL	LOW VOLTAGE TERMINAL BLOCK
HC2	HEATER CONTACTOR #2	TCO	THERMAL CUTOFF
HPC	HIGH PRESSURE CONTROL		
IBC	INDOOR BLOWER CAPACITOR		

LABELED WIRES CONNECT IF NO OPTIONS USED. MOVE RED WIRE TO 208V TAP FOR 380V OPERATION RED (LOW) BLACK (HIGH) WERE APPLICABLE

HIGH VOLTAGE	FACTORY STD.			FIELD			OPTIONAL			COLOR CODE							BARD MFG. CO.							
	————	————	————	-----	-----	-----	-----	-----	-----	BK	BR	R	O	Y	G	BL		W	V (PR)	GY (S)	T	PK	L	TAN PINK LAVENDER
LOW VOLTAGE	————	————	————	-----	-----	-----	-----	-----	-----															
ACCESSORY	————	————	————	-----	-----	-----	-----	-----	-----															



BARD MFG. CO.
4095-621 A