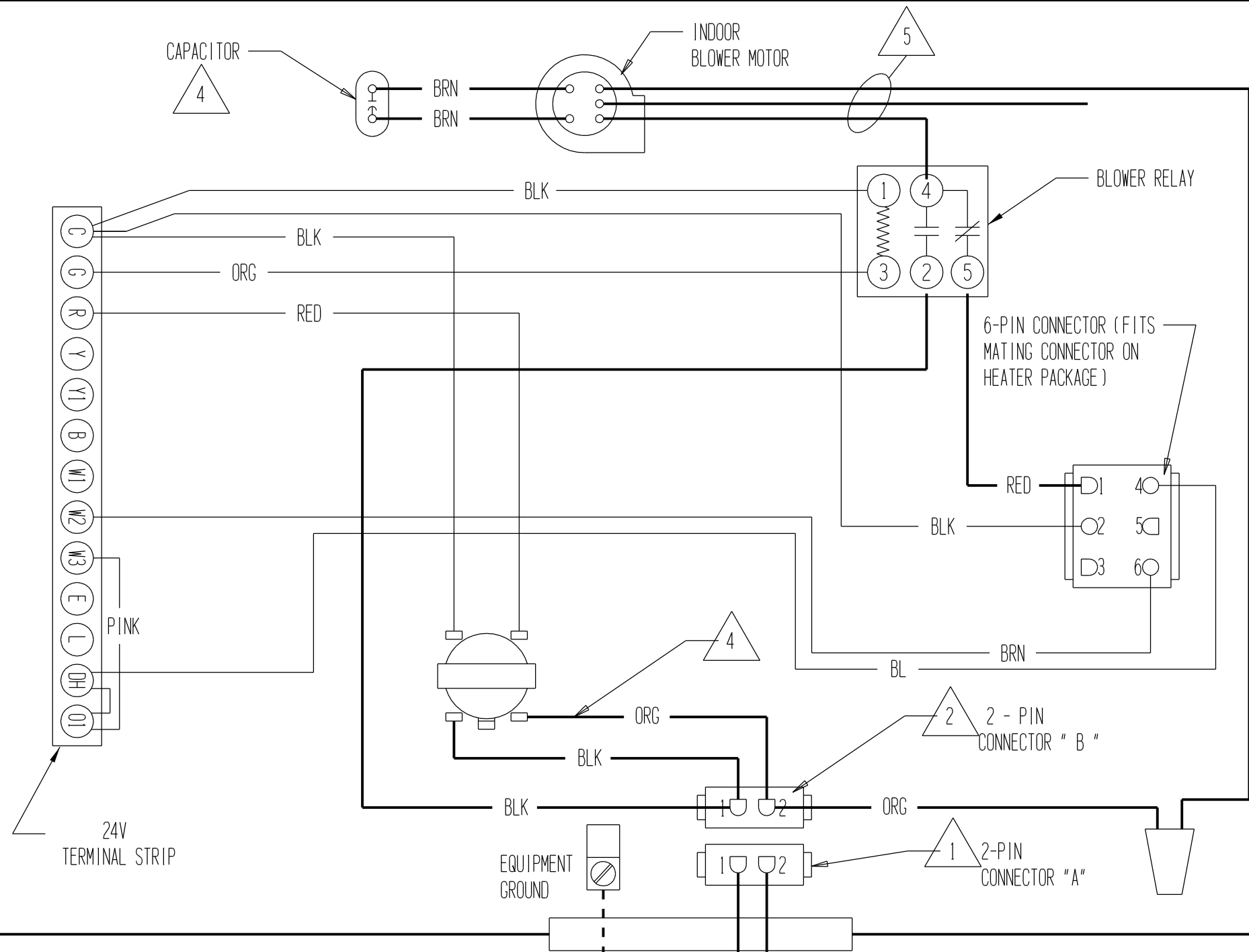
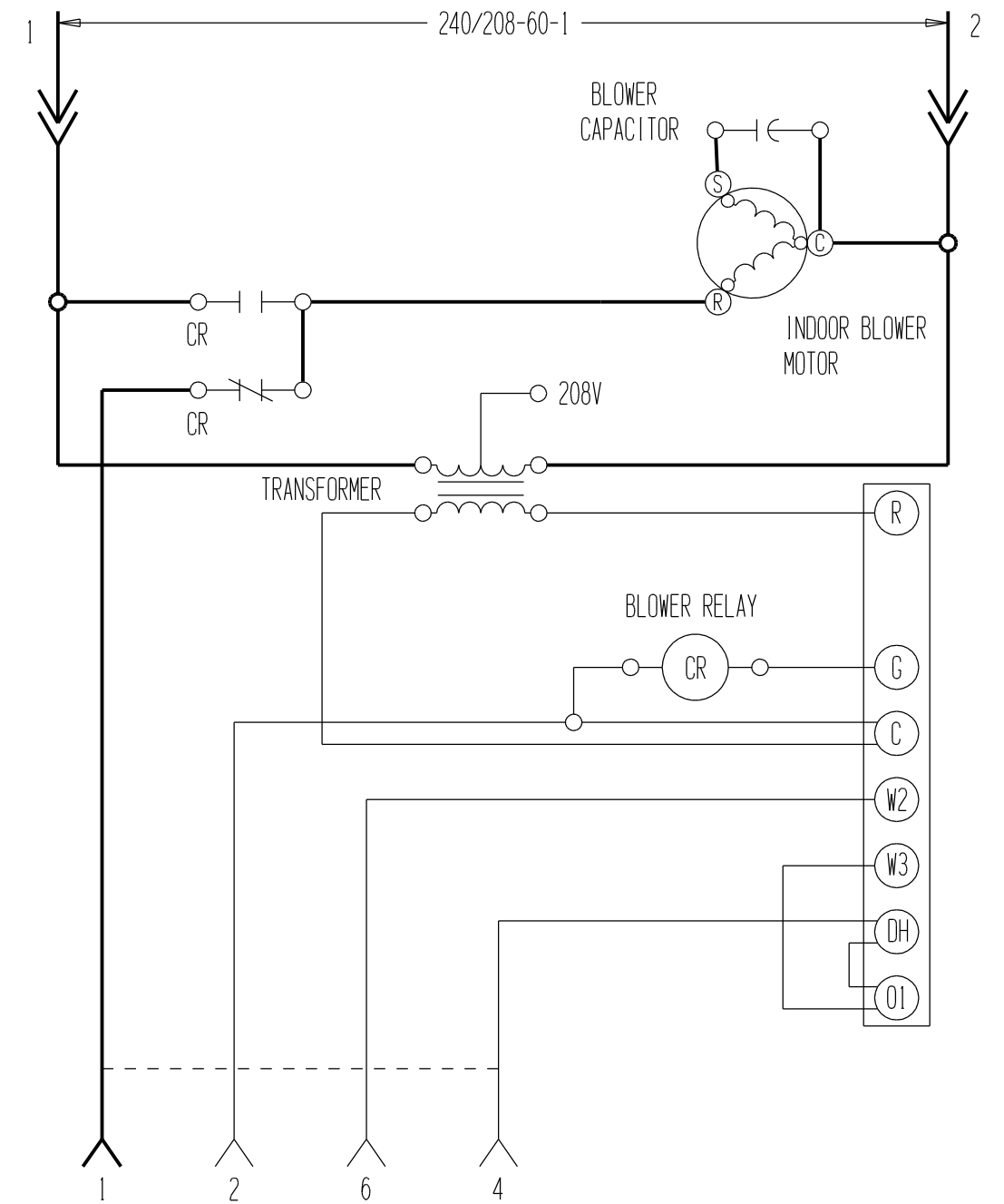


# CONNECTION DIAGRAM

DANGER: ELECTRICAL SHOCK HAZARD.  
DISCONNECT POWER BEFORE SERVICING.



# LADDER DIAGRAM



1 2-PIN CONNECTOR "A" USED FOR FIELD CONNECTION WHEN NO HEATER PACKAGE IS INSTALLED.

2 WHEN HEATER PACKAGE IS INSTALLED, CONNECTOR "B" CONNECTS TO MATCHING CONNECTOR ON HEATER PACKAGE.

USE ALUMINUM OR COPPER CONDUCTORS SUITABLE FOR AT LEAST 75°C ONLY

3 REFER TO INSTALLATION INSTRUCTIONS FOR CONTROL CIRCUIT WIRING

4 FOR 208V OPERATION MOVE THIS WIRE TO THE 208V TRANSFORMER TAP

	FACTORY WIRING	FIELD WIRING
Low Voltage	—————	-----
High Voltage	—————	-----

4	MODEL	CAPACITOR
	SBC024B	5/370
	SBC036B SBC048B	7.5/440

5	WIRE COLOR	MOTOR SPEED
	YELLOW	COMMON
	BLACK	HIGH
	BLUE	MEDIUM (SBC024B ONLY)
	RED	LOW