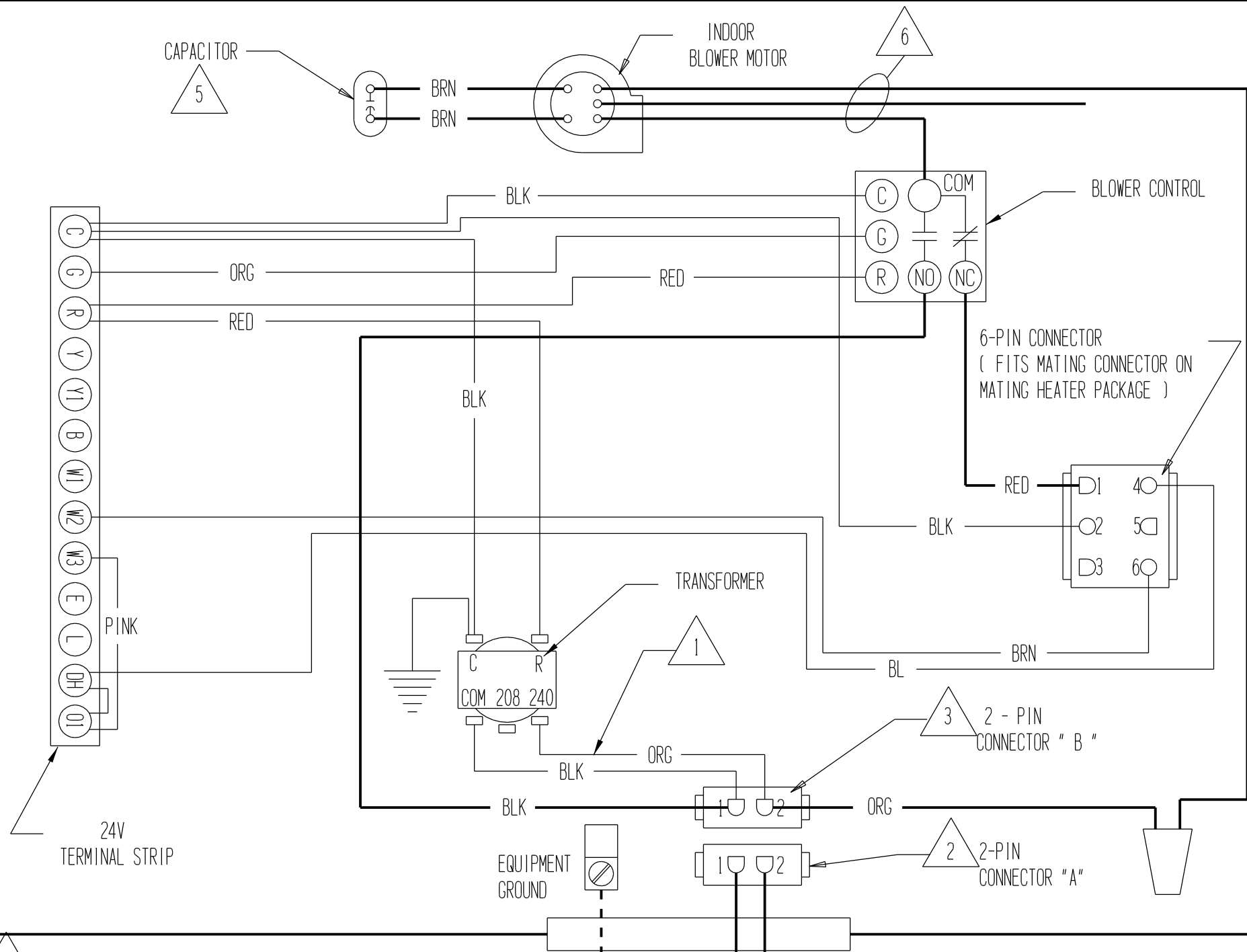
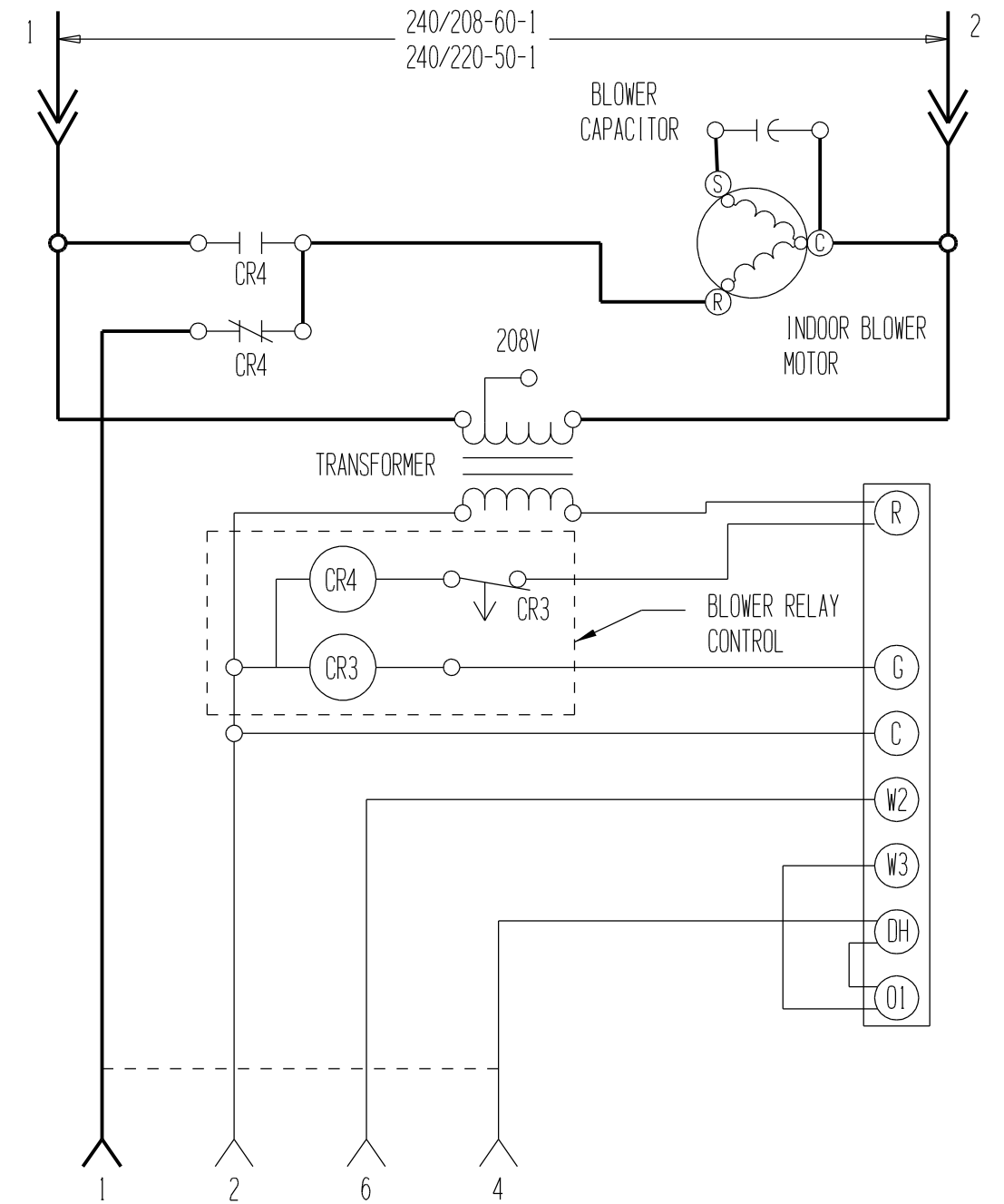


# CONNECTION DIAGRAM

DANGER: ELECTRICAL SHOCK HAZARD.  
DISCONNECT POWER BEFORE SERVICING.



# LADDER DIAGRAM



1 FOR 208V OPERATION MOVE THIS WIRE TO THE 208V TRANSFORMER TAP

2 2-PIN CONNECTOR "A" USED FOR FIELD CONNECTION WHEN NO HEATER PACKAGE IS INSTALLED.

3 WHEN HEATER PACKAGE IS INSTALLED, CONNECTOR "B" CONNECTS TO MATCHING CONNECTOR ON HEATER PACKAGE.

USE ALUMINUM OR COPPER CONDUCTORS SUITABLE FOR AT LEAST 75°C ONLY

4 REFER TO INSTALLATION INSTRUCTIONS FOR CONTROL CURCUIT WIRING

240/208-60-1  
240/220-50-1

	FACTORY WIRING	FIELD WIRING
Low Voltage	_____	-----
High Voltage	—————	-----

5

MODEL	CAPACITOR
NBC24B	5/370
NBC35B	7.5/440
NBC36B	
NBC48B	
NBC60BX	

6

WIRE COLOR	MOTOR SPEED
YELLOW	COMMON
BLACK	HIGH
BLUE	MEDIUM (NBC24B ONLY)
RED	LOW