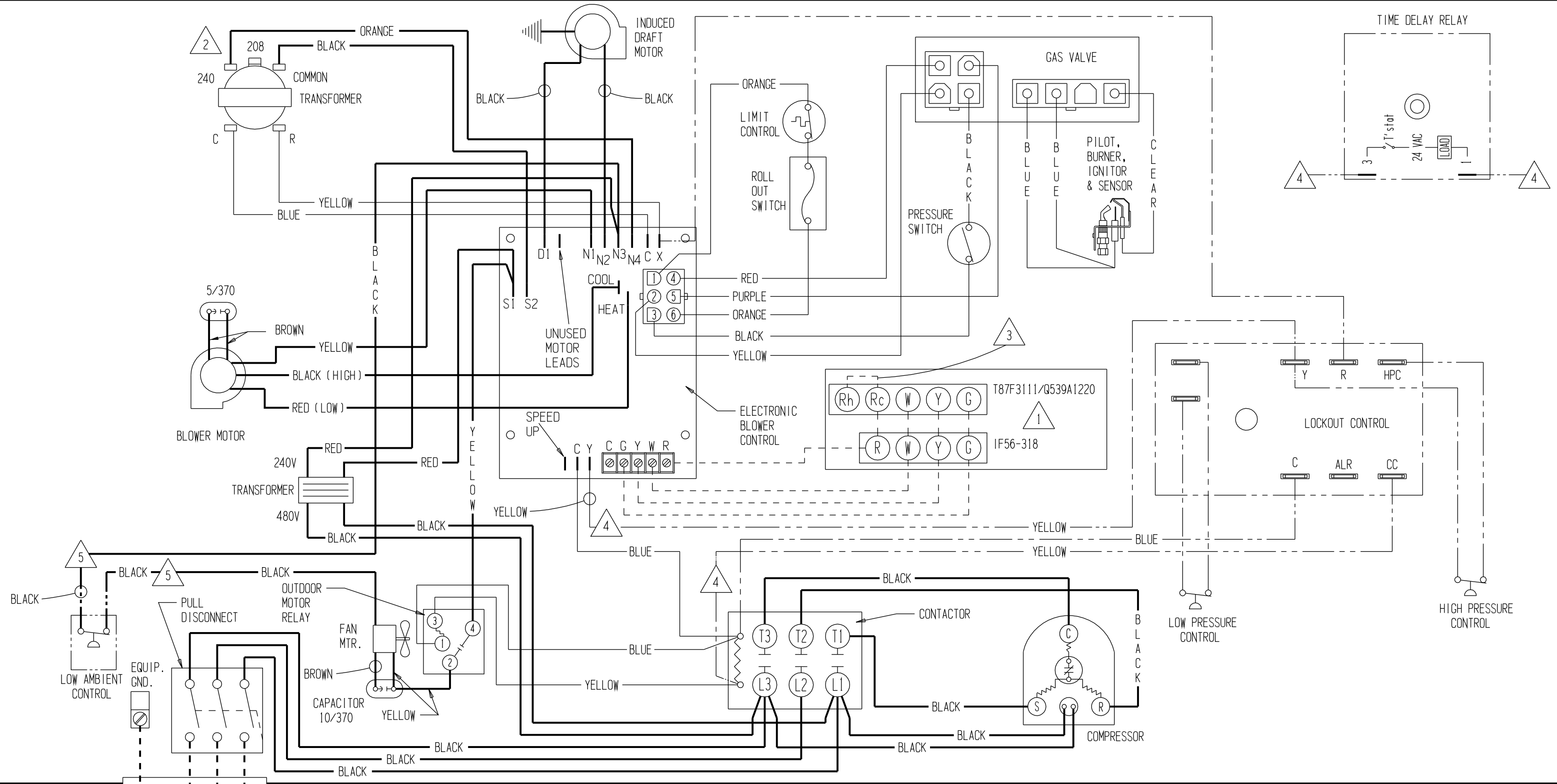


# CONNECTION DIAGRAM

DANGER: ELECTRICAL SHOCK HAZARD,  
DISCONNECT POWER BEFORE SERVICING



460 - 60 - 3

USE COPPER OR ALUMINUM WIRE

	FACTORY STD.	FIELD	OPTIONAL
HIGH VOLTAGE	————	- - - -	· · · ·
LOW VOLTAGE	————	- - - -	· · · ·
ACCESSORY	————	- - - -	· · · ·

IF ANY OF THE ORIGINAL WIRE AS SUPPLIED WITH THE APPLIANCE MUST BE REPLACED, IT MUST BE REPLACED WITH WIRING MATERIAL HAVING A TEMPERATURE RATING OF AT LEAST 105°C EXCEPT THE IGNITION CABLE WHICH IS 250°C HIGH VOLTAGE CABLE.

- 1 SET HEAT ANTICIPATOR AT .6 A
- 2 FOR 208V OPERATION MOVE THIS WIRE TO 208V TRANSFORMER TAP
- 3 ADD JUMPER R<sub>c</sub> - R<sub>h</sub>
- 4
- 5 LABELED WIRES CONNECT IF NO OPTIONS USED