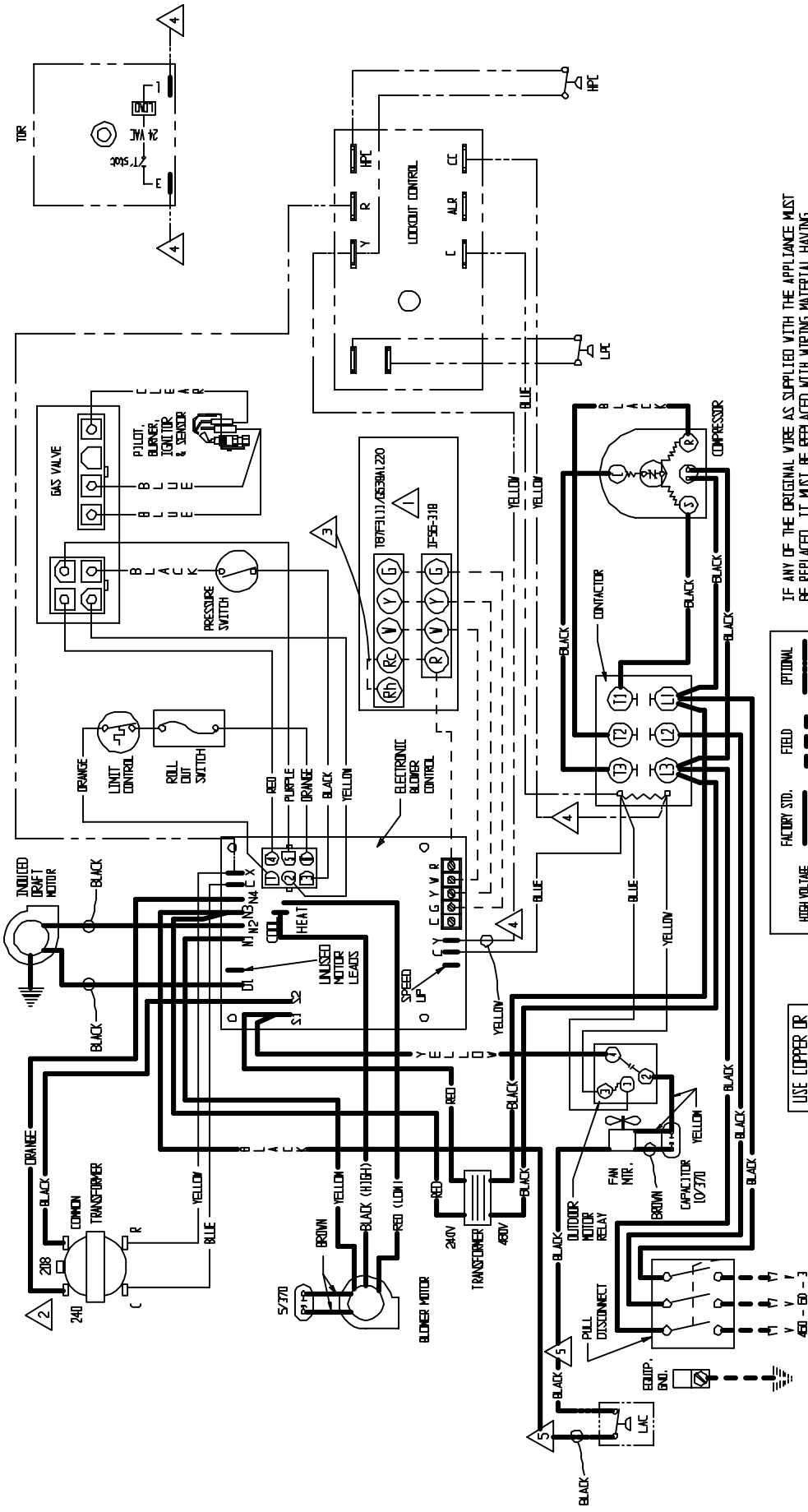


CONNECTION DIAGRAM
DANGER: ELECTRICAL SHOCK HAZARD,
DISCONNECT POWER BEFORE SERVICING



IF ANY OF THE ORIGINAL WIRE AS SUPPLIED WITH THE APPLIANCE MUST BE REPLACED, IT MUST BE REPLACED WITH WIRING MATERIAL HAVING A TEMPERATURE RATING OF AT LEAST 105°C EXCEPT THE IGNITION CABLE WHICH IS 250°C HIGH VOLTAGE CABLE.

FACTORY STD.	FIELD	OPTIONAL
HIGH VOLTAGE	---	---
LOW VOLTAGE	---	---
ACCESSORY	---	---

USE COPPER OR ALUMINUM WIRE

- 1. SET HEAT ANTICIPATOR AT .16 A.
- 2. FOR 208V OPERATION MOVE THIS WIRE TO 208V TRANSFORMER TAP.
- 3. ADD JUMPER RE - R7.
- 4. LABELLED WIRES CONNECT IF NO OPTIONS USED.
- 5.