

**COMPONENT CODE**

CB	CIRCUIT BREAKER
COMP	COMPRESSOR
CC	COMPRESSOR CONTACTOR
CCM	COMP. CONTROL MODULE
CR1	CONTROL RELAY #1
CR2	CONTROL RELAY #2
CR3	CONTROL RELAY #3
FCB	FURNACE CONTROL BOARD
FR	FLAME ROLLOUT
FS	FLAME SENSOR
FT	FREEZE THERMOSTAT
GND	GROUND
GV	GAS VALVE
HPC	HIGH PRESSURE CONTROL
IBC	INDOOR BLOWER CAPACITOR
IBM	INDOOR BLOWER MOTOR
IDB	INDUCED DRAFT BLOWER
LAC	LOW AMBIENT CONTROL
LPC	LOW PRESSURE CONTROL
DFC	OUTDOOR FAN CAPACITOR
DFM	OUTDOOR FAN MOTOR
PL1	2 PIN PLUG
PM	PHASE MONITOR
PRL	PRIMARY LIMIT
PS	PRESSURE SWITCH
RAT	RETURN AIR THERMOSTAT
SI	SPARK IGNITER
SL	SECONDARY LIMIT
SV	SOLENOID VALVE
T	TRANSFORMER
TB	TERMINAL BLOCK
TDR1	TIME DELAY RELAY #1
TDR2	TIME DELAY RELAY #2
TS	TERMINAL STRIP

**COLOR CODE**

BK	BLACK
BL	BLUE
BR	BROWN
GR	GRAY
O	ORANGE
PR	PURPLE
R	RED
W	WHITE
Y	YELLOW

**⚠ DANGER**  
 \* ELECTRIC SHOCK HAZARD  
 \* DISCONNECT POWER BEFORE SERVICING

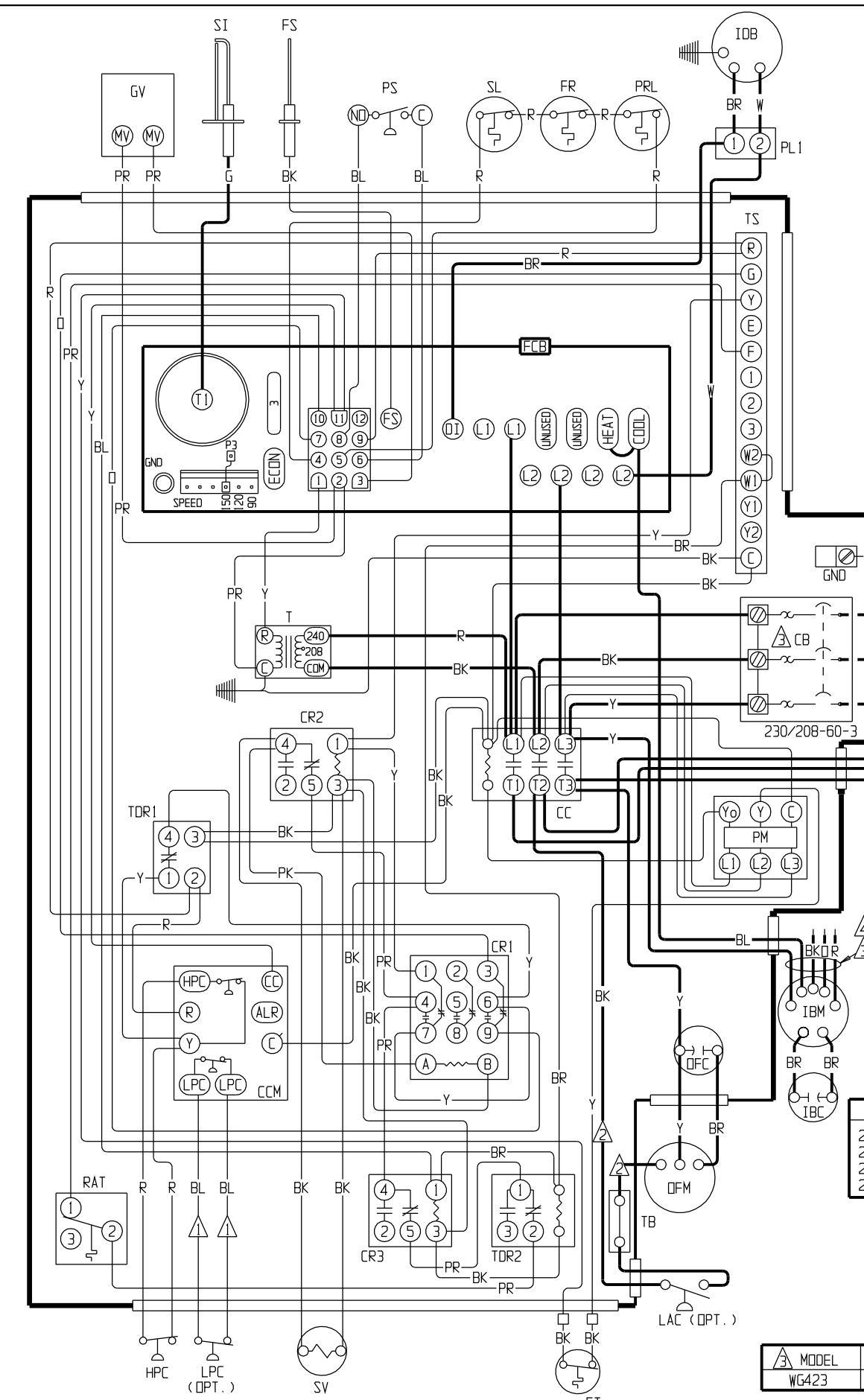
**WIRING CODE**

230/208 VAC FACTORY	—————
230/208 VAC FIELD	- - - - -
24 VAC FACTORY	—————
24 VAC FIELD	- - - - -

**BLOWER SPEED COLOR CODE**

HIGH	BLACK
MEDIUM HIGH	BLUE
MEDIUM LOW	PURPLE
LOW	RED
AUX.	ORANGE

	MODEL	COOL	HEAT	C. BREAKER
WG423		MED.	MED.	35 A



IF ANY OF THE ORIGINAL WIRE AS SUPPLIED WITH THE APPLIANCE MUST BE REPLACED, IT MUST BE REPLACED WITH WIRING MATERIAL HAVING A TEMPERATURE RATING OF AT LEAST 105°C EXCEPT THE IGNITION CABLE WHICH IS 250° HIGH VOLTAGE CABLE.

USE COPPER OR ALUMINUM WIRE

LABELED WIRES CONNECT IF NO OPTIONS USED

RED (LOW), PURPLE (MED. LOW) BLUE (MED. HIGH), BLACK (HIGH) WHERE APPLICABLE. ALL UNUSED LEADS TAPED OFF.