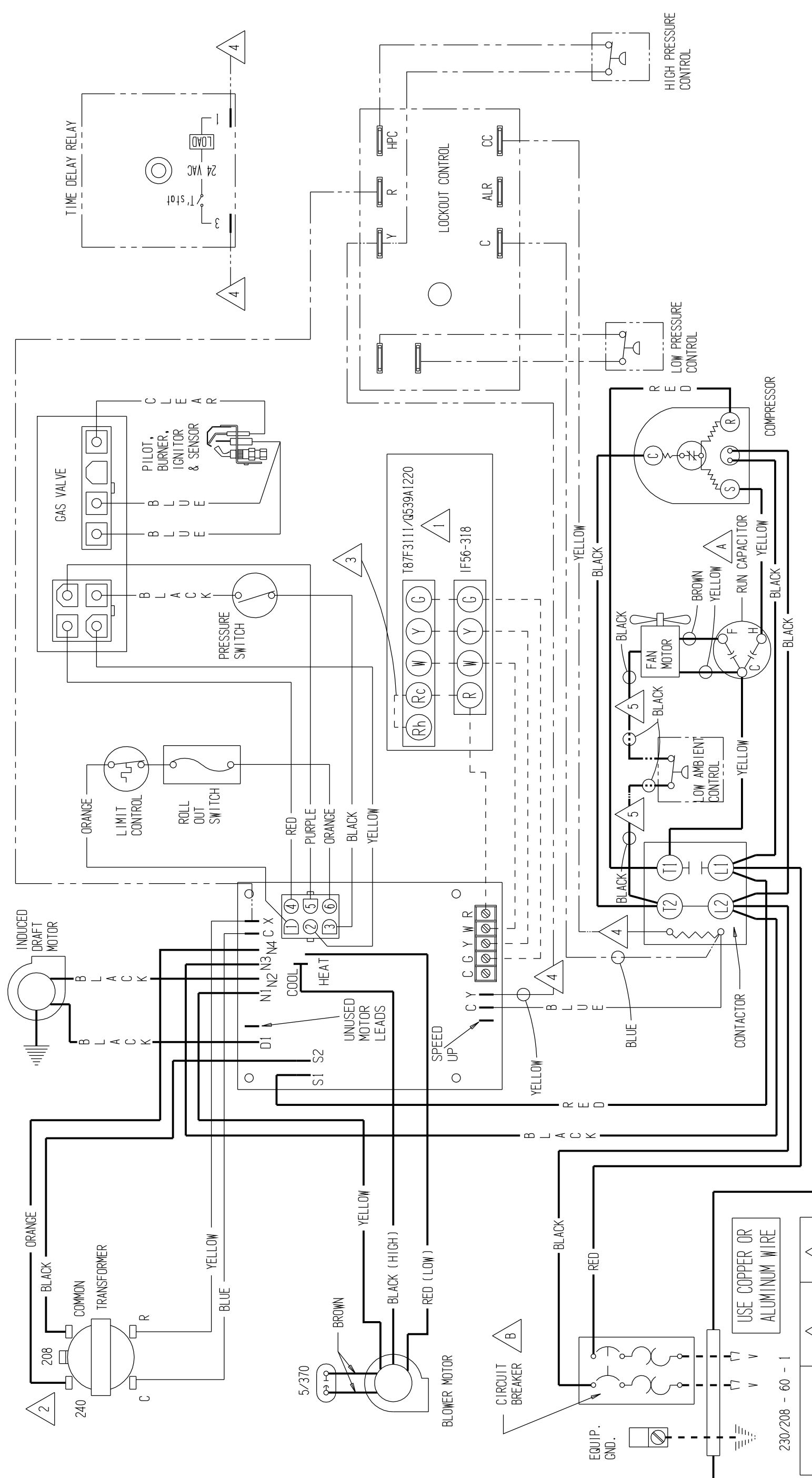


# CONNECTION DIAGRAM

**DANGER: ELECTRICAL SHOCK HAZARD,  
DISCONNECT POWER BEFORE SERVICING**



FACTORY STD.	FIELD	OPTIONAL
HIGH VOLTAGE	---	----
LOW VOLTAGE	---	----
ACCESSORY	---	----

MODEL	(A) RUN CAPACITOR	(B) CIRCUIT BREAKER
WAG300-A54C	35+5/370	35A
WAG360-A54C	40+10/370	40A
WAG400-A54C	40+10/440	45A

IF ANY OF THE ORIGINAL WIRE AS SUPPLIED WITH THE APPLIANCE MUST BE REPLACED, IT MUST BE REPLACED WITH WIRING MATERIAL HAVING A TEMPERATURE RATING OF ATLEAST 105°C EXCEPT THE IGNITION CABLE WHICH IS 250°C HIGH VOLTAGE CABLE.

1 SET HEAT ANTICIPATOR AT .6 A    2 FOR 208V OPERATION MOVE THIS WIRE TO 208V TRANSFORMER TAP    3 ADD JUMPER Rc - Rh    4    5 LABELLED WIRES CONNECT IF NO OPTIONS USED