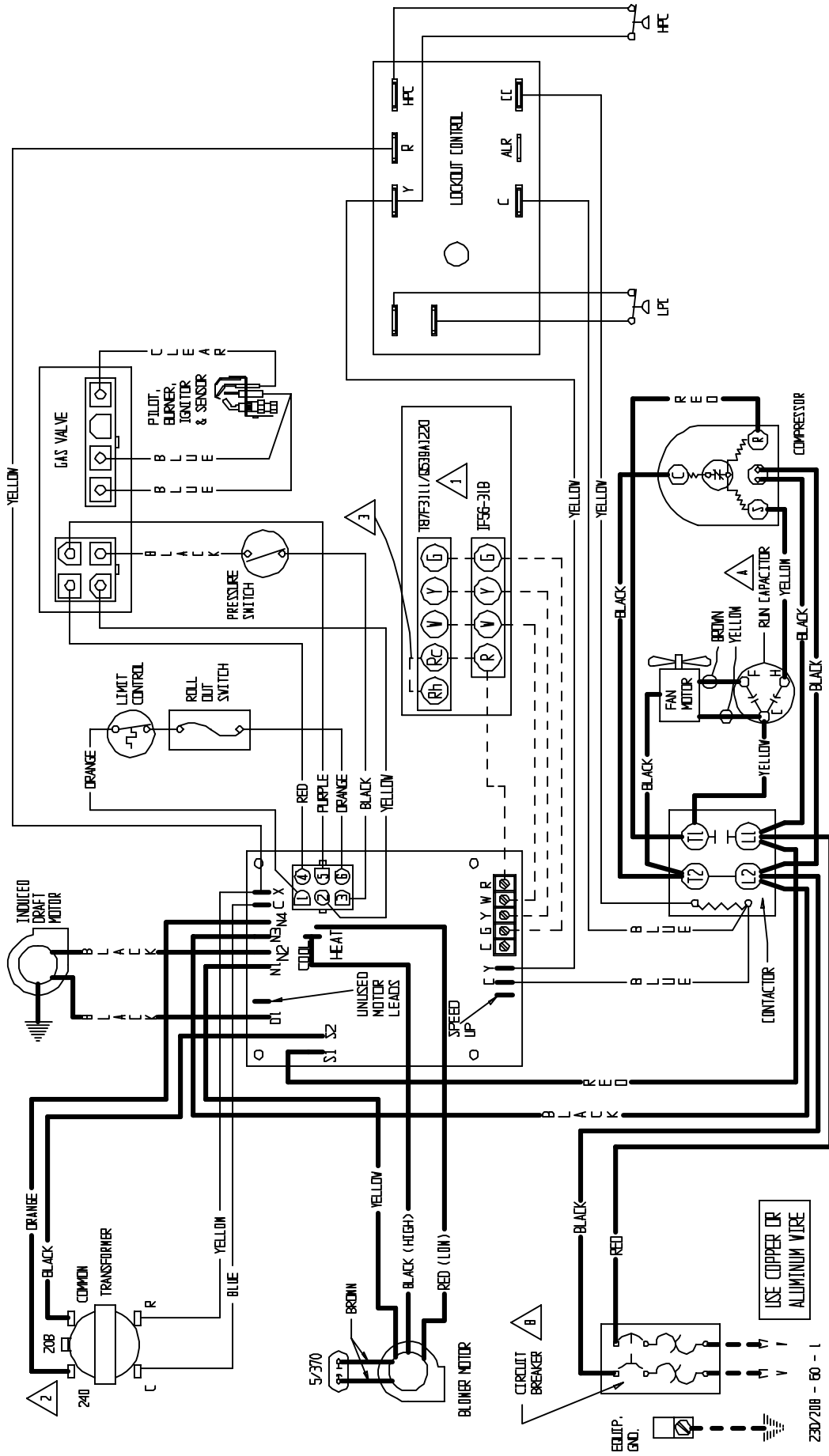


CONNECTION DIAGRAM

DANGER: ELECTRICAL SHOCK HAZARD, DISCONNECT POWER BEFORE SERVICING



MODEL	▲ RUN CAPACITOR	▲ CIRCUIT BREAKER
MA301P-AS4C	35-45/270	35A
MA330D-AS4C	40H-1D/270	40A
MA340-AS4C	40H-1D/440	45A

FACTORY WIRING	FIELD WIRING
Low Voltage	---
High Voltage	---

IF ANY OF THE ORIGINAL WIRE AS SUPPLIED WITH THE APPLIANCE MUST BE REPLACED, IT MUST BE REPLACED WITH WIRING MATERIAL HAVING A TEMPERATURE RATING OF ATLEAST 105°C EXCEPT THE IGNITION CABLE WHICH IS 250°C HIGH VOLTAGE CABLE.

- 1 SET HEAT ANTICIPATOR AT .6 ▲ 2 FOR 208V OPERATION MOVE THIS WIRE TO 208V TRANSFORMER TAP ▲ ADD JUMPER RC - Rn