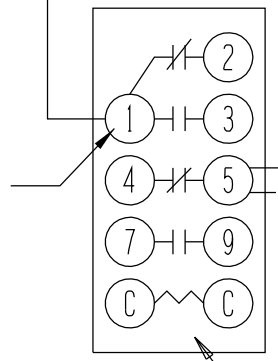
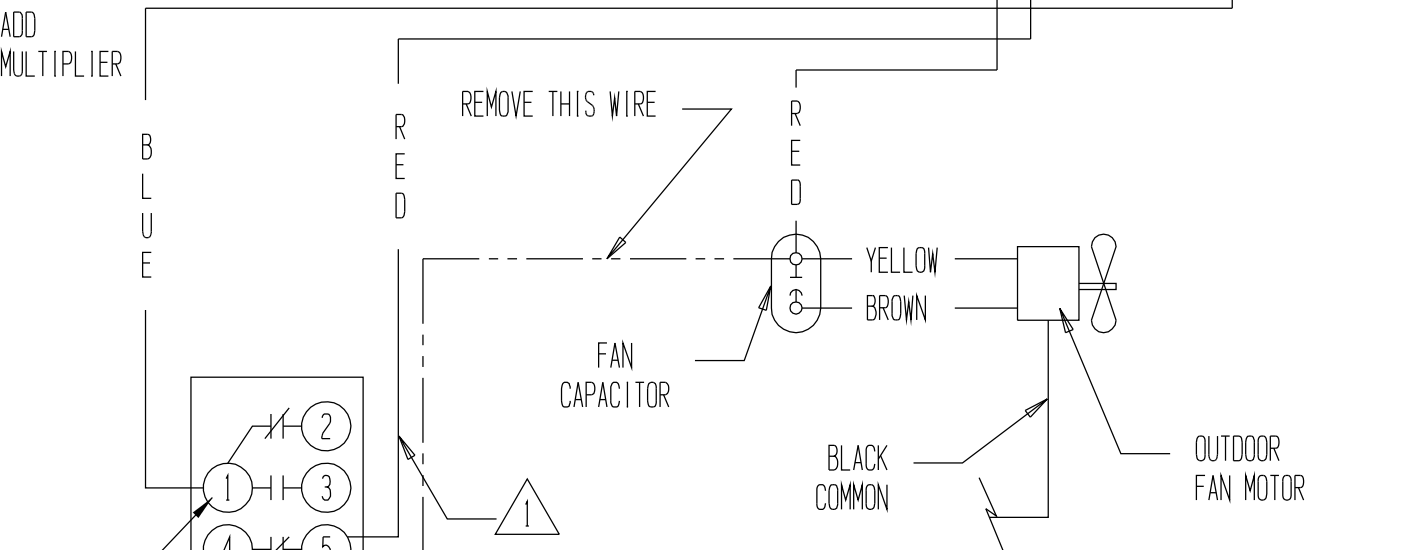
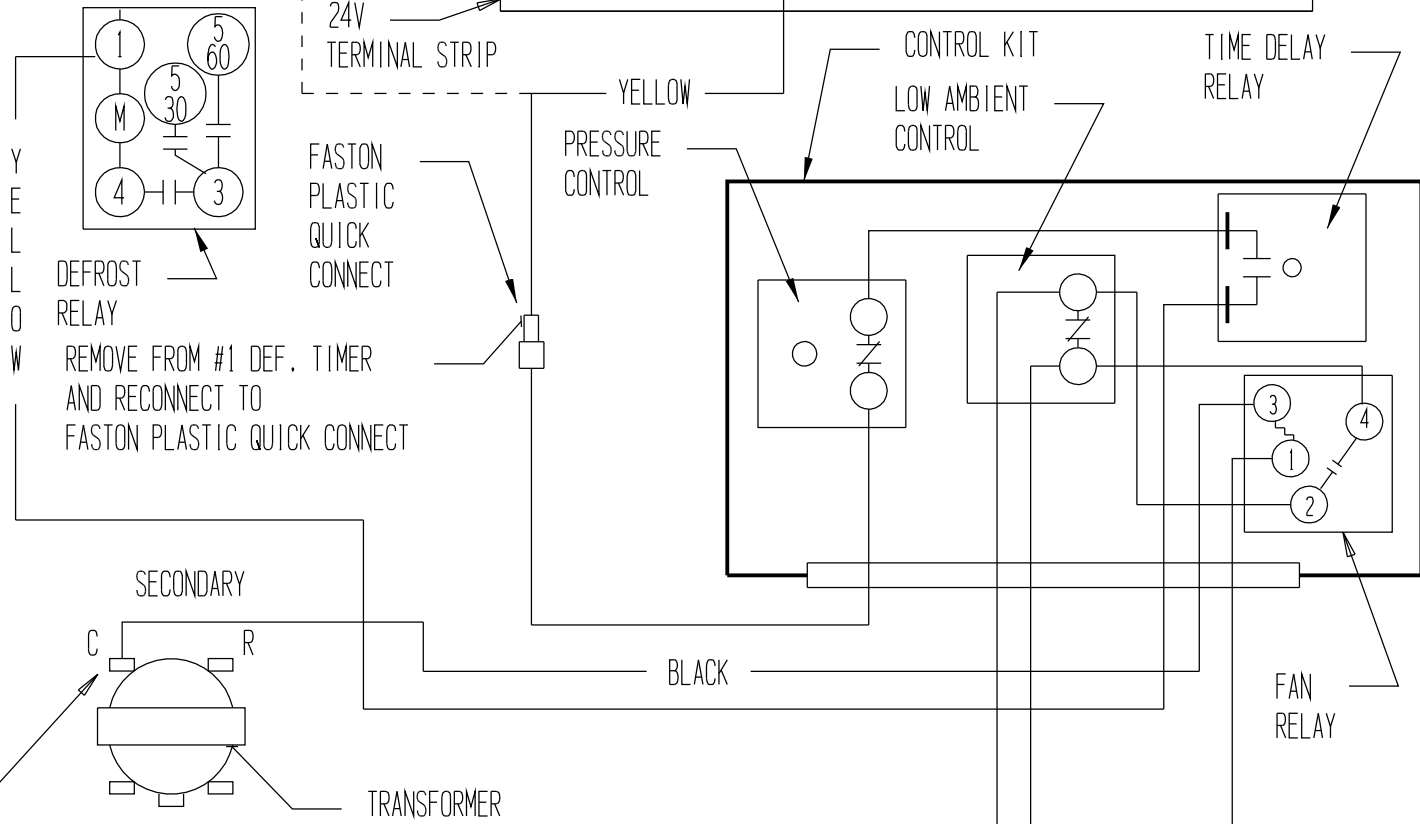


# CONTROL KIT TO BASIC UNIT CONNECTION DIAGRAM



1 THIS WIRE ATTACHES TO TERMINAL #2 OF THE 460V DEFROST RELAY ON 460 - 60 - 3

- THIS OPTIONAL CONTROL ACCESSORY HAS BEEN ADDED TO THIS UNIT -
- IF ECONOMIZER IS INSTALLED, CONTROL KIT IS LOCATED BEHIND COMPRESSOR PARTITION IN THE RETURN AIR OPENING -
- FACTORY WIRE TO BE REMOVED
- - - - - FACTORY WIRE TO BE RECONNECTED
- \_\_\_\_\_ FACTORY WIRING
- \_\_\_\_\_ FIELD WIRING CONNECTION