

**CONNECTION DIAGRAM**  
DANGER: ELECTRICAL SHOCK HAZARD  
DISCONNECT POWER BEFORE SERVICING.

FAN & LIMIT CONTROL

**CHART A (FACTORY SETTINGS)**

MODEL	INPUT RATE GPH	HEATING BLOWER SPEED (COLOR)	COOLING BLOWER SPEED (COLOR)	TEMP. RISE RANGE
FLF085D360	.65	LOW (RED)	HIGH (BLACK)	60°-90°
FLR085D360	.75	MED (BLUE)	HIGH (BLACK)	60°-90°
FLF110D480	.85	MED-LOW (ORANGE)	HIGH (BLACK)	60°-90°
FLR110D480	1.00	MED-HIGH (BLUE)	HIGH (BLACK)	60°-90°
FLR140D600	1.10	MED-LOW (ORANGE)	HIGH (BLACK)	60°-90°
	1.25	MED-HIGH (BLUE)	HIGH (BLACK)	60°-90°

**CHART B (COOLING BLOWER SPEEDS)**

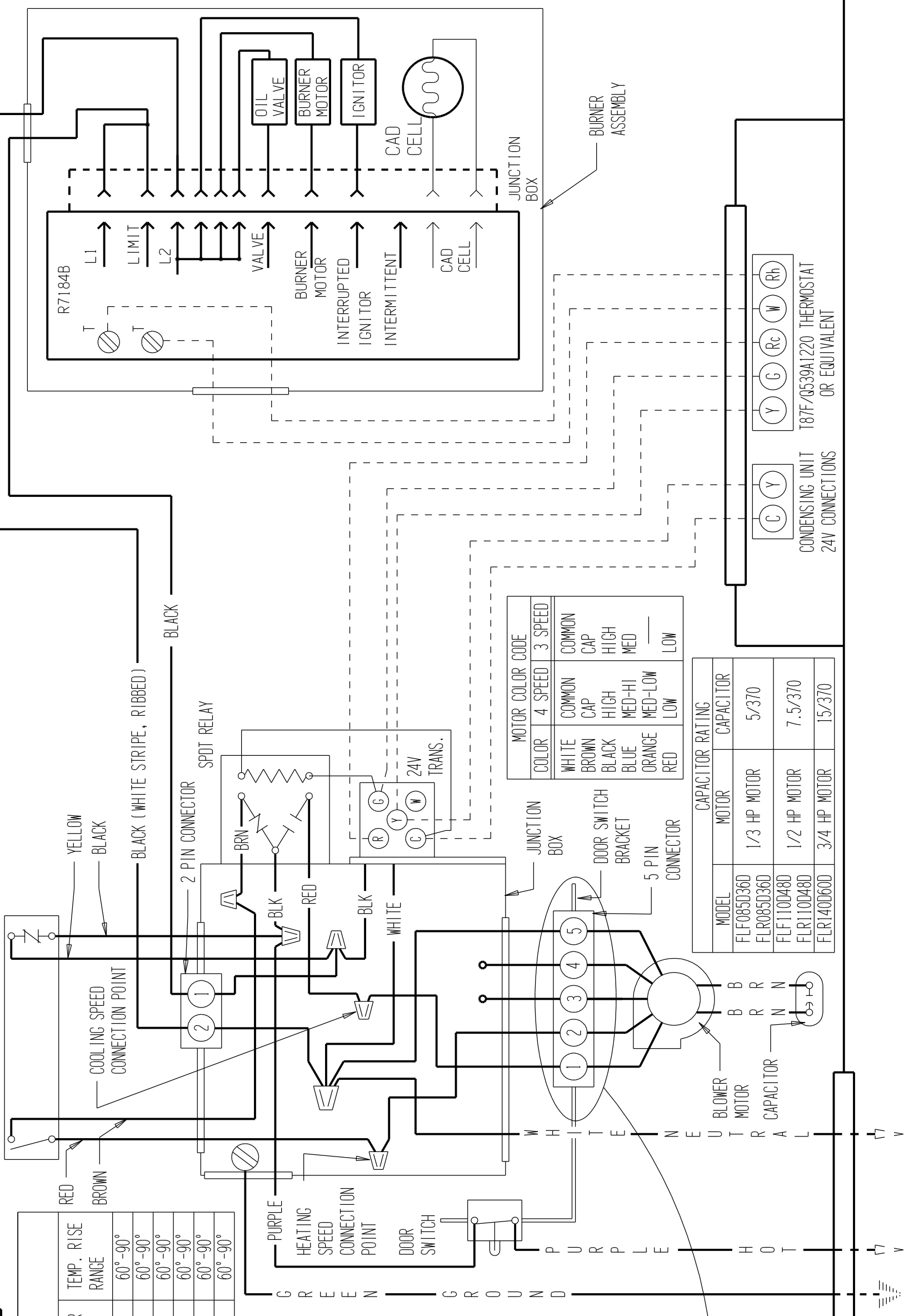
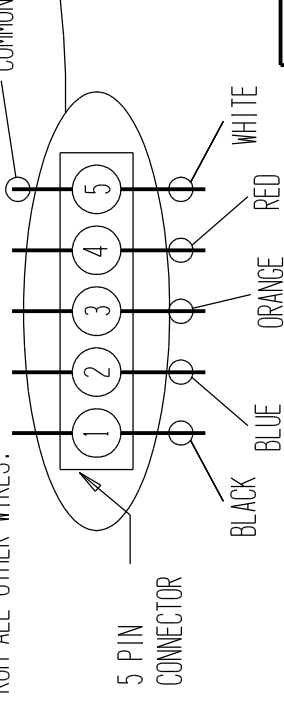
MODEL	NOMINAL AC (TONS)	SPEED (COLOR)	CFM @ .50" WC
FLF085D360	2	LOW (RED)	775
FLR085D360	2.5	MED (BLUE)	1070
	3	HIGH (BLACK)	1230
FLF110D480	2.5	LOW (RED)	1065
	3	MED-LOW (ORANGE)	1235
FLR110D480	3.5	MED-HIGH (BLUE)	1415
	4	HIGH (BLACK)	1635
	3	LOW (RED)	1190
FLR140D600	3.5	MED-LOW (ORANGE)	1400
	4	MED-HIGH (BLUE)	1640
	5	HIGH (BLACK)	2250

SPEED TAPS AVAILABLE FOR HEATING AND COOLING INPUT RATINGS.

SEE CHARTS A AND B.

NOTE: ONLY ONE HEATING AND ONE COOLING SPEED CAN BE CONNECTED.

THE OTHER SPEED TAPS MUST BE TAPED OFF INDEPENDENTLY FROM ALL OTHER WIRES.



115-60-1

IF ANY OF THE ORIGINAL WIRE AS SUPPLIED WITH THE APPLANCE MUST BE REPLACED, IT MUST BE REPLACED WITH WIRING MATERIAL HAVING A TEMPERATURE RATING OF AT LEAST 105 DEG C.

