

SUPPLEMENTAL INSTRUCTIONS

LV1000, HR35/36/58 FUSION-TEC® PLC Core Type Identification

Instructions

IMPORTANT: Bard recommends the use of personal grounding straps to prevent static electricity shorts to electronic controls.

To identify the software and core types of the PLC, use either the PLC label identification method or the directions that follow to identify the software type and core type from the PLC controller interface.

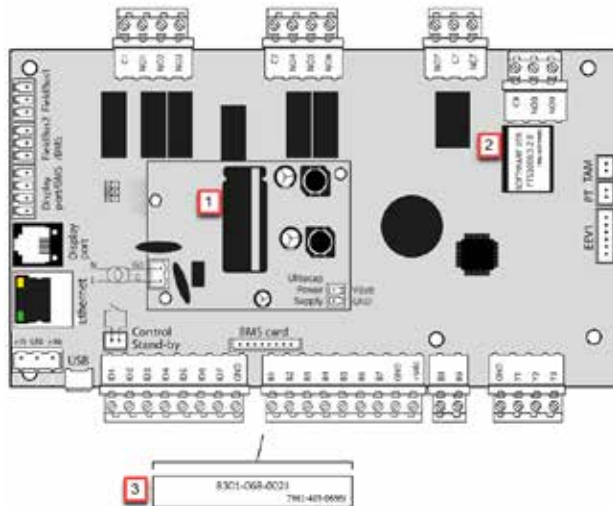
Identifying Software and Core Type from PLC Labeling

The easiest way to identify the software and core type of the PLC is to refer to the labeling on the PLC board (see Figure 1). Core 0 boards are labeled with *white* software version and part number labels. Core 2 PLC boards are labeled with *yellow* software version, core type and part number labels (see Figure 1).

FIGURE 1
PLC Label Identification

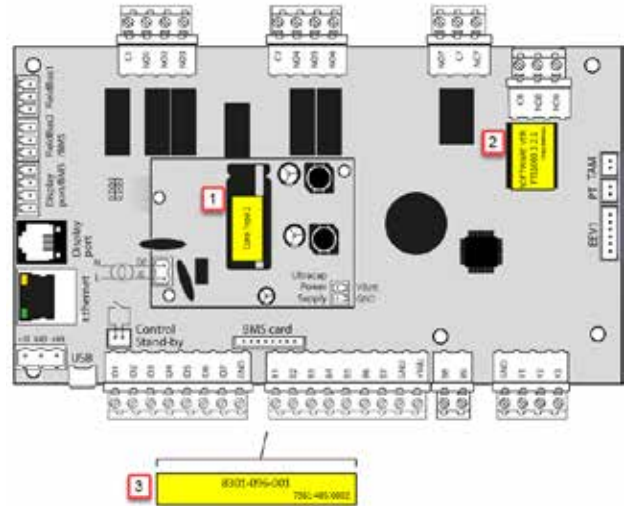
Core 0 Identifiers

1. No Core Type ID on capacitor or Core Type ID is printed on *white* paper label.
2. Software Version Label is printed on *white* paper label.
3. PLC Part Number Label is printed on *white* paper label.



Core 2 Identifiers

1. Core Type ID Label on capacitor printed on *yellow* paper label.
2. Software Version Label is printed on *yellow* paper label.
3. PLC Part Number Label is printed on *yellow* paper label.



Bard Manufacturing Company, Inc.
Bryan, Ohio 43506
www.bardhvac.com

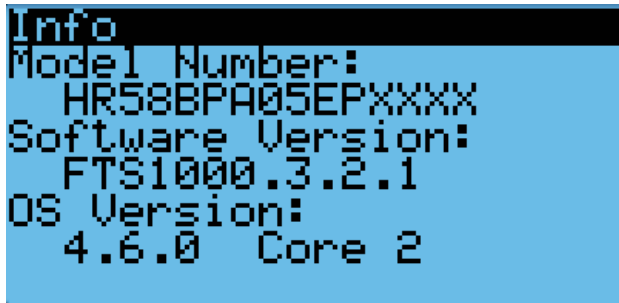
Manual: 7960-885
Supersedes: **NEW**
Date: 6-11-20

Identifying Software and Core Type from PLC Controller Interface

FUSION-TEC Wall-Mount Unit

1. Connect the TEC-EYE diagnostic tool to the control board located in the unit.
2. From the Main screen, press UP or DOWN button until Quick Menu displays the “I” icon. Press ENTER button.
3. Press UP or DOWN button until the software version screen is displayed (see Figure 2).

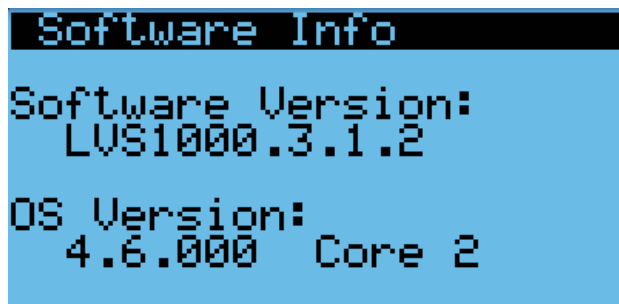
FIGURE 2
FUSION-TEC HR Series Software Info



LV1000 Controller

1. From the Main screen, press UP or DOWN button until Quick Menu displays the “I” icon. Press ENTER button.
2. Press UP or DOWN button until the cursor highlights the System Info Menu. Press the ENTER button.
3. Press UP or DOWN button until the software version screen is displayed (see Figure 3).

FIGURE 3
LV1000 Software Info



When determining the proper software to download from the webpage, refer to the **Software Versioning Guide**.

Software Versioning Guide

SoftwareName.X.Y.Z_Core#

Software Name: The name of the software is the base part number used to identify which product the software is used in.

TABLE 1
Software Names

Product	Software Name
LV1000	LVS1000
FUSION-TEC (HR)	FTS1000

- X The letter X represents a major change to the software effecting product compatibility or function of the equipment.
- Y The letter Y represents a minor change to the software that either adds, removes, or alters a feature of the equipment without effecting compatibility with other products.
- Z The letter Z represents a change to the software that fixes existing features or user interface.

Core: This identifier is only shown in the software download package. It identifies the processor core type of the PLC and can only be used in a PLC with the corresponding processor core type.

Compatibility

Core 0 and Core 2 boards can be used within the same working system. It is feasible to have an LV1000 with a Core 2 PLC operating both Core 0 and Core 2 PLC-based wall-mount units and vice versa. However, Core 0 software cannot be installed on a Core 2 PLC and likewise, Core 2 software cannot be installed on a Core 0 PLC.