

Bard®

SINCE 1914

Climate Control Solutions

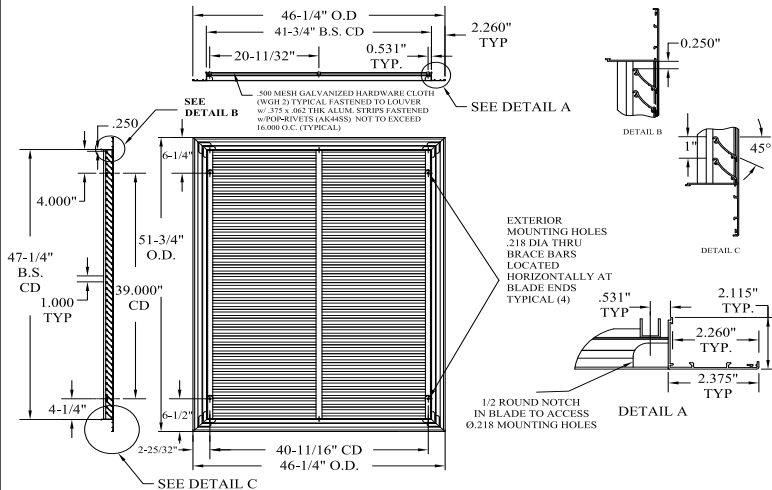
Bard Model ILA2

Bard 2" Deep I-TEC® Architectural Louver

SUSTAINABLE EXTRUDED ALUMINUM

Dimensions are in inches

MODEL ILA2



An attractive mechanical air louver with sight-shading through the exclusive "J" blade design.

DESCRIPTION:

ILA2: This model offers a very rich louver design combined with the strength desired in many high traffic applications. Constructed of sustainable mill finish 6063 alloy with a high performance powder coat finish and 0.80" aluminum extrusions, it is both beautiful and strong. The ILA2 will enhance design while assuring the I-TECs performance ratings.

Features Include:

- Bard's engineering lab design and testing assures the rated ventilation and efficiency performance of the I-TEC product.
- Our exclusive "J" blade design offers line-of-sight shading for a clean, non-mechanical appearance.
- The louver is flange framed and 2" deep.
- Two inch 0.80" blade extrusions coupled with mechanical bonding offer a louver that is much stronger than typical 1" louvers.

STANDARD COLORS:

- #10 - Aluminum
- #20 - Medium Bronze
- #30 - Dark Bronze

OPTIONAL COLORS:

- #12 - Artic White
- #14 - Storm White
- #18 - Milano Beige
- #40 - School Bus Yellow
- #42 - Florida Orange
- #44 - School House Red
- #46 - Chili Red
- #50 - Deep Sea Blue
- #52 - Bahama Blue
- #54 - Ivy Green
- #56 - Sage Green
- #32 - Jet Black
- #36 - Graphite Grey

CUSTOM COLOR: #75-Custom (Sample Attached)

PROJECT:

ENGINEER:

CONTRACTOR:

DATE

SERIES

DRAWING NO.