

---

# SUPPLEMENTAL INSTRUCTIONS

---

## Software Update for: LC6000 Controller MULTI-TEC® Wall-Mount Unit (W\*\*AAP, W\*\*LAP) WR36/58 FUSION-TEC® Wall-Mount Unit (WR36AP, W58AP) MEGA-TEC™ Wall-Mount Unit (W120A\*)

---

These instructions detail the software update process for the following products:

- LC6000 supervisory controller
- MULTI-TEC wall-mount unit
- WR36/58 FUSION-TEC wall-mount unit
- MEGA-TEC wall-mount unit

### Tools and Supplies Needed

- Laptop computer
- Appropriate USB cable (see Figure 1)
- TEC-EYE™ hand-held diagnostic tool
- Personal anti-static grounding strap

### INSTRUCTIONS

**IMPORTANT:** Bard recommends the use of personal grounding straps to prevent static electricity shorts to electronic controls.

1. Begin the software update process by downloading the update from the Bard website.
  - A) Go to <http://bardhvac.com/software-download/> and select the link for appropriate software download.
  - B) Click on selected link; download will begin. The files that are downloaded will be in a zipped folder. Once downloaded, right click on the zipped file, and select "extract all". If a window prompt appears select "OK" or "EXTRACT" and press Enter.

FIGURE 1



USB Cable Male A to  
Micro Male B  
(Wall-Mount Unit)



USB Cable Male A to  
Male A  
(Controller)



TEC-EYE Diagnostic Tool with Cable



Climate Control Solutions

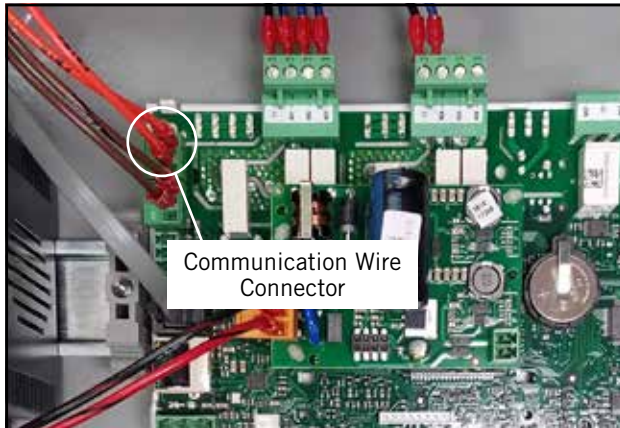
Bard Manufacturing Company, Inc.  
Bryan, Ohio 43506  
[www.bardhvac.com](http://www.bardhvac.com)

Manual: 7960-795D  
Supersedes: 7960-795C  
Date: 1-28-19

C) The files have now been extracted and a new window with the files should automatically open. These files are ready to be transferred to the controller. (It may help to leave this window open and separate until the update is complete.)

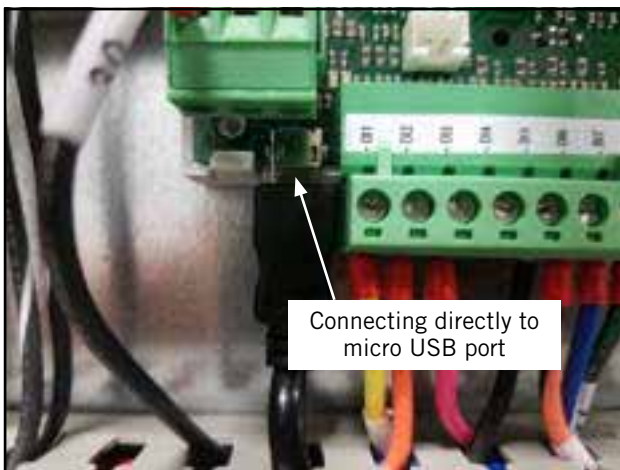
2. **IMPORTANT:** Disconnect communication wires (unplug the connector) from controller PLC board (see Figure 2).

**FIGURE 2**

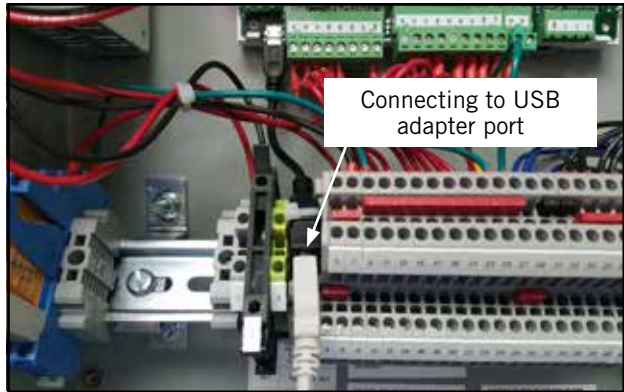


3. Connect proper USB cable from laptop computer to micro USB port on control board (see Figure 3) or USB adapter port (see Figure 4), depending on whether the LC controller or wall-mount unit control board is equipped with a short USB adapter cable.  
**NOTE:** Use caution when connecting micro USB directly to micro USB port. Too much stress on the port being pulled in any direction can lead to damage of the board.

**FIGURE 3**



**FIGURE 4**



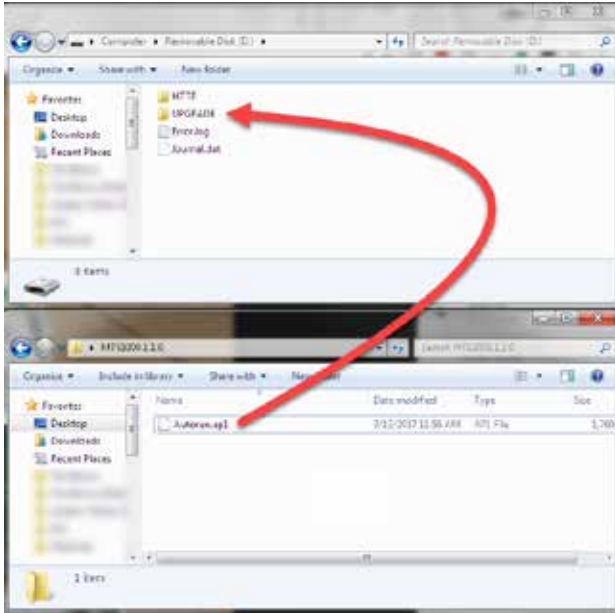
4. If updating software on wall-mount unit, connect TEC-EYE to the modular phone connector on wall-mount unit control board.
5. When USB Autoplay window appears on laptop screen, select "Open folder to view files" (see Figure 5).

**FIGURE 5**



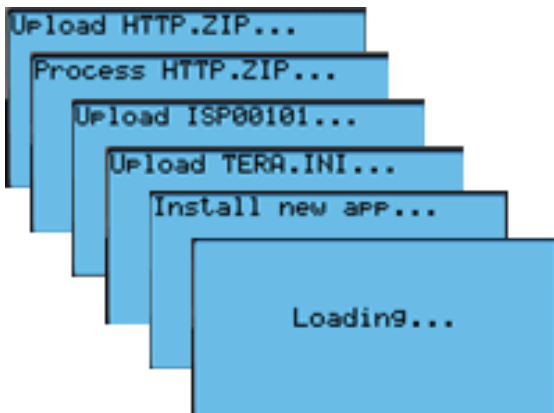
6. Drag and drop new software (filename Autorun.ap1) from local computer into the UPGRADE folder on control board (see Figure 6).

FIGURE 6



7. Once file transfer has completed, disconnect the USB cable from laptop computer and control board and wait for new program to install; this will happen automatically. The TEC-EYE or controller screen will display many different install status messages as it updates (see Figure 7). Continue to wait until the Bard logo appears. When the Bard logo is no longer present, the controller has been updated and will start running the new program.

FIGURE 7



8. **Wall-Mount Units Only:** After the software update is complete, verify that the model number and serial number in the program match the model number and serial number on the wall-mount unit nameplate (see Figure 8 on page 4). If they do not match, change the model/serial numbers to match, as some program features are dependent on these values. See appropriate wall-mount unit installation instructions for information on model nomenclature.

The model and serial numbers can be found in the program main menu under **Adv Sys Config**. Accessing this information in the TEC-EYE requires the engineer level password to change. Consult the appropriate wall-mount unit manual for default passwords.

9. Verify all system parameters and change passwords if required.
10. Disconnect TEC-EYE from wall-mount unit control board (if applicable).
11. Disconnect power for 10 seconds to PLC boards of controller and/or wall-mount units that were updated. Reconnect power.
12. Reconnect communication wire connector to controller PLC board that was disconnected in Step 2 (see Figure 2).

This completes the software update process.

FIGURE 8



BARD MANUFACTURING CO. INC. . 1914-RANDOLPH DRIVE. BRYAN, OHIO 43506 U.S.A

MODEL	(1) APPROVED HEATER PACKAGE	VAC	HZ	PH	SINGLE CIRCUIT MINIMUM CIRCUIT AMPACITY	(2) CIRCUIT MAX. FUSE OR CKT. BREAKER	DUAL CIRCUIT MINIMUM CIRCUIT AMPACITY	(2) CIRCUIT MAX. FUSE OR CKT. BREAKER
							CKT.A/CKT.B	CKT.A/CKT.B
( ) W72LAPA02	MNCB-09AL	230/208	60	1	58	60	N/A	N/A
( X ) W72LAPA055PXXC	EHW6TA-A05L	230/208	60	1	58	60	N/A	N/A
( ) W72LAPA10	EHW72A-A10LB	230/208	60	1	62	70	58/26	60/30
( ) W72LAPA15	EHW72A-A15LB	230/208	60	1	88	90	58/52	60/60

Model Number: Note the selection of the (X)

Serial Number

SHORT-CIRCUIT CURRENT: 5KA RMS SYMMETRICAL

BRANCH CIRCUIT SELECT CURRENT 36.9 OPERATING VOLTAGE RANGE: 197 VAC MIN. 253 VAC MAX.

SERIAL NUMBER **403J163347418-01** ASSEMBLED IN THE U.S.A.

SUITABLE FOR OUTDOOR USE ALL MOTORS ARE THERMALLY OR ELECTRICALLY PROTECTED

	VAC	HZ	PH	ELECTRICAL RATINGS			LRA	RLA
				HP	FLA			
COMPRESSOR	230/208	60	1				185/185	27 7/30 4
OUTDOOR MOTOR	230/208	60	1	1/3	4 0			
INDOOR MOTOR	230/208	60	1	3/4	5 3			
WEV-A5A	230/208	60	1		2 2	(OPTIONAL)		
HEATER PACKAGE				KW	FLA			
EHW6TA-A05L	240/208	60	1	5/3 75	20 8/18 1			
EHW72A-A10LB	240/208	60	1	10/7 5	41 6/36 2			
EHW72A-A15LB	240/208	60	1	15/11 25	62 5/54 1			

Conforms to Heating and ANSI/UL 1995

ETL Intertek 3158039

FACTORY CHARGED R410A 141 OZ. DESIGN PRESSURE PSIG 448 HIGH 236 LOW

FACTORY REFRIGERANT

CLEARANCES

UNIT CASING SUITABLE FOR 0 INCH CLEARANCE

OUTLET DUCT CLEARANCE 1/4 INCH MINIMUM FOR AT LEAST FIRST 3 FEET OF DUCT REFER TO INSTALLATION INSTRUCTIONS FOR ADDITIONAL CLEARANCE INFORMATION

THIS MODEL HAS BEEN TESTED AT STATIC PRESSURES FROM 0 TO 5 IN WATER COLUMN CONSULT INSTALLATION INSTRUCTIONS FOR MAXIMUM PERMITTED STATIC PRESSURE FOR SPECIFIC EQUIPMENT APPLICATION

MAXIMUM OUTLET AIR TEMPERATURE 200 DEG. F.