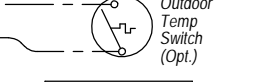
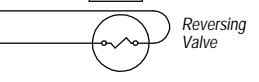
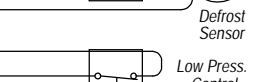
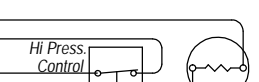
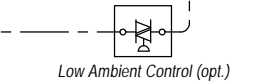
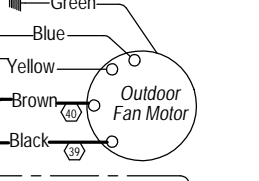
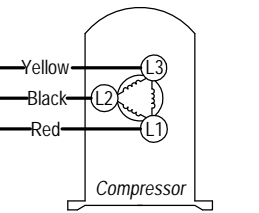
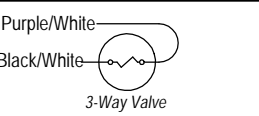


For Vent Wiring or controller/thermostat connections, see literature packet or go to [www.bardhvac.com](http://www.bardhvac.com)

Ground Lug (11)

R Vent option only



Condenser Section

**WARNING**  
USE COPPER CONDUCTORS ONLY SUITABLE FOR AT LEAST 75° C.

**DANGER**  
ELECTRICAL SHOCK HAZARD  
DISCONNECT POWER BEFORE SERVICING.

	Factory	Field	Optional
High Voltage			
Low Voltage			

Wire Identification numbers for Bard use only.  
**4100-327 F**

**WARNING**  
Same Letter Designated Wires Connect if Option Not Used  
"A" & "C" No Control Option  
"B" Only Freeze Stat & No ODT

NOTE: JUMPER PLUG MUST BE INSTALLED WHEN NO VENT OPTION IS INSTALLED