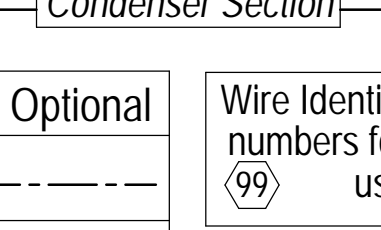
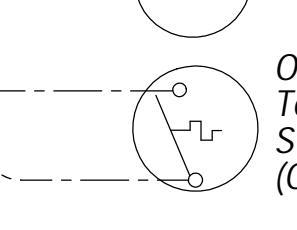
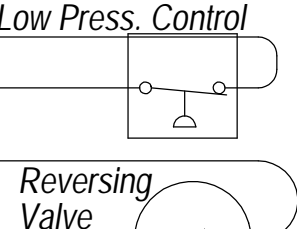
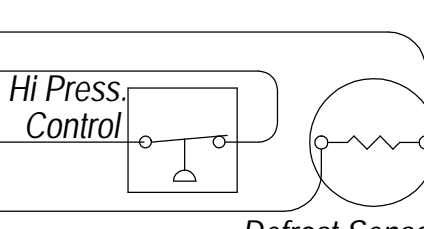
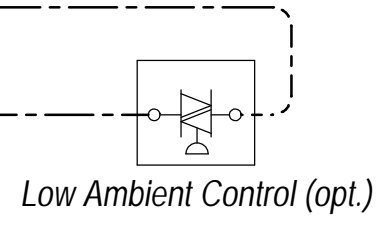
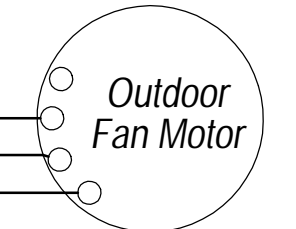
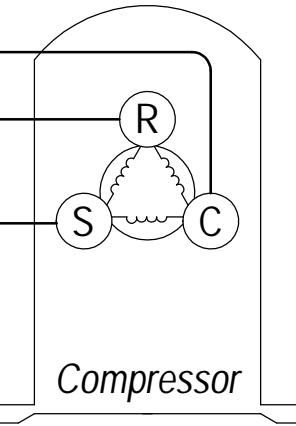
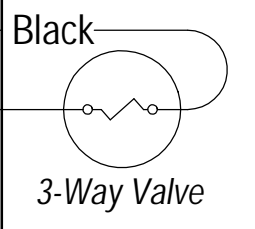
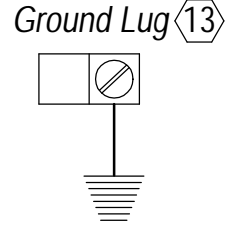


For Vent Wiring or controller/thermostat connections, see literature packet or go to www.bardhvac.com

230/208-60-1
Per Nameplate

Hi Voltage Field Connection



Condenser Section

WARNING
USE COPPER CONDUCTORS
ONLY SUITABLE FOR AT LEAST
75° C.

DANGER
*ELECTRICAL SHOCK HAZARD
*DISCONNECT POWER BEFORE
SERVICING.

A → **A**
Same Letter Designated
Wires Connect if Option Not Used
"A" No Control Option
"B" & "C" Only LAC Option

NOTE: JUMPER PLUG MUST BE INSTALLED
WHEN NO VENT OPTION IS INSTALLED

	Factory	Field	Optional
High Voltage			
Low Voltage			

Wire Identification
numbers for Bard
use only.
4096-190 A