
REPLACEMENT PARTS MANUAL

Commercial Room Ventilator

Models:

CRVS-3 CRVS-5 CRVMWH-3
CRVP-3 CRVP-5
CRVP-3L CRVP-5L

General Notes

- Revised and/or additional pages may be issued from time to time.
- A complete and current manual consists of pages shown in the following contents section.

Important

- Contact the installing and/or local Bard distributor for all parts requirements. Be sure to have the complete model and serial number available from the unit rating plates.

Contents

| <u>Description</u> | <u>Page</u> |
|----------------------------------------|-------------|
| Functional and Cabinet Components | |
| ♦ CRVS-3, CRVMWH-3 Exploded View | 2 |
| ♦ CRVP-3, CRVP-3L Exploded View | 3 |
| ♦ CRVS-5 Exploded View | 4 |
| ♦ CRVP-5, CRVP-5L Exploded View | 5 |
| ♦ Usage List | 6 |



Climate Control Solutions

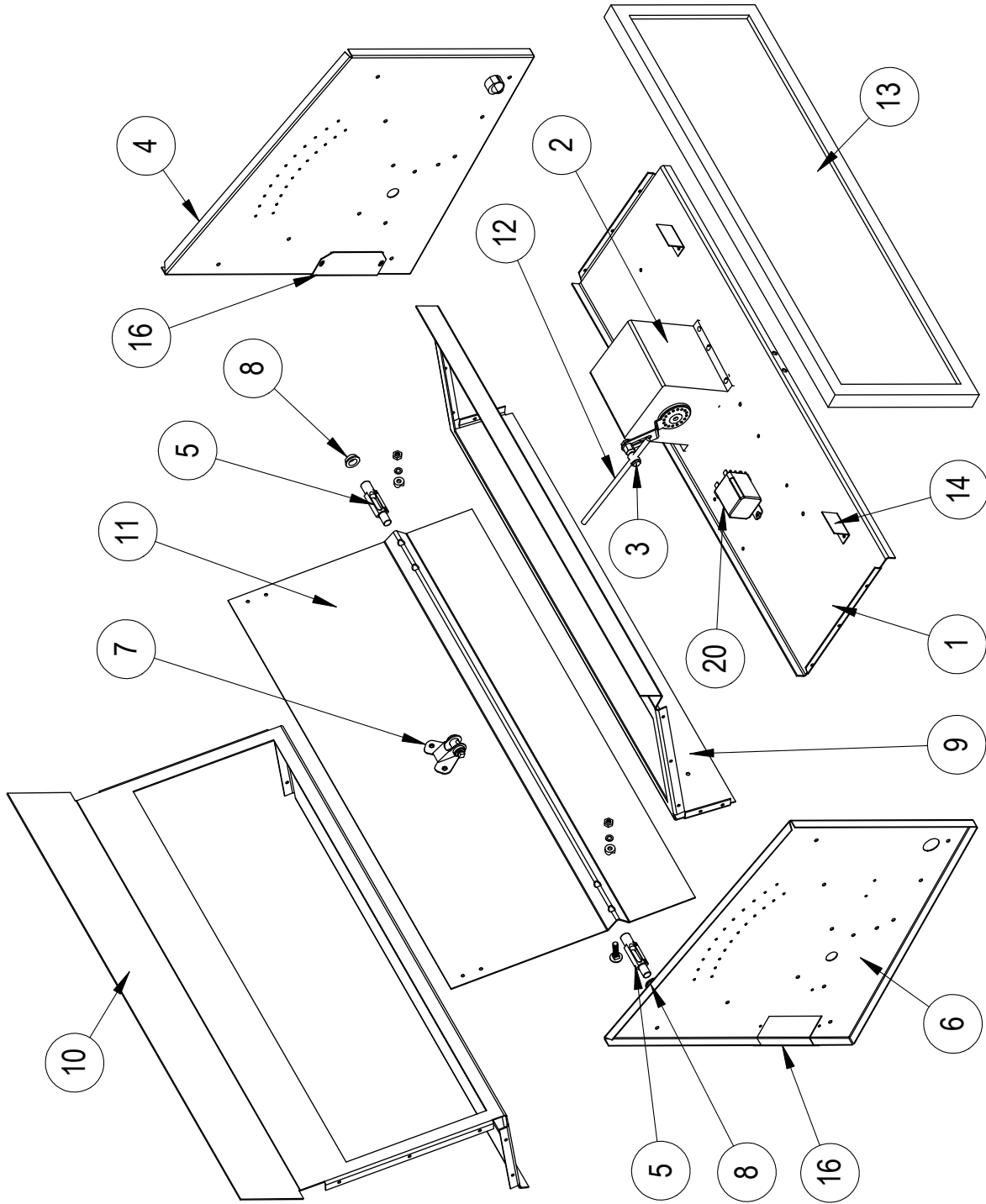
Bard Manufacturing Company, Inc.
Bryan, Ohio 43506
www.bardhvac.com

Manual: 2110-684E
Supersedes: 2110-684D
Date: 5-1-20

FUNCTIONAL and CABINET COMPONENTS

SEXP-437 A

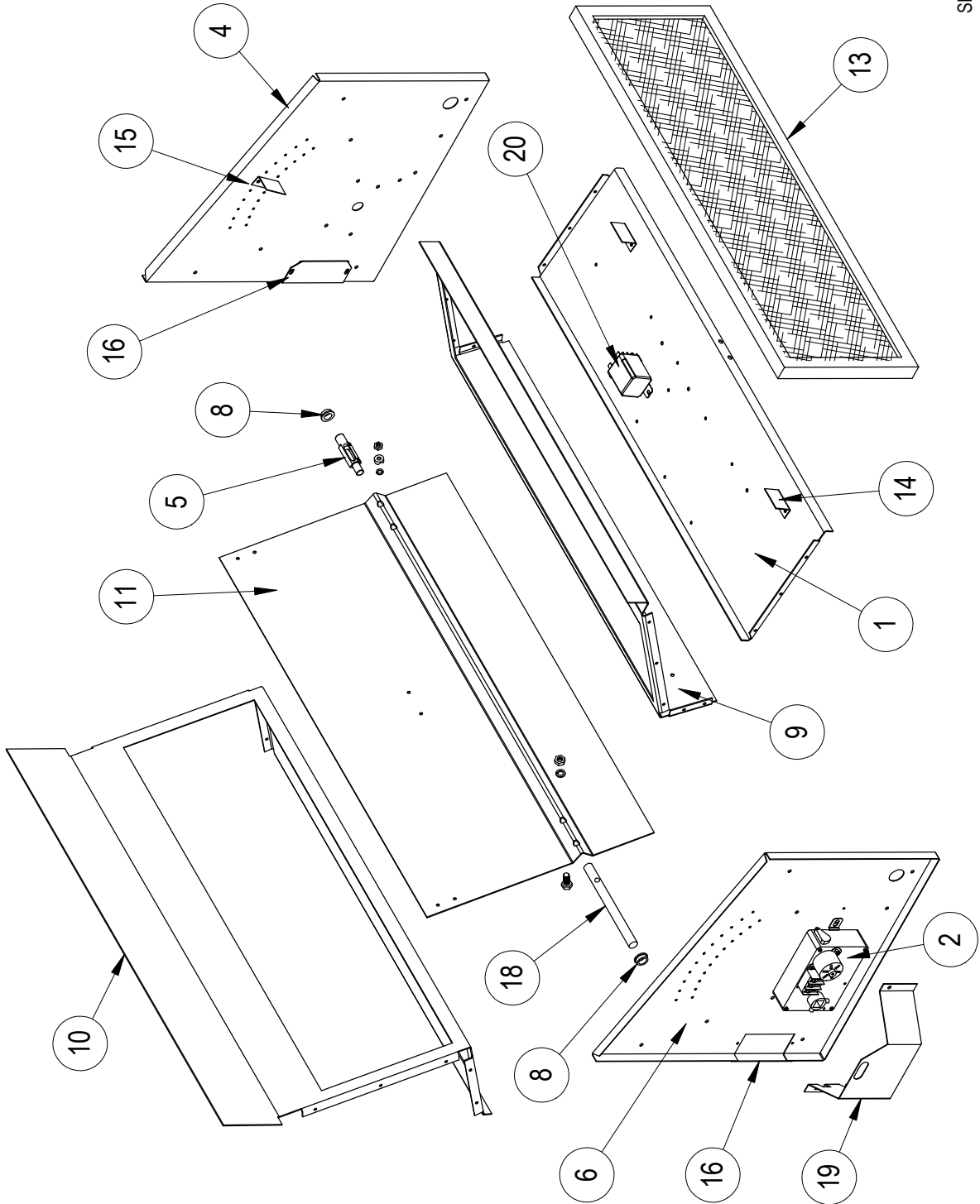
CRVS-3, CRVMWH-3



FUNCTIONAL and CABINET COMPONENTS

SEXP-438

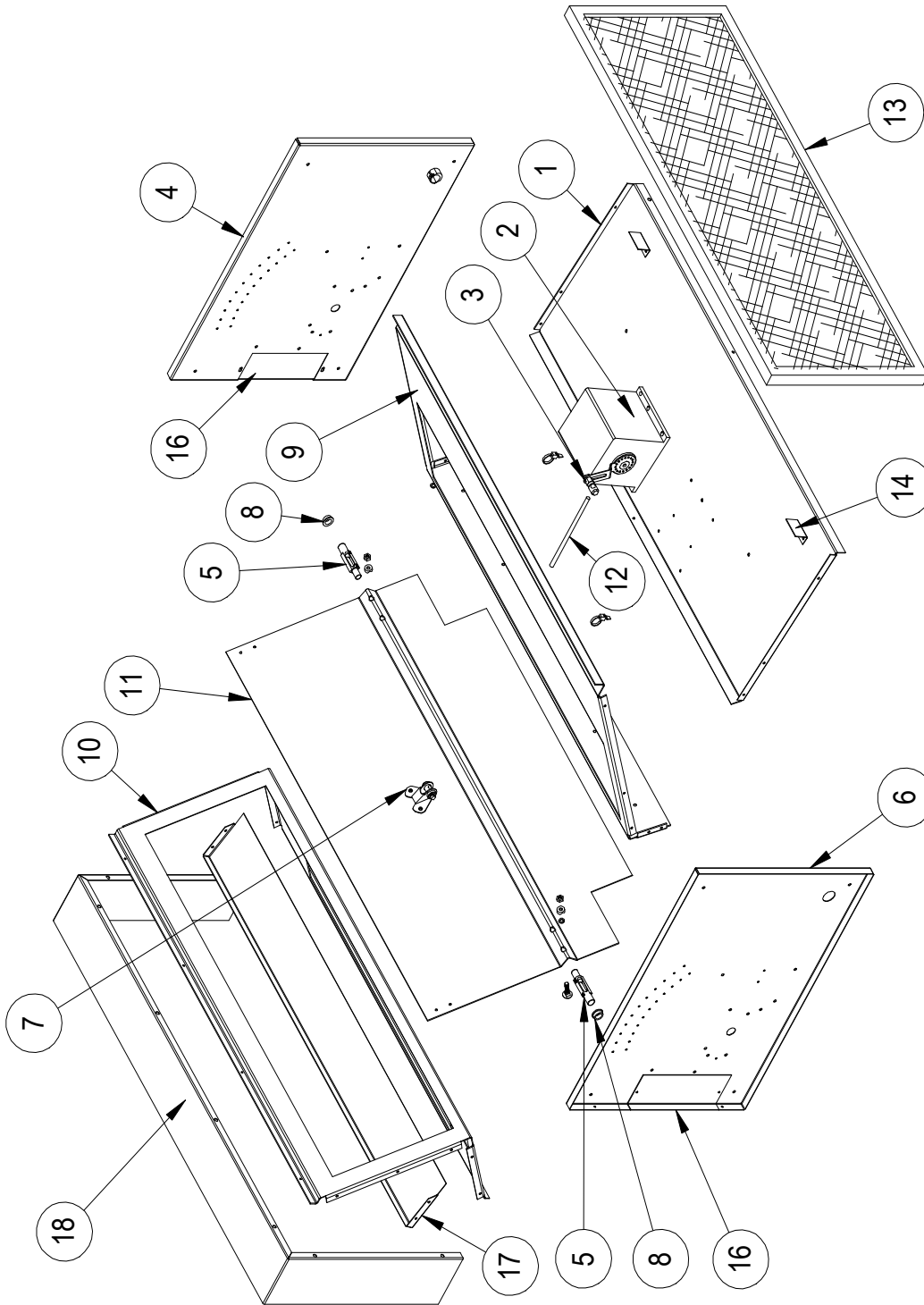
CRVP-3, CRVP-3L



FUNCTIONAL and CABINET COMPONENTS

SEXP-439 A

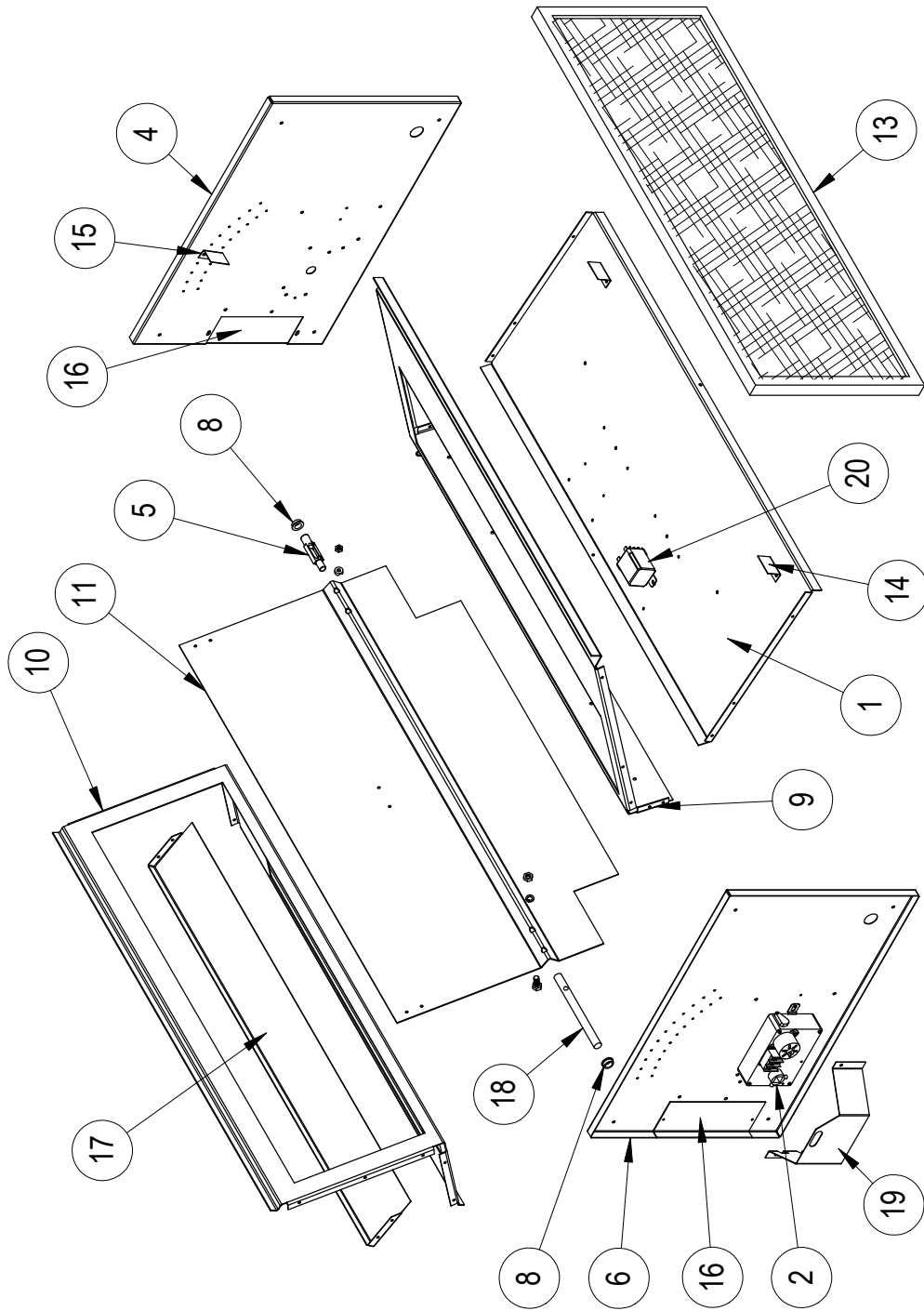
CRVS-5



FUNCTIONAL and CABINET COMPONENTS

SEXP-440

CRVP-5, CRVP-5L



FUNCTIONAL and CABINET COMPONENTS

| Drawing No. | Part No. | Description | CRVS-3 | CRVP-3 | CRVP-3L | CRVS-5 | CRVP-5 | CRVP-5L | CRVMWH-3 |
|-------------|----------|------------------------------|--------|--------|---------|--------|--------|---------|----------|
| 1 | 127-212 | Base | X | X | | | | | |
| 1 | 127-215 | Base | | | | X | X | | |
| 2 | 8602-020 | Motor | X | | | X | | | |
| 2 | 8602-050 | Motor | | X | | | X | | |
| 2 | 8602-017 | Motor | | | | | | | X |
| 3 | 8602-008 | Ball Joint | X | | | X | | | |
| 4 | S100X434 | Right End | X | X | | | | | |
| | S100X440 | Right End | | | | X | X | | |
| 5 | 8602-038 | Damper Blade Pin | 2 | X | | 2 | X | | |
| 6 | S100Y434 | Left End | X | X | | | | | |
| 6 | S100Y440 | Left End | | | | X | X | | |
| 7 | 8602-040 | BKP-24 Bracket | X | | | X | | | X |
| 8 | 8602-039 | Bronze Bushing | 2 | | | 2 | | | |
| 8 | 8602-052 | Bronze Bushing | | 2 | | | 2 | | |
| 9 | S137-178 | Front Fill | X | X | | | | | |
| 9 | S137-218 | Front Fill | | | | X | X | | |
| 10 | S137-481 | Return Fill | | | | X | X | | |
| 10 | S137-484 | Return Fill | X | X | | | | | |
| 11 | S139-180 | Damper Blade | | | | X | X | | |
| 11 | S139-181 | Damper Blade | X | X | | | | | |
| 12 | 8602-042 | Rod | X | | | X | | | |
| 13 | 7003-033 | Mist Eliminator | X | X | | | | | |
| 13 | 7003-035 | Mist Eliminator | | | | X | X | | |
| 14 | 131-095 | Filter Stop | 2 | 2 | | 2 | 2 | | |
| 15 | 105-1044 | Blade Position Angle | | 2 | | | 2 | | |
| 16 | 137-485 | Side Fill | 2 | 2 | | | | | 2 |
| 16 | 137-486 | Side Fill | | | | 2 | 2 | | |
| 17 | 137-483 | Exhaust Partition | | | | X | X | | |
| 18 | 8602-051 | Shaft | | X | | | X | | |
| 19 | 143-087 | Motor Cover Plate | | X | | | X | | |
| 20 | 8201-048 | Relay | X | X | | X | X | | |
| NS | 4056-189 | Wiring Diagram | X | | | X | | | |
| | 4056-180 | Wiring Diagram | | X | | | X | | |
| | 4056-196 | Wiring Diagram | | | X | | | X | |
| | 4056-187 | Wiring Diagram | | | | | | | X |
| NS | 8201-104 | 3 Position CRV Control Board | | | | | | | X |

NS = Not Shown