

---

# REPLACEMENT PARTS MANUAL

# COMMERCIAL ROOM VENTILATOR

MODEL: QCRV-4  
QCRV-P

---

## General Notes

- Revised and/or additional pages may be issued from time to time.
- A complete and current manual consists of pages shown in the following contents section.

## Contents

Description	Page
Functional & Cabinet Components	
♦ Exploded View .....	1
♦ Usage List .....	2

## Important

- Contact the installing and/or local Bard distributor for all parts requirements. Make sure you have the complete model and serial number available from the unit rating plates.

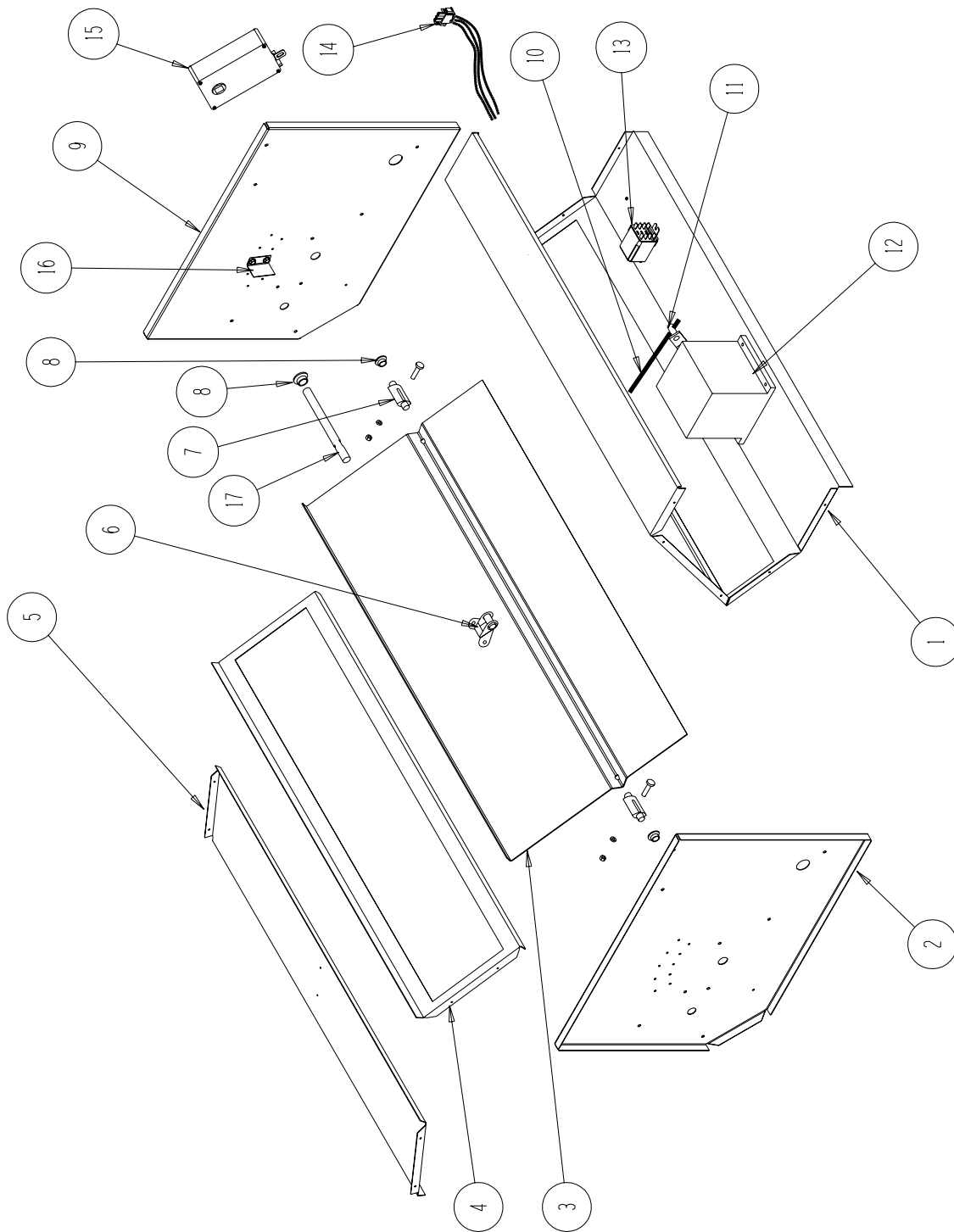


Bard Manufacturing Company, Inc.  
Bryan, Ohio 43506  
*Since 1914...Moving ahead, just as planned.*

Manual: 2110-667B  
Supersedes: 2110-667A  
File: Vol II Tab 14  
Date: 06-08-01

---

# FUNCTIONAL and CABINET COMPONENTS



SEP-203

## FUNCTIONAL and CABINET COMPONENTS

---

Drawing No.	Part No.	Description	QCRV-4	QCRV-P
1	137-370	Front Fill	X	X
2	100Y346	Left End	X	X
3	139-116	Blade	X	X
4	137-369	Rear Fill	X	X
5	127-279	Base	X	X
6	8602-040	Bracket	X	
7	8602-038	Damper Blade Pin	2	1
8	8602-039	Bushing	2	
8	8602-052	Bushing		2
9	100X346	Right End	X	X
10	8602-044	Rod	X	
11	8602-008	Ball Joint	X	
12	8602-020	Motor	X	
13	8201-048	Relay		X
14	3000-1159	Wire Assembly		X
15	8602-050	Damper Motor		X
16	131-095	Stop Angle		X
17	8602-051	Shaft		X
NS	3000-1072	Wire Assembly	X	
NS	4056-132	Wiring Diagram	X	
NS	4056-178	Wiring Diagram		X